

Statistical bulletin

# Employment in the UK: April 2020

Estimates of employment, unemployment and economic inactivity for the UK.



Contact:  
Bob Watson  
[labour.market@ons.gov.uk](mailto:labour.market@ons.gov.uk)  
+44 (0)1633 455070

Release date:  
21 April 2020

Next release:  
19 May 2020

## Notice

### 21 April 2020

The effect of the coronavirus (COVID-19) pandemic on our capacity means we have reviewed the existing labour market releases and will be suspending some publications.

This will protect the delivery and quality of our remaining labour market outputs as well as ensuring we can respond to new demands as a direct result of COVID-19. More details about the impact on labour market outputs can be found in our [statement](#).

# Table of contents

1. [Other pages in this release](#)
2. [Main points for December 2019 to February 2020](#)
3. [Employment](#)
4. [Unemployment](#)
5. [Economic inactivity](#)
6. [Employment in the UK data](#)
7. [Glossary](#)
8. [Measuring the data](#)
9. [Strengths and limitations](#)
10. [Related links](#)

# 1 . Other pages in this release

Other commentary from the latest labour market data can be found on the following pages:

- [Labour market overview](#)
- [Average weekly earnings in Great Britain](#)
- [Vacancies and jobs](#)
- [Single-month Labour Force Survey estimates](#)

## 2 . Main points for December 2019 to February 2020

- Labour Force Survey estimates presented in this bulletin cover the survey reference period ending February 2020, prior to the implementation of the coronavirus (COVID-19) social distancing measures.
- The UK employment rate was estimated at a record high of 76.6%, 0.4 percentage points higher than a year earlier and 0.2 percentage points up on the previous quarter.
- The UK unemployment rate was estimated at 4.0%, largely unchanged compared with a year earlier and 0.1 percentage point higher than the previous quarter.
- The UK economic inactivity rate was estimated at a record low of 20.2%, 0.4 percentage points lower than the previous year and 0.3 percentage points lower than the previous quarter.

The data in this bulletin come from the Labour Force Survey, a survey of households. It is not practical to survey every household each quarter, so these statistics are estimates based on a large sample.

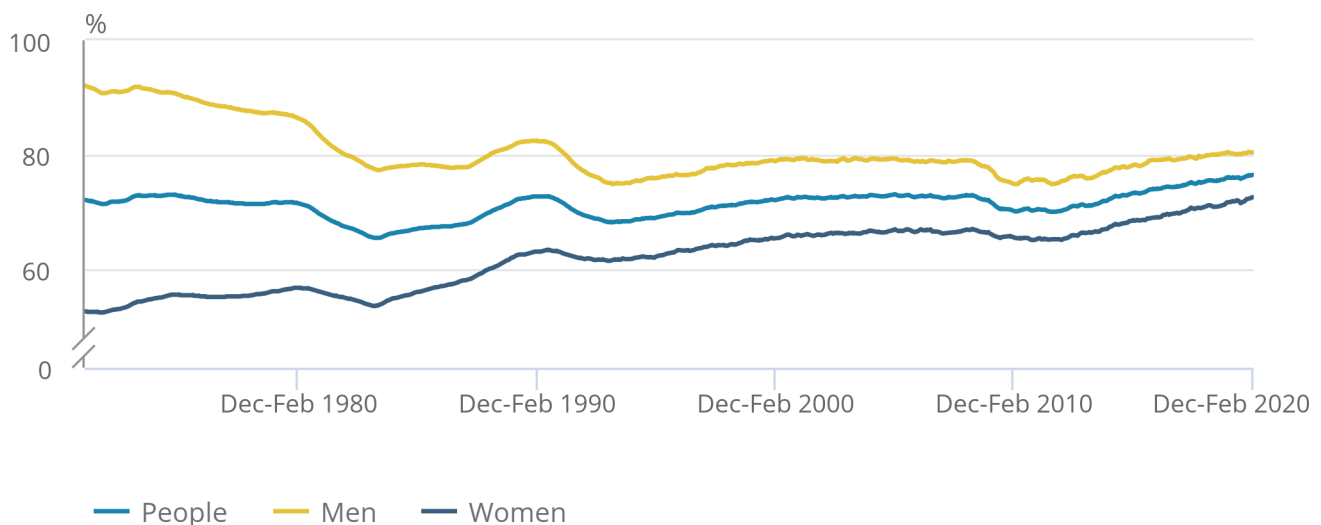
### 3 . Employment

**Figure 1: The employment rate for all people increased by 0.4 percentage points on the year to a record high of 76.6%**

UK employment rates (aged 16 to 64 years), seasonally adjusted, between January to March 1971 and December 2019 to February 2020

Figure 1: The employment rate for all people increased by 0.4 percentage points on the year to a record high of 76.6%

UK employment rates (aged 16 to 64 years), seasonally adjusted, between January to March 1971 and December 2019 to February 2020



Source: Office for National Statistics – Labour Force Survey

[Employment](#) measures the number of people aged 16 years and over in paid work. The employment rate is the proportion of people aged between 16 and 64 years who are in paid work.

Estimated employment rates for people aged between 16 and 64 years have generally been increasing since early 2012. Recent increases have largely been driven by increases in the employment rate for women (Figure 1).

For December 2019 to February 2020:

- the estimated employment rate for all people was at a record high of 76.6%; this is 0.4 percentage points up on the year and 0.2 percentage points up on the quarter
- the estimated employment rate for men was 80.5%; this is largely unchanged on the year and 0.1 percentage points up on the quarter
- the estimated employment rate for women was at a record high of 72.7%; this is 0.9 percentage points up on the year and 0.3 percentage points up on the quarter

The increase in the employment rate for women in recent years is partly a result of changes to the State Pension age for women, resulting in fewer women retiring between the ages of 60 and 65 years. However, since the equalisation of the State Pension age, the employment rate for women has continued to rise.

Estimates for December 2019 to February 2020 show a record 33.07 million people aged 16 years and over in employment, 352,000 more than a year earlier. This annual increase was mainly driven by women in employment (up by 318,000 on the year to a record high of 15.73 million), workers aged above 50 years (up by 258,000 to a record high of 10.70 million) and aged 25 to 34 years (up by 96,000 to a record high of 7.64 million), self-employed workers (up by 195,000 to 5.03 million), and full-time employees (up by 184,000 to a record high of 20.87 million). The annual increase for self-employed women (up by 140,000 to a joint record high of 1.72 million) was the largest since May to July 2014.

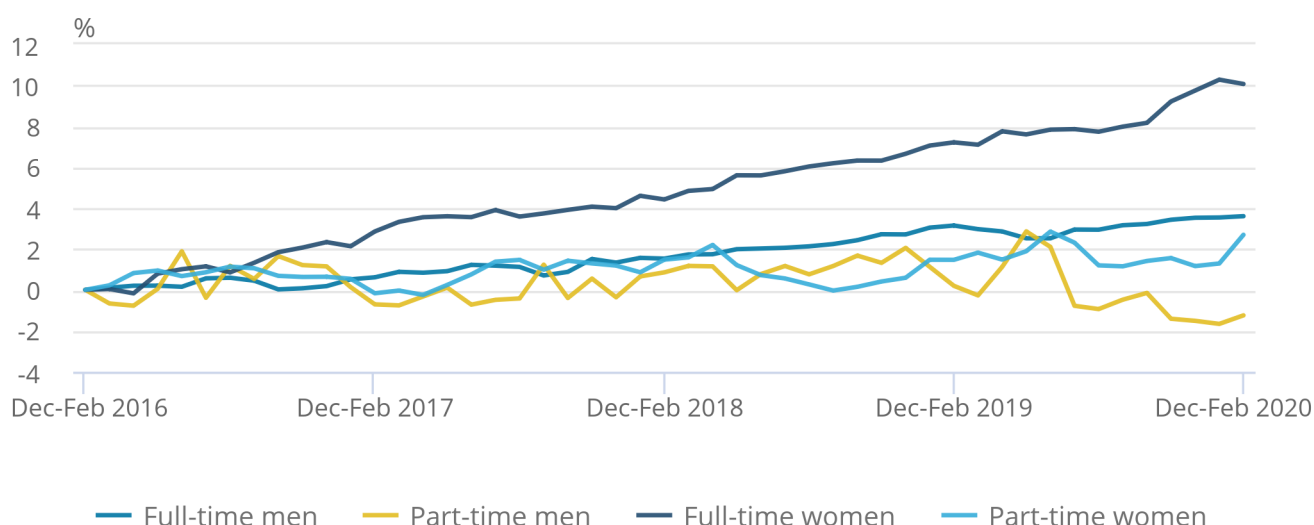
There was a 172,000 increase in employment on the quarter. This was mainly driven by women in employment (up 143,000), workers aged 18 to 24 years (up 66,000 to 3.49 million) and aged above 65 years (up 62,000 to a record high of 1.39 million), and full-time employees (up 107,000).

**Figure 2: The number of women working full-time has increased by 10.1% since December 2015 to February 2016; this is more than double the percentage increase for men**

UK employment percentage growth for full-time and part-time men and women (aged 16 years and over), seasonally adjusted, between December 2015 to February 2016 and December 2019 to February 2020

**Figure 2: The number of women working full-time has increased by 10.1% since December 2015 to February 2016; this is more than double the percentage increase for men**

UK employment percentage growth for full-time and part-time men and women (aged 16 years and over), seasonally adjusted, between December 2015 to February 2016 and December 2019 to February 2020



Source: Office for National Statistics – Labour Force Survey

Increases in the number of full-time workers have been leading the increases in employment in recent years, while the number of part-time workers has been relatively flat (Figure 2).

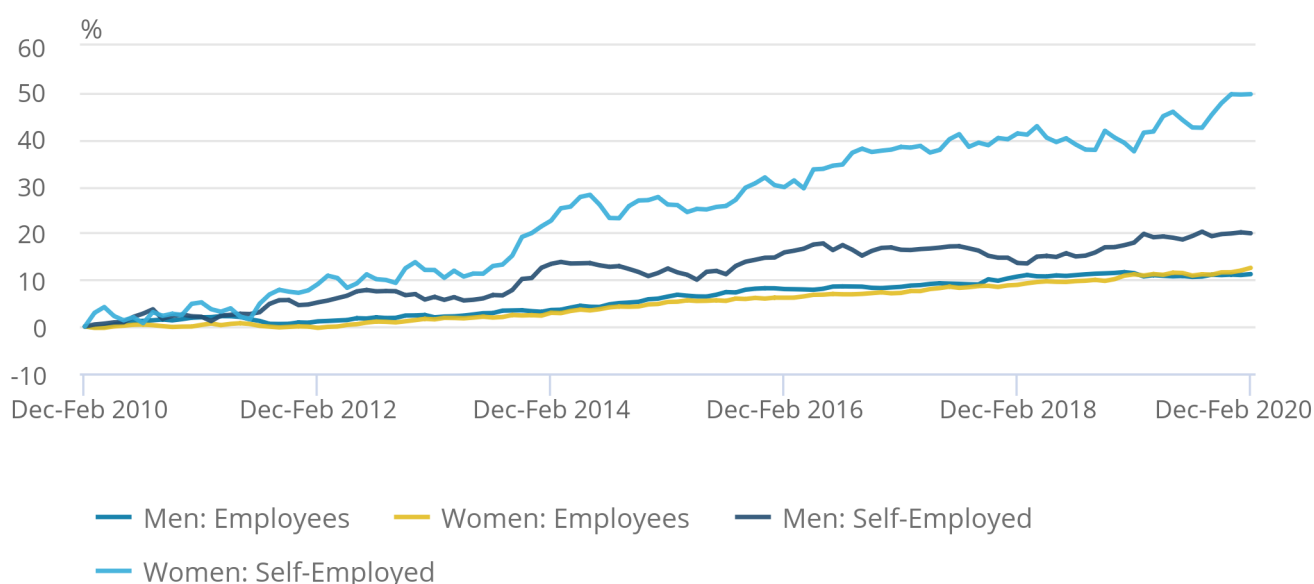
The rate of growth for women working full-time has been consistently higher than for men over the last few years, with women being the main cause of the strong increase in full-time employment. For December 2019 to February 2020, the number of women working full-time increased by 10.1% compared with the same period four years ago, while the number of men increased by 3.6% over the same period. In comparison, the number of women working part-time increased by 2.7% and the number of men working part-time decreased by 1.2%.

**Figure 3: The number of self-employed women has increased by 49.6% over the last 10 years; this is more than double the percentage increase for men**

UK percentage growth for employees and self-employed men and women (aged 16 years and over), seasonally adjusted, between December 2009 to February 2010 and December 2019 to February 2020

**Figure 3: The number of self-employed women has increased by 49.6% over the last 10 years; this is more than double the percentage increase for men**

UK percentage growth for employees and self-employed men and women (aged 16 years and over), seasonally adjusted, between December 2009 to February 2010 and December 2019 to February 2020



Source: Office for National Statistics – Labour Force Survey

Looking at the estimates for December 2019 to February 2020 by type of employment:

- there were a record 27.86 million paid employees (84.2% of all people in employment), 145,000 more than a year earlier
- there were 5.03 million self-employed people (15.2% of all people in employment), 195,000 more than a year earlier

Self-employed women only account for around 1 in 20 of all people in employment. However, they have seen the largest rate of increase over the last 10 years. Between December 2009 to February 2010 and December 2019 to February 2020, the estimated number of women in self-employment has grown by 49.6%. Over this period, the estimated number of men in self-employment has increased by 19.9%. In comparison, the rate of increase for employees has been more modest, with women increasing by 12.5% and men increasing by 11.2% (Figure 3).

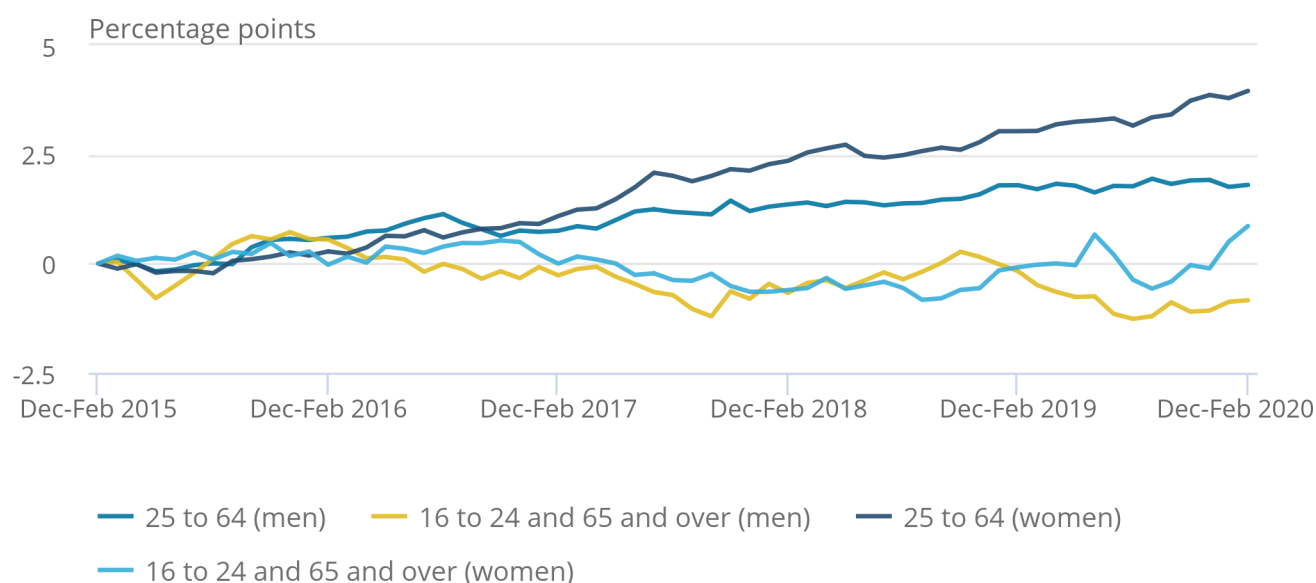
These estimates for paid employees and self-employed people make up over 99% of all people in employment in the UK. The total employment figure also includes two other minor categories, as explained in the [guide to labour market statistics](#).

#### Figure 4: Women aged 25 to 64 years have been the main cause of the increase in the employment rate over the last five years

UK employment rates change by age and sex, seasonally adjusted, between December 2014 to February 2015 and December 2019 to February 2020

#### Figure 4: Women aged 25 to 64 years have been the main cause of the increase in the employment rate over the last five years

UK employment rates change by age and sex, seasonally adjusted, between December 2014 to February 2015 and December 2019 to February 2020



Source: Office for National Statistics – Labour Force Survey

Those aged 25 to 64 years have been leading the increases in employment rates in recent years, with the largest increase seen for women. In comparison, employment rates have been relatively flat for younger and older people over the last five years. This is partly because of the different way in which full-time students interact with the labour market (Figure 4).

## Hours worked

Since estimates began in 1971, [total hours worked](#) by women have generally increased, reflecting increases in both the employment rate for women and the UK population. In contrast, total hours worked by men have been relatively stable, with the level in December 2019 to February 2020 being close to the level in January to March 1971 (623 million and 628 million hours, respectively). This is because falls in the employment rate for men, and increases in the share of part-time working, have been roughly offset by population increases.

Between December 2018 to February 2019 and December 2019 to February 2020, total actual weekly hours worked in the UK decreased by 0.1% (to 1.05 billion hours). The small change in total actual weekly hours worked over the year was because of the decrease in men's total hours worked (down 9.8 million hours) being almost matched by an increase in women's total hours worked (up 9.1 million hours).

In December 2019 to February 2020, the annual decrease in total actual weekly hours worked by men was driven by a decrease in the average actual hours worked per week by men (down by 0.6 hours compared with a year earlier, to a joint record low of 35.9 hours). On the other hand, the annual increase in total actual weekly hours worked by women was driven by an increase in the overall level of women's employment, while the average actual hours worked per week by women has remained largely unchanged over the year (at 27.3 hours).

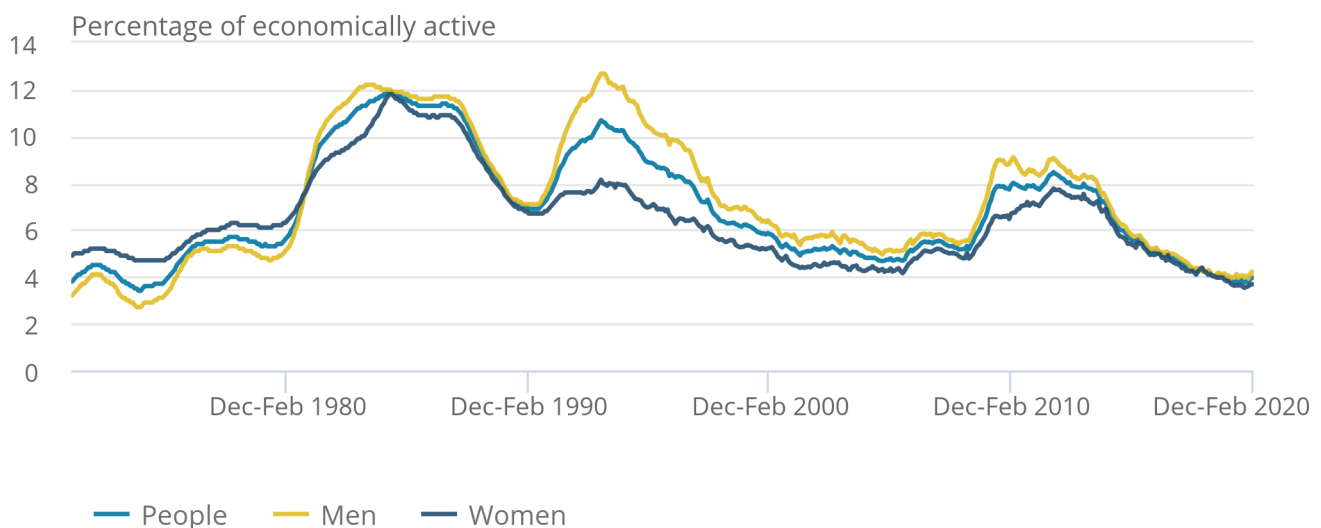
## 4 . Unemployment

**Figure 5: The unemployment rate for all people was largely unchanged on the year, at 4.0%**

UK unemployment rates (aged 16 years and over), seasonally adjusted, between January to March 1971 and December 2019 to February 2020

Figure 5: The unemployment rate for all people was largely unchanged on the year, at 4.0%

UK unemployment rates (aged 16 years and over), seasonally adjusted, between January to March 1971 and December 2019 to February 2020



Source: Office for National Statistics – Labour Force Survey

[Unemployment](#) measures people without a job who have been actively seeking work within the last four weeks and are available to start work within the next two weeks. The unemployment rate is not the proportion of the total population who are unemployed. It is the proportion of the economically active population (those in work plus those seeking and available to work) who are unemployed.

Estimated unemployment rates for both men and women aged 16 years and over have generally been falling since late 2013 but have levelled off in recent periods (Figure 5).



For December 2019 to February 2020:

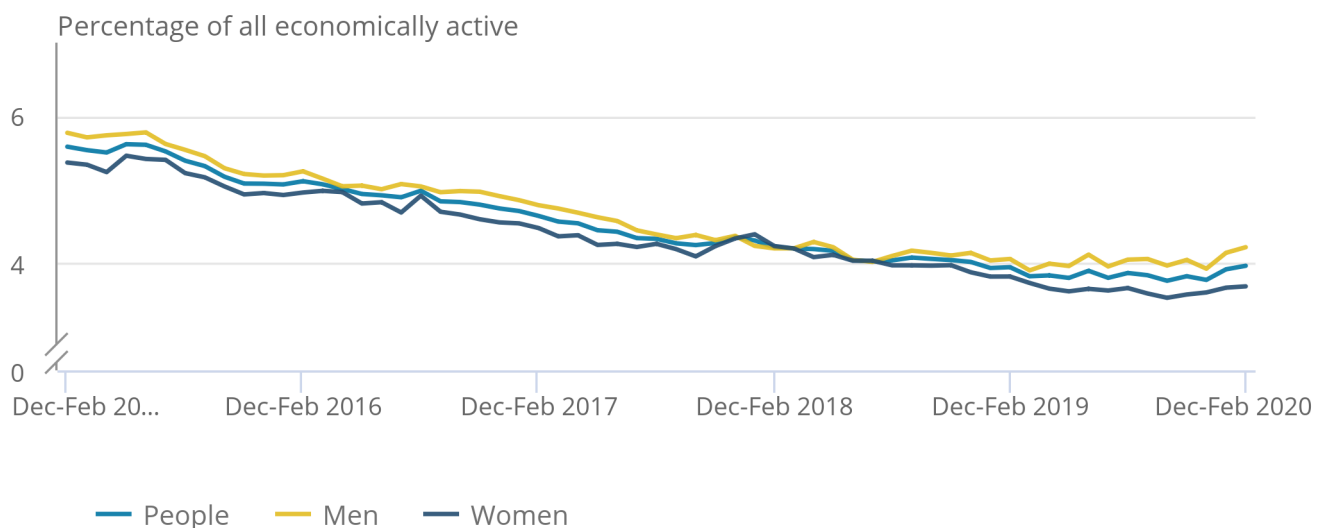
- the estimated UK unemployment rate for all people was 4.0%; this is largely unchanged compared with a year earlier and 0.1 percentage point higher than the previous quarter
- the estimated UK unemployment rate for men was 4.2%; this is 0.2 percentage points higher than a year earlier and also 0.2 percentage points higher than the previous quarter
- the estimated UK unemployment rate for women was 3.7%; this is down by 0.1 percentage point on the year but up by 0.1 percentage point on the quarter

**Figure 6: The steady fall in unemployment rates for men and women over the last few years has levelled in recent periods**

UK unemployment rates (aged 16 years and over), seasonally adjusted, between December 2014 to February 2015 and December 2019 to February 2020

**Figure 6: The steady fall in unemployment rates for men and women over the last few years has levelled in recent periods**

UK unemployment rates (aged 16 years and over), seasonally adjusted, between December 2014 to February 2015 and December 2019 to February 2020



Source: Office for National Statistics – Labour Force Survey

Between December 2014 to February 2015 and December 2019 to February 2020 (Figure 6):

- the estimated unemployment rate for all people fell from 5.6% to 4.0%
- the estimated unemployment rate for men fell from 5.8% to 4.2%
- the estimated unemployment rate for women fell from 5.4% to 3.7%

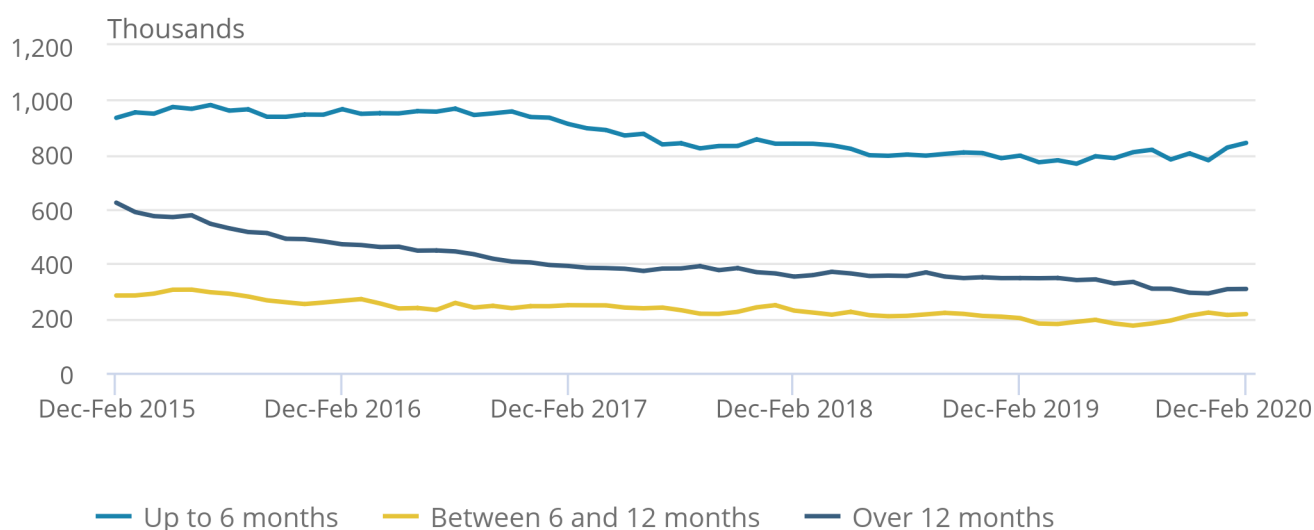
For December 2019 to February 2020, an estimated 1.36 million people were unemployed. This is 22,000 more than a year earlier but 476,000 fewer than five years earlier. The small increase on the year is the second annual increase in unemployment since May to July 2012, and it was driven by a 32,000 increase for men.

### Figure 7: Short-term unemployment has increased over the last year

Unemployment in the UK by duration (aged 16 years and over), seasonally adjusted, between December 2014 to February 2015 and December 2019 to February 2020

### Figure 7: Short-term unemployment has increased over the last year

Unemployment in the UK by duration (aged 16 years and over), seasonally adjusted, between December 2014 to February 2015 and December 2019 to February 2020



Source: Office for National Statistics – Labour Force Survey

Looking in more detail at the fall of 476,000 in unemployment over the last five years (Figure 7):

- the estimated number of people unemployed for up to six months fell by 92,000 to 842,000, but it has increased by 47,000 over the last year
- for those unemployed for over 6 months and up to 12 months, the number fell by 68,000 to 215,000, but it has been broadly flat for the last three years
- the largest fall was for long-term unemployment (those unemployed for over one year), which was down by 316,000 to 307,000

## 5 . Economic inactivity

[Economic inactivity](#) measures people without a job but who are not classed as unemployed because they have not been actively seeking work within the last four weeks and/or they are unable to start work within the next two weeks. Our headline measure of economic inactivity is for those aged between 16 and 64 years.

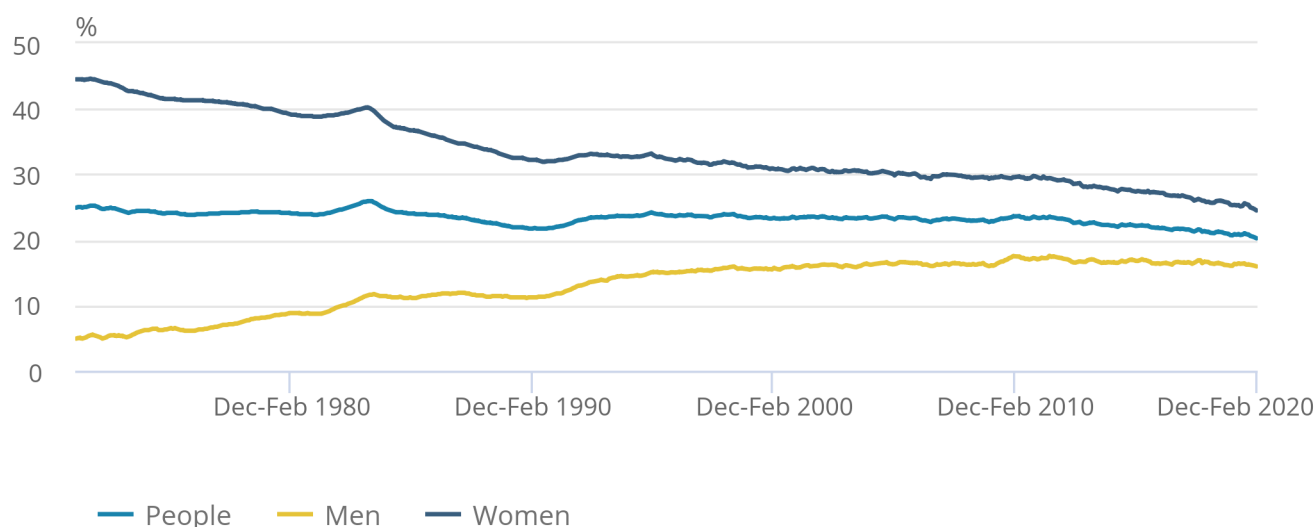
Since comparable records began in 1971, the economic inactivity rate for all people aged between 16 and 64 years has generally been falling (although it increased during recessions). This is because of a gradual fall in the economic inactivity rate for women (as seen in Figure 8). Over recent years, the economic inactivity rate for men has been relatively flat.

**Figure 8: The overall economic inactivity rate for people aged between 16 and 64 years was at a record low of 20.2%, down 0.4 percentage points on the year**

UK economic inactivity rate (all people aged 16 to 64 years), seasonally adjusted, between January to March 1971 and December 2019 to February 2020

Figure 8: The overall economic inactivity rate for people aged between 16 and 64 years was at a record low of 20.2%, down 0.4 percentage points on the year

UK economic inactivity rate (all people aged 16 to 64 years), seasonally adjusted, between January to March 1971 and December 2019 to February 2020



Source: Office for National Statistics – Labour Force Survey

For people aged between 16 and 64 years, for December 2019 to February 2020:

- the estimated economic inactivity rate for all people was a record low of 20.2%; this is down by 0.4 percentage points on the year and down by 0.3 percentage points on the quarter
- the estimated economic inactivity rate for men was 15.9%; this is down by 0.1 percentage point on the year and down by 0.2 percentage points on the quarter
- the estimated economic inactivity rate for women was a record low of 24.5%; this is down by 0.8 percentage points on the year and down by 0.4 percentage points on the quarter

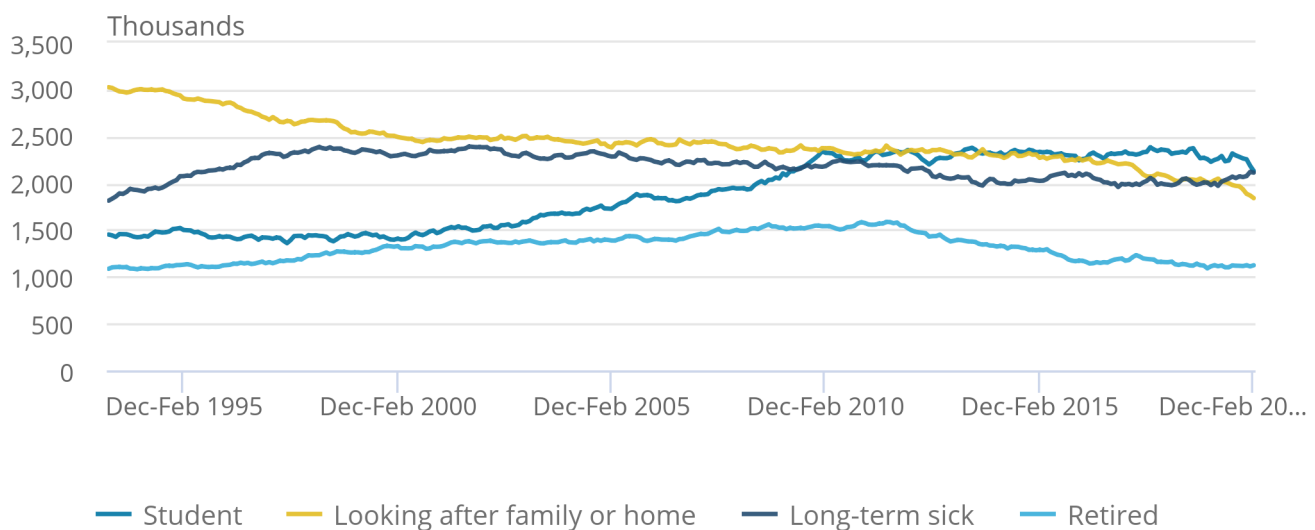
Estimates for December 2019 to February 2020 show 8.37 million people aged between 16 and 64 years not in the labour force (economically inactive). This was 166,000 fewer than a year earlier and 641,000 fewer than five years earlier. The annual decrease was mainly driven by women, with the level down by 157,000 to reach a record low of 5.09 million.

**Figure 9: The number of people who were economically inactive because they were looking after the family or home was at a record low**

Economically inactive people (aged 16 to 64 years) by reason in the UK, seasonally adjusted, between March to May 1993 and December 2019 to February 2020

Figure 9: The number of people who were economically inactive because they were looking after the family or home was at a record low

Economically inactive people (aged 16 to 64 years) by reason in the UK, seasonally adjusted, between March to May 1993 and December 2019 to February 2020



Source: Office for National Statistics – Labour Force Survey

The estimated fall of 641,000 in economic inactivity over the last five years was largely driven by women, with a decrease of 529,000. This reflects changes to the State Pension age, resulting in fewer women retiring between the ages of 60 and 65 years, as well as more women in younger age groups participating in the labour market.

Looking a little more closely at the fall, the category showing the largest decrease was people looking after the family or home (down by 430,000 to a record low of 1.84 million). When the series began in March to May 1993, looking after the family or home was the most common reason for inactivity, comprising 35.3% of the total number of economically inactive people. By December 2019 to February 2020, the share had decreased to 22.0% and it was the third most common reason, behind students (25.5%) and the long-term sick (25.2%).

## 6 . Employment in the UK data

### [Employment, unemployment and economic inactivity](#)

Dataset A05 SA | Released 21 April 2020

Estimates of UK employment, unemployment and economic inactivity broken down into age bands.

### [Full-time, part-time and temporary workers](#)

Dataset EMP01 SA | Released 21 April 2020

Estimates of UK employment including a breakdown by sex, type of employment, and full-time and part-time working.

### [Actual weekly hours worked](#)

Dataset HOUR01 SA | Released 21 April 2020

Estimates for the hours that people in employment work in the UK.

### [Unemployment by age and duration](#)

Dataset UNEM01 SA | Released 21 April 2020

Estimates of unemployment in the UK including a breakdown by sex, age group and the length of time people are unemployed.

### [Economic inactivity by reason](#)

Dataset INAC01 SA | Released 21 April 2020

Estimates of those not in the UK labour force measured by the reasons given for inactivity.

### [Labour Force Survey sampling variability](#)

Dataset A11 | Released 21 April 2020

Labour Force Survey (LFS) sampling variability (95% confidence intervals).

## 7 . Glossary

### Actual and usual hours worked

Statistics for [usual hours worked](#) measure how many hours people usually work per week. Compared with [actual hours worked](#), they are not affected by absences and so can provide a better measure of normal working patterns. For example, a person who usually works 37 hours a week but who was on holiday for a week would be recorded as working zero actual hours for that week, while usual hours would be recorded as 37 hours.

### Economic inactivity

People not in the labour force (also known as [economically inactive](#)) are not in employment but do not meet the internationally accepted definition of unemployment because they have not been seeking work within the last four weeks and/or are unable to start work in the next two weeks. The economic inactivity rate is the proportion of people aged between 16 and 64 years who are not in the labour force.

## Employment

[Employment](#) measures the number of people in paid work or who had a job that they were temporarily away from (for example, because they were on holiday or off sick). This differs from the number of jobs because some people have more than one job. The employment rate is the proportion of people aged between 16 and 64 years who are in employment. A more detailed explanation is available in our [guide to labour market statistics](#).

## Unemployment

[Unemployment](#) measures people without a job who have been actively seeking work within the last four weeks and are available to start work within the next two weeks. The unemployment rate is not the proportion of the total population who are unemployed. It is the proportion of the economically active population (that is, those in work plus those seeking and available to work) who are unemployed.

A [more detailed glossary](#) is available.

## 8 . Measuring the data

This bulletin relies on data collected from the Labour Force Survey (LFS), the largest household survey in the UK.

More quality and methodology information on strengths, limitations, appropriate uses, and how the data were created is available in the [LFS QMI](#).

The [LFS performance and quality monitoring reports](#) provide data on response rates and other quality-related issues for the LFS.

## Coronavirus (COVID-19)

In response to the developing coronavirus (COVID-19) pandemic, we are working to ensure that we continue to publish economic statistics. For more information, please see [COVID-19 and the production of statistics](#).

We have reviewed all publications and data published as part of the labour market release in response to the COVID-19 pandemic. This has led to the [postponement of some publications and datasets](#) to ensure that we can continue to publish our main labour market data. This will protect the delivery and quality of our remaining outputs as well as ensuring we can respond to new demands as a direct result of COVID-19.

Ahead of the latest labour market statistics release, David Freeman, head of labour market statistics at the Office for National Statistics (ONS), has looked at how the ONS is responding to the pressing need for new information in his blog, [Measuring the labour market during Coronavirus](#).

For more information on how labour market data sources, among others, will be affected by the COVID-19 pandemic, see the [statement](#) published on 27 March 2020.

Data in this statistical bulletin and accompanying datasets relate to LFS interviews that took place throughout the three-month reference period of December 2019 to February 2020 and are largely unaffected by recent developments.

Our latest data and analysis on the impact of COVID-19 on the UK economy and population is now available on our dedicated [COVID-19 webpage](#). This will be the hub for all special COVID-19-related publications, drawing on all available data.

## After EU withdrawal

As the UK leaves the EU, it is important that our statistics continue to be of high quality and are internationally comparable. During the transition period, those UK statistics that align with EU practice and rules will continue to do so in the same way as before 31 January 2020.

After the transition period, we will continue to produce our labour market statistics in line with the UK Statistics Authority's [Code of Practice for Statistics](#) and in accordance with International Labour Organization (ILO) definitions and agreed international statistical guidance.

## 9 . Strengths and limitations

The figures in this bulletin come from the Labour Force Survey (LFS), which gathers information from a [sample](#) of households across the UK rather than from the whole population. The sample is designed to be as accurate as possible given practical limitations such as time and cost constraints. Results from sample surveys are always estimates, not precise figures. This can have an impact on how changes in the estimates should be interpreted, especially for short-term comparisons.

As the number of people available in the sample gets smaller, the variability of the estimates that we can make from that sample size gets larger. Estimates for small groups (for example, unemployed people aged between 16 and 17 years), which are based on small subsets of the LFS sample, are less reliable and tend to be more volatile than for larger aggregated groups (for example, the total number of unemployed people).

In general, changes in the numbers (and especially the rates) reported in this bulletin between three-month periods are small and are not usually greater than the level that can be explained by sampling variability. Short-term movements in reported rates should be considered alongside longer-term patterns in the series and corresponding movements in other sources to give a fuller picture.

## Comparability

The data in this bulletin follow internationally accepted definitions specified by the [International Labour Organization \(ILO\)](#). This ensures that the estimates for the UK are comparable with those for other countries.

Further information is available in [A guide to labour market statistics](#).

Table 1: Labour Force Survey sampling variability  
Sampling variability (95% confidence intervals) of UK Labour Force Survey estimates, December 2019 to February 2020

	Level	Sampling variability of level (*)	Change on quarter	Sampling variability of change on quarter (*)	Change on year	Sampling variability of change on year (*)
Employment (000s, aged 16 and over)	33,073	± 181	172	± 152	352	± 240
Employment rate (aged 16 to 64)	76.6%	± 0.4	0.2	± 0.3	0.4	± 0.5
Average weekly hours	31.8	± 0.2	-0.2	± 0.2	-0.4	± 0.3
Unemployment (000s, aged 16 and over)	1,364	± 71	58	± 76	22	± 98
Unemployment rate (aged 16 and over)	4.0%	± 0.2	0.1	± 0.2	0.0	± 0.3
Economically active (000s, aged 16 and over)	34,437	± 173	230	± 148	374	± 231
Economic activity rate (aged 16 to 64)	79.8%	± 0.4	0.3	± 0.3	0.4	± 0.5
Economically inactive (000s, aged 16 to 64)	8,370	± 155	-136	± 133	-166	± 208
Economic inactivity rate (aged 16 to 64)	20.2%	± 0.4	-0.3	± 0.3	-0.4	± 0.5
Redundancies (000s, aged 16 and over)	107	± 19	-8	± 27	19	± 25

Source: Office for National Statistics – Labour Force Survey

#### Notes

1. The sampling variability estimates are for 95% confidence intervals and are calculated on data that are not seasonally adjusted. [Back to table](#)
2. These data are part of data table A11: Labour Force Survey sampling variability, which is part of the Labour market overview, UK release. [Back to table](#)



## 10 . Related links

### [Labour market economic commentary: April 2020](#)

Article | Released 21 April 2020

Additional economic analysis of the latest UK labour market headline statistics and long-term trends.

### [Labour market in the regions of the UK: April 2020](#)

Bulletin | Released 21 April 2020

Regional, local authority and Parliamentary constituency breakdowns of changes in UK employment, unemployment, economic inactivity and other employment-related statistics.

### [Public sector employment, UK: December 2019](#)

Bulletin | Released 17 March 2020

Quarterly estimates of the number of people employed in the public and private sectors in the UK. The public sector comprises central government, local government and public corporations.

### [Young people not in education, employment or training \(NEET\), UK: February 2020](#)

Bulletin | Released 27 February 2020

Quarterly bulletin examining estimates of men and women aged between 16 and 24 years in the UK who are not studying or in employment.

### [Working and workless households in the UK: October to December 2019](#)

Bulletin | Released 4 March 2020

Commentary on quarterly estimates of the economic status of UK households and the people living in them.

### [Improvements to the Labour Force Survey longitudinal dataset weighting methodology](#)

Methodology article | Released 21 January 2020

Information about the change that has been made and the impact this has on Labour Force Survey (LFS) flows estimates in dataset X02, released 18 February 2020.

# Index of Tables

The table below provides an index of the tables appearing in this Statistical Bulletin and it shows how these table numbers match up with the Excel spreadsheet datasets which are available on the website at:  
<https://www.ons.gov.uk/employmentandlabourmarket/peopleinwork/employmentandemployeetypes/bulletins/uklabourmarket/april2020/relateddata>

Statistical Bulletin table number	Table description	Dataset
	<b>SUMMARY</b>	
1	Labour Force Survey Summary	<a href="#">Dataset A02 SA</a>
2 (*)	Labour market status by age group	<a href="#">Dataset A05 SA</a>
	<b>EMPLOYMENT AND JOBS</b>	
3	Full-time, part-time & temporary workers	<a href="#">Dataset EMP01 SA</a>
4	Public and private sector employment	<a href="#">Dataset EMP02</a>
4(1)	Public sector employment by industry	<a href="#">Dataset EMP03</a>
5	Workforce jobs summary	<a href="#">Dataset JOBS01</a>
6 (**)	Workforce jobs by industry	<a href="#">Dataset JOBS02</a>
7	Actual weekly hours worked	<a href="#">Dataset HOUR01 SA</a>
7(1)	Usual weekly hours worked	<a href="#">Dataset HOUR02 SA</a>
	<b>NON-UK WORKERS</b>	
8	Employment by country of birth and nationality	<a href="#">Dataset EMP06</a>
8(1)	Unemployment and economic inactivity by country of birth and nationality	<a href="#">Dataset A12</a>
	<b>UNEMPLOYMENT</b>	
9	Unemployment by age and duration	<a href="#">Dataset UNEM01 SA</a>
	<b>ECONOMIC ACTIVITY AND INACTIVITY</b>	
10(*)	Economic activity by age	<a href="#">Dataset A05 SA</a>
11	Economic inactivity by reason	<a href="#">Dataset INAC01 SA</a>
12	Labour market and educational status of young people	<a href="#">Dataset A06 SA</a>
	<b>EARNINGS</b>	
13	Average Weekly Earnings (nominal) - Total pay	<a href="#">Dataset EARN01</a>
14	Average Weekly Earnings (nominal) - Bonus pay	<a href="#">Dataset EARN01</a>
15	Average Weekly Earnings (nominal) - Regular pay	<a href="#">Dataset EARN01</a>
16	Average Weekly Earnings real and nominal (summary table)	<a href="#">Dataset EARN01</a>
	<b>INTERNATIONAL SUMMARY</b>	
17	International comparisons of employment and unemployment	<a href="#">Dataset A10</a>
	<b>LABOUR DISPUTES</b>	
18	Labour disputes	<a href="#">Dataset LABD01</a>
	<b>VACANCIES</b>	
19	Vacancies by size of business	<a href="#">Dataset VACS03</a>
20	Vacancies and unemployment	<a href="#">Dataset VACS01</a>
21	Vacancies by industry	<a href="#">Dataset VACS02</a>
	<b>REDUNDANCIES</b>	
22	Redundancies levels and rates	<a href="#">Dataset RED01 SA</a>
	<b>REGIONAL SUMMARY</b>	
23	Regional labour market summary	<a href="#">Dataset A07</a>

(\*) Tables 2 and 10 in the Statistical Bulletin pdf file have been amalgamated into one spreadsheet (Dataset A05 SA).

(\*\*) Table JOBS02 provides more detail than Table 6 in the Statistical Bulletin pdf file.

The following symbols are used in the tables: p provisional, r revised, .. Not available, \* suppressed due to small sample size.  
The four-character identification codes appearing in the tables are the ONS references for the data series appearing in the Labour Market Statistics dataset which is available on the website at:  
<https://www.ons.gov.uk/employmentandlabourmarket/peopleinwork/employmentandemployeetypes/datasets/labourmarketstatistics>

# SUMMARY

## 1 Summary of headline LFS<sup>1</sup> indicators

United Kingdom (thousands)  
seasonally adjusted

		LFS household population <sup>1</sup>		Headline indicators					
				Employment		Unemployment		Inactivity	
				Level	Rate <sup>2</sup>	Level	Rate <sup>3</sup>	Level	Rate <sup>4</sup>
				All aged 16 & over	All aged 16 to 64	All aged 16 & over	All aged 16 to 64	All aged 16 & over	All aged 16 to 64
		MGSL	LF2O	MGRZ	LF24	MGSC	MGSX	LF2M	LF2S
<b>People</b>	Dec-Feb 2018	52,906	41,212	32,264	75.4	1,419	4.2	8,749	21.2
	Dec-Feb 2019	53,184	41,297	32,721	76.1	1,343	3.9	8,536	20.7
	Mar-May 2019	53,252	41,317	32,749	76.0	1,292	3.8	8,619	20.9
	Jun-Aug 2019	53,321	41,339	32,693	75.9	1,314	3.9	8,676	21.0
	Sep-Nov 2019	53,391	41,363	32,901	76.3	1,306	3.8	8,506	20.6
	<b>Dec-Feb 2020</b>	53,463	41,388	33,073	76.6	1,364	4.0	8,370	20.2
	Change on quarter	71	25	172	0.2	58	0.1	-136	-0.3
	Change %	0.1	0.1	0.5		4.4		-1.6	
	Change on year	279	90	352	0.4	22	0.0	-166	-0.4
	Change %	0.5	0.2	1.1		1.6		-1.9	
<b>Men</b>		MGSM	YBTG	MGSA	MGSV	MGSD	MGSY	YBSO	YBTM
	Dec-Feb 2018	25,874	20,487	17,090	79.8	749	4.2	3,403	16.6
	Dec-Feb 2019	26,031	20,542	17,311	80.5	731	4.1	3,290	16.0
	Mar-May 2019	26,068	20,554	17,280	80.2	712	4.0	3,368	16.4
	Jun-Aug 2019	26,107	20,567	17,256	80.2	727	4.0	3,366	16.4
	Sep-Nov 2019	26,145	20,581	17,317	80.4	729	4.0	3,326	16.2
	<b>Dec-Feb 2020</b>	26,183	20,595	17,345	80.5	763	4.2	3,281	15.9
	Change on quarter	39	14	29	0.1	34	0.2	-45	-0.2
	Change %	0.1	0.1	0.2		4.6		-1.3	
	Change on year	153	54	34	0.0	32	0.2	-9	-0.1
	Change %	0.6	0.3	0.2		4.3		-0.3	
<b>Women</b>		MGSN	LF2P	MGSB	LF25	MGSE	MGSZ	LF2N	LF2T
	Dec-Feb 2018	27,031	20,725	15,173	71.0	670	4.2	5,347	25.8
	Dec-Feb 2019	27,153	20,756	15,409	71.8	611	3.8	5,246	25.3
	Mar-May 2019	27,184	20,763	15,469	72.0	580	3.6	5,251	25.3
	Jun-Aug 2019	27,215	20,772	15,437	71.6	586	3.7	5,310	25.6
	Sep-Nov 2019	27,247	20,782	15,584	72.3	577	3.6	5,180	24.9
	<b>Dec-Feb 2020</b>	27,279	20,792	15,728	72.7	601	3.7	5,089	24.5
	Change on quarter	33	11	143	0.3	24	0.1	-91	-0.4
	Change %	0.1	0.1	0.9		4.2		-1.8	
	Change on year	126	37	318	0.9	-10	-0.1	-157	-0.8
	Change %	0.5	0.2	2.1		-1.7		-3.0	

Source: Labour Force Survey  
Labour market statistics enquiries: labour.market@ons.gov.uk

1. The Labour Force Survey (LFS) is a survey of households in the UK.
2. The headline employment rate is the number of people aged 16 to 64 in employment divided by the population aged 16 to 64.
3. The headline unemployment rate is the number of unemployed people (aged 16+) divided by the economically active population (aged 16+). The economically active population is defined as those in employment plus those who are unemployed.
4. The headline inactivity rate is the number of people aged 16 to 64 divided by the population aged 16-64.

### Note on headline employment, unemployment and inactivity rates

The headline employment and inactivity rates are based on the population aged 16 to 64 but the headline unemployment rate is based on the economically active population aged 16 and over. The employment and inactivity rates for those aged 16 and over are affected by the inclusion of the retired population in the denominators and are therefore less meaningful than the rates for those aged from 16 to 64. However, for the unemployment rate for those aged 16 and over, no such effect occurs as the denominator for the unemployment rate is the economically active population which only includes people in work or actively seeking and able to work.

### Note on headline employment, unemployment and inactivity levels

The headline employment and unemployment levels are for those aged 16 and over; they measure all people in work or actively seeking and able to work. However, the headline inactivity level is for those aged 16 to 64. The inactivity rate for those aged 16 and over is less meaningful as it includes elderly people who have retired from the labour force.

# SUMMARY

## 2(1) Labour market status by age group

United Kingdom (thousands) seasonally adjusted

		Aged 16 and over						Aged 16-64					
		Employment		Unemployment		Inactivity		Employment		Unemployment		Inactivity	
		Level	Rate	Level	Rate	Level	Rate	Level	Rate	Level	Rate	Level	Rate
		MGRZ	MGSR	MGSC	MGSX	MGSI	YBTC	LF2G	LF24	LF2I	LF2Q	LF2M	LF2S
People													
	Dec-Feb 2018	32,264	61.0	1,419	4.2	19,223	36.3	31,064	75.4	1,399	4.3	8,749	21.2
	Dec-Feb 2019	32,721	61.5	1,343	3.9	19,120	36.0	31,438	76.1	1,323	4.0	8,536	20.7
	Mar-May 2019	32,749	61.5	1,292	3.8	19,211	36.1	31,421	76.0	1,276	3.9	8,619	20.9
	Jun-Aug 2019	32,693	61.3	1,314	3.9	19,315	36.2	31,365	75.9	1,297	4.0	8,676	21.0
	Sep-Nov 2019	32,901	61.6	1,306	3.8	19,184	35.9	31,577	76.3	1,280	3.9	8,506	20.6
	Dec-Feb 2020	33,073	61.9	1,364	4.0	19,026	35.6	31,687	76.6	1,331	4.0	8,370	20.2
	Change on quarter	172	0.2	58	0.1	-159	-0.3	110	0.2	51	0.1	-136	-0.3
	Change %	0.5		4.4		-0.8		0.3		4.0		-1.6	
	Change on year	352	0.3	22	0.0	-95	-0.4	249	0.4	8	0.0	-166	-0.4
	Change %	1.1		1.6		-0.5		0.8		0.6		-1.9	
Men		MGSA	MGSS	MGSD	MGSY	MGSJ	YBTD	YBSF	MGSV	YBSI	YBTJ	YBSO	YBTM
	Dec-Feb 2018	17,090	66.1	749	4.2	8,035	31.1	16,351	79.8	733	4.3	3,403	16.6
	Dec-Feb 2019	17,311	66.5	731	4.1	7,988	30.7	16,532	80.5	719	4.2	3,290	16.0
	Mar-May 2019	17,280	66.3	712	4.0	8,076	31.0	16,482	80.2	704	4.1	3,368	16.4
	Jun-Aug 2019	17,256	66.1	727	4.0	8,123	31.1	16,485	80.2	716	4.2	3,366	16.4
	Sep-Nov 2019	17,317	66.2	729	4.0	8,099	31.0	16,543	80.4	713	4.1	3,326	16.2
	Dec-Feb 2020	17,345	66.2	763	4.2	8,075	30.8	16,575	80.5	740	4.3	3,281	15.9
	Change on quarter	29	0.0	34	0.2	-24	-0.1	32	0.1	28	0.1	-45	-0.2
	Change %	0.2		4.6		-0.3		0.2		3.9		-1.3	
	Change on year	34	-0.3	32	0.2	87	0.2	42	0.0	21	0.1	-9	-0.1
	Change %	0.2		4.3		1.1		0.3		2.9		-0.3	
Women		MGSB	MGST	MGSE	MGSZ	MGSK	YBTE	LF2H	LF25	LF2J	LF2R	LF2N	LF2T
	Dec-Feb 2018	15,173	56.1	670	4.2	11,188	41.4	14,713	71.0	666	4.3	5,347	25.8
	Dec-Feb 2019	15,409	56.8	611	3.8	11,132	41.0	14,906	71.8	603	3.9	5,246	25.3
	Mar-May 2019	15,469	56.9	580	3.6	11,135	41.0	14,940	72.0	573	3.7	5,251	25.3
	Jun-Aug 2019	15,437	56.7	586	3.7	11,192	41.1	14,881	71.6	581	3.8	5,310	25.6
	Sep-Nov 2019	15,584	57.2	577	3.6	11,085	40.7	15,034	72.3	567	3.6	5,180	24.9
	Dec-Feb 2020	15,728	57.7	601	3.7	10,951	40.1	15,113	72.7	591	3.8	5,089	24.5
	Change on quarter	143	0.5	24	0.1	-135	-0.5	78	0.3	23	0.1	-91	-0.4
	Change %	0.9		4.2		-1.2		0.5		4.1		-1.8	
	Change on year	318	0.9	-10	-0.1	-182	-0.9	206	0.9	-12	-0.1	-157	-0.8
	Change %	2.1		-1.7		-1.6		1.4		-2.1		-3.0	
		Aged 16-17						Aged 18-24					
		Employment		Unemployment		Inactivity		Employment		Unemployment		Inactivity	
		Level	Rate	Level	Rate	Level	Rate	Level	Rate	Level	Rate	Level	Rate
		YBTO	YBUA	YBVH	YBVK	YCAS	LWEX	YBTR	YBUD	YBVN	YBVQ	YCAV	LWFA
People													
	Dec-Feb 2018	344	24.4	127	27.0	936	66.5	3,474	61.8	396	10.2	1,755	31.2
	Dec-Feb 2019	332	23.8	88	21.0	972	69.8	3,528	63.6	404	10.3	1,618	29.1
	Mar-May 2019	341	24.5	83	19.6	967	69.5	3,432	62.1	410	10.7	1,687	30.5
	Jun-Aug 2019	338	24.2	86	20.3	971	69.7	3,366	61.1	408	10.8	1,734	31.5
	Sep-Nov 2019	344	24.5	94	21.4	966	68.8	3,420	62.3	388	10.2	1,680	30.6
	Dec-Feb 2020	338	23.9	105	23.8	970	68.7	3,487	63.8	408	10.5	1,574	28.8
	Change on quarter	-7	-0.6	12	2.4	4	-0.2	66	1.4	20	0.3	-106	-1.8
	Change %	-1.9		12.6		0.4		1.9		5.1		-6.3	
	Change on year	6	0.1	17	2.8	-2	-1.2	-42	0.2	4	0.2	-44	-0.4
	Change %	1.7		19.5		-0.2		-1.2		0.9		-2.7	
Men		YBTP	YBUB	YBVI	YBVL	YCAT	LWEY	YBTS	YBUE	YBVO	YBVR	YCAW	LWFB
	Dec-Feb 2018	163	22.7	61	27.0	496	68.9	1,788	62.3	229	11.3	854	29.8
	Dec-Feb 2019	161	22.6	50	23.8	502	70.3	1,813	64.0	248	12.0	773	27.3
	Mar-May 2019	156	21.8	47	23.0	511	71.6	1,750	62.0	249	12.5	824	29.2
	Jun-Aug 2019	156	21.9	50	24.2	508	71.1	1,736	61.7	246	12.4	831	29.5
	Sep-Nov 2019	153	21.2	53	25.7	514	71.4	1,758	62.7	240	12.0	805	28.7
	Dec-Feb 2020	148	20.4	62	29.4	514	71.0	1,795	64.3	240	11.8	758	27.1
	Change on quarter	-5	-0.8	9	3.8	1	-0.4	37	1.6	0	-0.2	-48	-1.6
	Change %	-3.2		16.9		0.1		2.1		0.2		-5.9	
	Change on year	-13	-2.2	11	5.6	13	0.7	-19	0.3	-8	-0.2	-16	-0.1
	Change %	-8.2		22.5		2.5		-1.0		-3.2		-2.0	
Women		YBTQ	YBUC	YBVJ	YBVM	YCAU	LWEZ	YBTT	YBUF	YBVP	YBVS	YCAC	LWFC
	Dec-Feb 2018	180	26.3	67	27.0	439	64.0	1,686	61.2	167	9.0	900	32.7
	Dec-Feb 2019	171	25.1	38	18.1	471	69.3	1,715	63.2	156	8.3	844	31.1
	Mar-May 2019	186	27.4	36	16.4	457	67.3	1,682	62.2	160	8.7	863	31.9
	Jun-Aug 2019	181	26.6	36	16.5	463	68.1	1,630	60.5	162	9.1	903	33.5
	Sep-Nov 2019	192	28.0	41	17.6	452	66.1	1,663	61.9	148	8.2	875	32.6
	Dec-Feb 2020	190	27.5	44	18.7	456	66.1	1,692	63.2	168	9.0	816	30.5
	Change on quarter	-2	-0.5	3	1.2	4	0.1	29	1.3	19	0.8	-58	-2.1
	Change %	-1.0		7.1		0.8		1.7		13.1		-6.6	
	Change on year	19	2.4	6	0.6	-15	-3.2	-23	0.1	12	0.7	-28	-0.6
	Change %	11.1		15.7		-3.2		-1.4		7.4		-3.3	

# SUMMARY

## 2(2) Labour market status by age group

United Kingdom (thousands) seasonally adjusted

		Aged 25-34						Aged 35-49					
		Employment		Unemployment		Inactivity		Employment		Unemployment		Inactivity	
		Level	Rate	Level	Rate	Level	Rate	Level	Rate	Level	Rate	Level	Rate
		YBTU	YBUG	YCGM	YCGP	YCAY	LWFD	YBTX	YBUJ	YCGS	YCGV	YCBB	LWFG
People	Dec-Feb 2018	7,436	83.5	293	3.8	1,177	13.2	10,889	85.1	309	2.8	1,601	12.5
	Dec-Feb 2019	7,543	84.3	269	3.4	1,136	12.7	10,876	85.3	292	2.6	1,579	12.4
	Mar-May 2019	7,570	84.5	248	3.2	1,139	12.7	10,882	85.5	276	2.5	1,577	12.4
	Jun-Aug 2019	7,550	84.2	272	3.5	1,140	12.7	10,866	85.4	276	2.5	1,584	12.4
	Sep-Nov 2019	7,611	85.0	267	3.4	1,080	12.1	10,906	85.7	274	2.5	1,543	12.1
	<b>Dec-Feb 2020</b>	<b>7,639</b>	<b>85.3</b>	<b>254</b>	<b>3.2</b>	<b>1,063</b>	<b>11.9</b>	<b>10,911</b>	<b>85.8</b>	<b>278</b>	<b>2.5</b>	<b>1,534</b>	<b>12.1</b>
	Change on quarter	28	0.3	-14	-0.2	-17	-0.2	4	0.0	4	0.0	-10	-0.1
	Change %	0.4		-5.1		-1.6		0.0		1.3		-0.6	
	Change on year	96	1.0	-15	-0.2	-73	-0.8	35	0.4	-14	-0.1	-46	-0.3
	Change %	1.3		-5.7		-6.4		0.3		-4.8		-2.9	
Men		YBTV	YBUH	YCGN	YCGQ	YCAZ	LWFE	YBTY	YBUK	YCGT	YCGW	YCBC	LWFH
	Dec-Feb 2018	4,009	90.0	142	3.4	303	6.8	5,736	90.8	146	2.5	435	6.9
	Dec-Feb 2019	4,050	90.2	141	3.4	299	6.7	5,738	91.2	131	2.2	425	6.7
	Mar-May 2019	4,061	90.3	139	3.3	298	6.6	5,743	91.3	127	2.2	417	6.6
	Jun-Aug 2019	4,050	90.0	144	3.4	308	6.8	5,750	91.5	128	2.2	407	6.5
	Sep-Nov 2019	4,075	90.5	141	3.3	288	6.4	5,734	91.3	135	2.3	415	6.6
	<b>Dec-Feb 2020</b>	<b>4,072</b>	<b>90.4</b>	<b>135</b>	<b>3.2</b>	<b>298</b>	<b>6.6</b>	<b>5,729</b>	<b>91.2</b>	<b>138</b>	<b>2.3</b>	<b>418</b>	<b>6.6</b>
	Change on quarter	-3	-0.1	-6	-0.1	10	0.2	-6	-0.1	3	0.0	3	0.1
	Change %	-0.1		-4.2		3.5		-0.1		1.9		0.8	
	Change on year	22	0.2	-6	-0.2	-1	0.0	-9	0.0	7	0.1	-7	-0.1
Women		YBTW	YBUI	YCGO	YCGR	YCBA	LWFF	YBTZ	YBUL	YCGU	YCGX	YCBD	LWFI
	Dec-Feb 2018	3,427	77.0	151	4.2	874	19.6	5,153	79.5	163	3.1	1,166	18.0
	Dec-Feb 2019	3,493	78.3	128	3.5	837	18.8	5,138	79.6	161	3.0	1,155	17.9
	Mar-May 2019	3,510	78.7	109	3.0	841	18.9	5,139	79.7	149	2.8	1,160	18.0
	Jun-Aug 2019	3,499	78.5	128	3.5	832	18.7	5,116	79.4	148	2.8	1,177	18.3
	Sep-Nov 2019	3,536	79.4	126	3.4	793	17.8	5,172	80.3	139	2.6	1,129	17.5
	<b>Dec-Feb 2020</b>	<b>3,567</b>	<b>80.1</b>	<b>119</b>	<b>3.2</b>	<b>765</b>	<b>17.2</b>	<b>5,182</b>	<b>80.5</b>	<b>140</b>	<b>2.6</b>	<b>1,116</b>	<b>17.3</b>
	Change on quarter	31	0.8	-8	-0.2	-27	-0.6	10	0.2	1	0.0	-13	-0.2
	Change %	0.9		-6.2		-3.5		0.2		0.8		-1.1	
	Change on year	74	1.8	-9	-0.3	-72	-1.6	44	0.9	-21	-0.4	-39	-0.6
People													
Men													
Women													

Source: Labour Force Survey

Labour market statistics enquiries: [labour.market@ons.gov.uk](mailto:labour.market@ons.gov.uk)

# EMPLOYMENT AND JOBS

## 3 Full-time, part-time and temporary workers

United Kingdom (thousands of people aged 16 and over) seasonally adjusted

All in employment						Full-time and part-time workers <sup>1</sup>							
People					Government supported training & employment programmes <sup>2</sup>					Self-employed people working full-time	Self-employed people working part-time	Total Workers with second jobs	
	Total	Employees	Self employed	Unpaid family workers		Total people working full-time	total people working part-time	Employees working full-time	Employees working part time				
	1	2	3	4	5	6	7	8	9	10	11	12	
	MGRZ	MGRN	MGRQ	MGRU	MGRW	YCBF	YCBH	YCBK	YCBN	YCBQ	YCBT	YCBW	
	Dec-Feb 2018	32,264	27,342	4,756	108	57	23,673	8,590	20,311	7,031	3,314	1,152	
	Dec-Feb 2019	32,721	27,711	4,833	134	43	24,146	8,575	20,684	7,027	3,414	1,129	
	Mar-May 2019	32,749	27,626	4,955	127	40	24,088	8,661	20,606	7,020	3,433	1,153	
	Jun-Aug 2019	32,693	27,577	4,930	129	57	24,160	8,533	20,611	6,965	3,497	1,147	
	Sep-Nov 2019	32,901	27,711	5,001	134	54	24,357	8,544	20,761	6,951	3,545	1,130	
	<b>Dec-Feb 2020</b>	33,073	27,856	5,028	129	61	24,455	8,618	20,868	6,988	3,529	1,215	
	Change on quarter	172	144	27	-6	6	98	74	107	37	-16	86	
	Change %	0.5	0.5	0.5	-4.3	11.8	0.4	0.9	0.5	-0.4	3.0	7.6	
	Change on year	352	145	195	-5	17	309	43	184	-39	115	86	
	Change %	1.1	0.5	4.0	-4.0	39.7	1.3	0.5	0.9	-0.6	3.4	7.6	
<b>Men</b>		MGSA	MGRO	MGRR	MGRU	MGRX	YCBF	YCBI	YCBL	YCBO	YCBR	YCBU	
	Dec-Feb 2018	17,090	13,878	3,137	44	31	14,816	2,274	12,205	1,673	2,584	554	
	Dec-Feb 2019	17,311	13,969	3,258	61	24	15,052	2,259	12,353	1,616	2,673	584	
	Mar-May 2019	17,280	13,897	3,294	66	23	14,961	2,319	12,279	1,618	2,656	638	
	Jun-Aug 2019	17,256	13,867	3,297	58	34	15,023	2,233	12,281	1,585	2,711	585	
	Sep-Nov 2019	17,317	13,916	3,308	64	29	15,094	2,223	12,331	1,585	2,729	579	
	<b>Dec-Feb 2020</b>	17,345	13,942	3,313	58	32	15,119	2,226	12,366	1,577	2,720	593	
	Change on quarter	29	26	5	-6	4	25	4	35	-9	-9	14	
	Change %	0.2	0.2	0.2	-9.2	12.4	0.2	0.2	0.3	-0.6	-0.3	2.4	
	Change on year	34	-26	55	-3	8	67	-33	13	-39	47	8	
	Change %	0.2	-0.2	1.7	-5.2	34.5	0.4	-1.4	0.1	-2.4	1.8	1.4	
<b>Women</b>		MGSB	MGRP	MGRS	MGRV	MGRY	YCBG	YCBJ	YCBM	YCBP	YCBS	YCBV	
	Dec-Feb 2018	15,173	13,465	1,619	63	27	8,857	6,317	8,106	5,358	730	889	
	Dec-Feb 2019	15,409	13,742	1,575	73	20	9,093	6,316	8,331	5,411	741	834	
	Mar-May 2019	15,469	13,729	1,661	61	17	9,126	6,342	8,328	5,402	777	884	
	Jun-Aug 2019	15,437	13,710	1,633	70	23	9,138	6,299	8,330	5,380	786	848	
	Sep-Nov 2019	15,584	13,795	1,693	70	26	9,263	6,321	8,430	5,365	816	877	
	<b>Dec-Feb 2020</b>	15,728	13,913	1,715	71	29	9,336	6,392	8,502	5,412	809	907	
	Change on quarter	143	118	22	0	3	72	71	72	46	-7	29	
	Change %	0.9	0.9	1.3	0.1	11.1	0.8	1.1	0.9	0.9	-0.9	3.3	
	Change on year	318	171	140	-2	9	242	76	171	0	68	72	
	Change %	2.1	1.2	8.9	-2.9	46.1	2.7	1.2	2.1	0.0	9.1	8.7	
Temporary employees (reasons for temporary working)						Part-time workers (reasons for working part-time) <sup>3</sup>							
People		Total as % of all employees	Could not find permanent job	% that could not find permanent job	Did not want permanent job	Had a contract with period of training	Some other reason		Could not find full-time job	% that could not find full-time job	Did not want full-time job	Ill or disabled	Student or at school
	Total							Total <sup>4</sup>					
	13	14	15	16	17	18	19	20	21	22	23	24	25
	YCBZ	YCCC	YCCF	YCCI	YCCL	YCCO	YCCR	YCCU	YCCX	YCDA	YCDD	YCDG	YCDJ
	Dec-Feb 2018	1,559	5.7	452	29.0	432	157	518	8,474	1,014	12.0	6,037	249
	Dec-Feb 2019	1,545	5.6	408	26.4	453	136	548	8,446	950	11.2	6,094	262
	Mar-May 2019	1,467	5.3	366	24.9	462	130	510	8,542	931	10.9	6,188	280
	Jun-Aug 2019	1,398	5.1	335	24.0	366	135	562	8,399	869	10.3	6,108	276
	Sep-Nov 2019	1,459	5.3	373	25.5	393	120	574	8,407	907	10.8	6,078	283
	<b>Dec-Feb 2020</b>	1,476	5.3	382	25.9	421	117	555	8,487	889	10.5	6,126	302
	Change on quarter	17	0.0	10	0.4	29	-3	-19	80	-18	-0.3	48	19
	Change %	1.2		2.6		7.3	-2.5	-3.3	1.0	-2.0		0.8	6.6
	Change on year	-70	-0.3	-26	-0.5	-32	-19	7	41	-60	-0.8	31	40
	Change %	-4.5		-6.3		-7.0	-14.1	1.2	0.5	-6.4		0.5	15.1
<b>Men</b>		YCCA	YCCD	YCCG	YCCJ	YCCM	YCCP	YCCS	YCCV	YCCY	YCDB	YCDE	YCDH
	Dec-Feb 2018	745	5.4	235	31.5	189	79	242	2,227	467	21.0	1,184	80
	Dec-Feb 2019	707	5.1	216	30.5	181	71	239	2,200	414	18.8	1,229	95
	Mar-May 2019	664	4.8	187	28.2	193	60	224	2,256	404	17.9	1,296	94
	Jun-Aug 2019	638	4.6	167	26.2	149	64	258	2,171	375	17.3	1,262	91
	Sep-Nov 2019	699	5.0	197	28.2	172	69	262	2,164	374	17.3	1,245	97
	<b>Dec-Feb 2020</b>	672	4.8	180	26.8	193	58	242	2,169	358	16.5	1,252	102
	Change on quarter	-27	-0.2	-17	-1.4	21	-11	-20	5	-16	-0.8	7	5
	Change %	-3.9		-8.7		12.4	-15.9	-7.7	0.2	-4.3		0.6	5.1
	Change on year	-34	-0.2	-36	-3.8	12	-13	3	-31	-55	-2.3	23	7
	Change %	-4.8		-16.6		6.4	-18.2	1.2	-1.4	-13.4		1.9	7.2
<b>Women</b>		YCCB	YCCE	YCHH	YCKK	YCCN	YCCQ	YCCT	YCCW	YCCZ	YCDC	YCDF	YCDI
	Dec-Feb 2018	814	6.0	217	26.6	243	78	276	6,247	547	8.7	4,853	169
	Dec-Feb 2019	839	6.1	193	23.0	272	65	309	6,246	536	8.6	4,866	168
	Mar-May 2019	802	5.8	178	22.2	269	70	285	6,286	526	8.4	4,893	186
	Jun-Aug 2019	760	5.5	168	22.1	217	71	304	6,228	494	7.9	4,846	186
	Sep-Nov 2019	759	5.5	176	23.1	221	51	312	6,243	533	8.5	4,833	187
	<b>Dec-Feb 2020</b>	803	5.8	203	25.2	228	59	313	6,318	531	8.4	4,874	200
	Change on quarter	44	0.3	27	2.1	7	8	2	76	-2	-0.1	41	14
	Change %	5.8		15.4		3.4	15.4	0.5	1.2	-0.4		0.8	7.3
	Change on year	-36	-0.3	10	2.3	-43	-6	4	72	-5	-0.2	8	33
	Change %	-4.2		5.2		-15.9	-9.6	1.3	1.2	-0.9		0.2	19.6

Relationship between columns: 1= 2+3+4+5; 1=6+7; 2=8+9; 3=10+11; 13=15+17+18+19; 20=9+11; 14=13/2; 16=15/13; 22=21/20

1. The split between full-time and part-time employment is based on respondents' self-classification.

2. This series does not include all people on these programmes; it only includes those engaging in any form of work, work experience or work-related training.

3. These series cover Employees and Self-employed only. These series include some temporary employees recorded in columns 13 to 19.

4. The total includes those who did not give a reason for working part-time and it therefore does not equal the sum of columns 21, 23, 24 and 25.

Source: Labour Force Survey

Labour market statistics enquiries: labour.market@ons.gov.uk

# EMPLOYMENT AND JOBS

## 7 Actual weekly hours worked

United Kingdom (hours worked by people aged 16 and over), seasonally adjusted

	Total weekly hours (millions) <sup>12</sup>	Average (mean) actual weekly hours worked			
		All workers <sup>1</sup>	Full-time workers <sup>3</sup>	Part-time workers <sup>3</sup>	Second Jobs
People	YBUS	YBUV	YBUY	YBVB	YBVE
Dec-Feb 2018	1,031.7	32.0	37.2	16.3	9.9
Dec-Feb 2019	1,052.9	32.2	37.4	16.3	9.7
Mar-May 2019	1,052.4	32.1	37.4	16.3	9.6
Jun-Aug 2019	1,049.2	32.1	37.3	16.3	10.1
Sep-Nov 2019	1,054.1	32.0	37.1	16.3	9.5
<b>Dec-Feb 2020</b>	1,052.2	31.8	36.9	16.2	9.7
Change on quarter	-1.9	-0.2	-0.3	-0.2	0.3
Change %	-0.2	-0.7	-0.7	-1.1	3.0
Change on year	-0.7	-0.4	-0.6	-0.1	0.1
Change %	-0.1	-1.1	-1.5	-0.8	0.6
Men	YBUT	YBUW	YBUZ	YBVC	YBVF
Dec-Feb 2018	621.9	36.4	39.1	16.2	10.9
Dec-Feb 2019	632.3	36.5	39.2	16.4	10.5
Mar-May 2019	626.3	36.2	39.0	16.2	10.7
Jun-Aug 2019	626.5	36.3	39.0	16.3	10.7
Sep-Nov 2019	626.4	36.2	38.8	16.2	10.3
<b>Dec-Feb 2020</b>	622.5	35.9	38.5	15.9	10.7
Change on quarter	-3.9	-0.3	-0.3	-0.4	0.3
Change %	-0.6	-0.8	-0.9	-2.4	3.1
Change on year	-9.8	-0.6	-0.8	-0.5	0.1
Change %	-1.5	-1.7	-2.0	-3.1	1.0
Women	YBUU	YBUX	YBVA	YBVD	YBVG
Dec-Feb 2018	409.8	27.0	33.9	16.3	9.1
Dec-Feb 2019	420.6	27.3	34.3	16.3	9.1
Mar-May 2019	426.1	27.5	34.7	16.4	8.8
Jun-Aug 2019	422.7	27.4	34.5	16.3	9.6
Sep-Nov 2019	427.7	27.4	34.4	16.4	8.8
<b>Dec-Feb 2020</b>	429.7	27.3	34.2	16.3	9.0
Change on quarter	2.0	-0.1	-0.2	-0.1	0.2
Change %	0.5	-0.5	-0.4	-0.7	2.3
Change on year	9.1	0.0	-0.1	0.0	0.0
Change %	2.2	0.1	-0.4	0.0	-0.1

Source: Labour Force Survey

Labour market statistics enquiries: labour.market@ons.gsi.gov.uk

1 Main and second job

2 Total actual weekly hours worked including paid and unpaid overtime.

3 Main job only. The split between full-time and part-time employment is based on respondents' self-classification.

## 7 (1) Usual weekly hours of work<sup>1</sup>

United Kingdom, seasonally adjusted

	All in Employment (%)			Employees (%)			Self-Employed (%)		
	People	Men	Women	People	Men	Women	People	Men	Women
<b>Dec-Feb 2019</b>									
Less than 6 Hours	1.4	0.9	1.9	0.9	0.6	1.3	3.2	1.8	6.1
6 up to 15 hours	6.3	3.3	9.5	5.6	2.8	8.5	8.9	4.7	17.6
16 up to 30 hours	20.1	10.4	30.9	19.6	8.9	30.5	23.2	16.8	36.5
31 up to 45 hours	53.9	59.6	47.6	56.7	63.0	50.3	38.8	45.5	24.8
Over 45 hours	18.3	25.8	10.0	17.1	24.7	9.5	25.9	31.2	15.0
Total (thousands)	32,721	17,311	15,409	27,711	13,969	13,742	4,833	3,258	1,575
<b>Sep-Nov 2019</b>									
Less than 6 Hours	1.5	0.9	2.0	1.0	0.7	1.4	3.1	1.7	5.7
6 up to 15 hours	6.3	3.5	9.5	5.7	3.1	8.4	9.1	4.7	17.5
16 up to 30 hours	19.3	9.8	29.9	18.8	8.4	29.3	22.5	15.6	35.9
31 up to 45 hours	54.6	60.4	48.1	57.3	63.7	50.9	39.9	46.7	26.6
Over 45 hours	18.3	25.4	10.4	17.1	24.1	10.0	25.5	31.2	14.4
Total (thousands)	32,901	17,317	15,584	27,711	13,916	13,795	5,001	3,308	1,693
<b>Dec-Feb 2020</b>									
Less than 6 Hours	1.5	1.0	2.0	1.1	0.7	1.4	3.5	2.3	5.8
6 up to 15 hours	6.4	3.4	9.7	5.8	3.0	8.6	8.7	4.0	17.8
16 up to 30 hours	19.0	9.6	29.4	18.5	8.2	28.8	22.3	15.6	35.3
31 up to 45 hours	54.9	61.1	48.1	57.7	64.6	50.8	39.7	46.5	26.5
Over 45 hours	18.1	24.9	10.7	16.9	23.5	10.3	25.8	31.6	14.5
Total (thousands)	33,073	17,345	15,728	27,856	13,942	13,913	5,028	3,313	1,715

1 Total usual weekly hours worked by people aged 16 and over in main job including paid and unpaid overtime.

Source: Labour Force Survey

Labour market statistics enquiries: labour.market@ons.gsi.gov.uk

NON-UK WORKERS

8(1) Employment levels and rates by country of birth and nationality

(First published on 18 February 2020)

United Kingdom (thousands of people aged 16 and over) not seasonally adjusted																				
Country of birth	Europe										Africa		Asia			America and Oceania				
	European Union (EU)										Other Europe (not in EU)	Total Africa	Of which: South Africa	Total Asia	Of which: India	Of which: Pakistan and Bangladesh	Total America and Oceania	Of which: USA	Of which: Australia and New Zealand	Total Non-EU <sup>7</sup>
	Total <sup>1</sup>	UK	Non UK	Total Europe	Total EU (EU27) <sup>2</sup>	EU14 <sup>3</sup>	EU8 <sup>4</sup>	EU2 <sup>5</sup>	Other EU <sup>6</sup>											
Levels (aged 16 and over)																				
Country of birth	MGTM	JF6F	JF6G	FSC2	EQ4Q	JJR3	JJR5	EQ4R	FSC3	FSC4	FSC5	JJS3	FSC6	JJS7	JJS9	FSC7	JJR7	JJS5	EQ4S	
Oct - Dec 2017	32,230	26,659	5,568	2,617	2,378	995	992	357	34	239	869	171	1,492	465	352	591	99	145	3,190	
Oct - Dec 2018	32,671	27,011	5,651	2,550	2,303	989	886	384	43	248	893	174	1,568	476	344	640	107	130	3,349	
Jan - Mar 2019	32,641	26,838	5,796	2,666	2,420	994	947	438	41	246	933	200	1,536	452	366	662	108	139	3,376	
Apr - Jun 2019	32,752	26,967	5,777	2,692	2,438	1,019	971	407	41	254	923	198	1,504	475	387	658	105	167	3,339	
Jul - Sep 2019	32,802	27,028	5,770	2,630	2,368	1,020	953	356	40	261	962	176	1,532	483	373	646	93	166	3,401	
Oct - Dec 2019	32,983	27,171	5,809	2,704	2,436	1,026	970	400	40	269	937	171	1,544	490	373	624	95	169	3,373	
Change on year	313	160	158	154	133	37	84	16	-3	21	44	-2	-24	13	30	-16	-13	39	25	
Change %	1.0	0.6	2.8	6.1	5.8	3.7	9.4	4.2	-8.1	8.6	4.9	-1.4	-1.5	2.8	8.7	-2.5	-11.7	29.9	0.7	
Nationality																				
Nationality	MGTM	JF6H	JF6I	FSC8	EQ4U	JJR4	JJR6	EQ4V	FSC9	FSCE	FSD2	JJS4	FSD3	JJS8	JJT2	FSD4	JJR8	JJS6	EQ4W	
Oct - Dec 2017	32,230	28,726	3,500	2,430	2,335	1,007	959	361	9	95	266	63	508	177	86	296	91	89	1,165	
Oct - Dec 2018	32,671	29,098	3,569	2,400	2,274	1,011	869	370	24	126	277	64	593	194	107	299	96	71	1,295	
Jan - Mar 2019	32,641	28,943	3,698	2,513	2,381	1,018	925	423	16	132	273	71	597	182	115	315	101	75	1,317	
Apr - Jun 2019	32,752	29,084	3,661	2,490	2,368	1,019	952	375	22	122	289	63	567	187	121	314	78	95	1,292	
Jul - Sep 2019	32,802	29,209	3,589	2,367	2,238	981	903	333	21	129	297	56	599	210	126	326	68	107	1,351	
Oct - Dec 2019	32,983	29,325	3,654	2,439	2,310	994	931	367	17	129	298	68	602	199	126	316	75	107	1,344	
Change on year	313	227	85	39	36	-16	62	-2	-8	3	20	4	9	5	19	17	-21	36	49	
Change %	1.0	0.8	2.4	1.6	1.6	-1.6	7.2	-0.6	-31.4	2.4	7.3	6.7	1.6	2.5	18.0	5.6	-21.8	51.1	3.8	
Rates (aged 16 to 64)																				
Country of birth	LF9D	LFM6	LFM7	FSD5	EQ4Y	LFM8	LFM9	EQ4Z	FSD6	FSD7	FSD8	LFN4	FSD9	LFN6	LFN7	FSE2	LFN2	LFN5	EQ52	
Oct - Dec 2017	75.3	75.8	73.5	80.5	81.6	77.6	85.4	83.6	72.9	70.9	70.9	82.1	63.7	73.5	56.2	78.6	77.3	86.3	68.5	
Oct - Dec 2018	76.0	76.3	74.7	81.6	82.6	79.8	86.1	83.5	71.8	73.0	73.3	84.7	65.5	75.5	55.9	77.6	79.1	85.7	70.1	
Jan - Mar 2019	75.9	76.3	74.6	81.8	82.8	80.1	85.1	84.6	79.1	72.7	73.1	88.2	64.6	75.3	57.6	77.8	78.4	84.7	69.7	
Apr - Jun 2019	76.0	76.3	74.6	82.2	83.1	80.2	85.2	86.2	78.3	74.4	73.2	87.4	63.4	75.5	59.0	78.6	73.9	87.7	69.3	
Jul - Sep 2019	76.2	76.3	75.6	82.5	83.3	80.6	86.1	84.6	76.0	76.1	74.9	84.9	65.4	77.0	57.9	79.2	78.2	88.8	71.0	
Oct - Dec 2019	76.6	76.8	75.6	82.0	83.1	80.9	85.7	82.7	78.0	73.5	74.2	82.3	65.7	78.7	56.7	80.2	79.1	87.8	70.9	
Change on year	0.6	0.5	0.9	0.4	0.5	1.2	-0.4	-0.8	6.1	0.5	0.9	-2.5	0.2	3.2	0.7	2.6	0.0	2.1	0.8	
Nationality																				
Nationality	LF9D	LFN8	LFN9	FSE3	EQ54	LFO2	LFO3	EQ55	FSE4	FSE5	FSE6	LFO6	FSE7	LFO8	LFO9	FSE8	LFO4	LFO7	EQ56	
Oct - Dec 2017	75.3	75.5	74.2	80.3	81.1	77.3	85.3	84.1	38.0	64.7	65.3	84.8	56.1	67.3	52.7	78.2	79.5	84.5	63.3	
Oct - Dec 2018	76.0	76.0	75.8	82.6	83.3	81.0	86.0	84.5	68.9	72.3	70.5	86.6	58.3	69.7	48.4	77.0	73.7	86.1	65.6	
Jan - Mar 2019	75.9	76.1	75.3	82.1	82.7	79.9	85.0	84.9	75.0	72.9	68.8	91.4	57.2	70.6	50.9	76.9	78.3	82.7	64.8	
Apr - Jun 2019	76.0	76.1	75.0	82.5	83.3	80.8	85.0	85.9	83.7	69.5	70.7	90.2	54.3	69.3	53.8	76.8	73.1	86.3	63.4	
Jul - Sep 2019	76.2	76.2	76.2	82.5	82.8	80.3	85.5	83.5	83.7	76.3	71.8	87.1	59.4	73.1	55.4	78.1	74.2	92.0	67.2	
Oct - Dec 2019	76.6	76.7	76.0	81.9	82.4	80.3	85.4	81.0	80.0	73.4	69.0	85.8	60.3	74.6	55.2	78.5	77.2	87.8	66.9	
Change on year	0.6	0.7	0.1	-0.7	-0.8	-0.6	-0.6	-3.6	11.1	1.1	-1.5	-0.9	2.0	4.9	6.8	1.6	3.5	1.7	1.3	
Source: Labour Force Survey																				
Labour market statistics enquiries: labour.market@ons.gov.uk																				

Source: Labour Force Survey

Labour market statistics enquiries: [labour.market@ons.gov.uk](mailto:labour.market@ons.gov.uk)

1. The total series includes people who do not state their country of birth or nationality. The total levels series MGTM does not therefore equal the sum of the "UK" and "Non-UK" series.

2. This series consists of all 27 EU member states excluding the UK. This series equals the sum of EU14, EU8, EU2 and Other EU.

3. Austria, Belgium, Denmark, Finland, France, Germany, Greece, Ireland, Italy, Luxembourg, Netherlands, Portugal, Spain and Sweden.

4. Czech Republic, Estonia, Hungary, Latvia, Lithuania, Poland, Slovak Republic and Slovenia.

5. Romania and Bulgaria.

6. Cyprus, Malta and Croatia.

7. Total Non-EU equals the sum of Other Europe, Total Africa, Total Asia and Total America and Oceania, and excludes the UK.

The estimates shown in this table relate to the number of people in employment and should not be used as a proxy for flows of foreign migrants into the UK.



NON-UK WORKERS

8(2) Unemployment and economic inactivity levels and rates by country of birth and nationality

United Kingdom (thousands of people) not seasonally adjusted

(first published on 18 February 2020)

Unemployment (all aged 16 and over)						Economically inactive (all aged from 16 to 64)									
	Total <sup>1</sup>	UK	Non-UK	EU27 <sup>2</sup>	Non-EU <sup>3</sup>	Total <sup>1</sup>		UK		Non-UK		EU27 <sup>2</sup>		Non-EU <sup>3</sup>	
						All econom- ically inactive	Of which: Students <sup>4</sup>	All econom- ically inactive	Of which: Students <sup>4</sup>	All econom- ically inactive	Of which: Students <sup>4</sup>	All econom- ically inactive	Of which: Students <sup>4</sup>	All econom- ically inactive	Of which: Students <sup>4</sup>
Levels (thousands of people)															
By country of birth	MGTP	DSWD	DT35	DT3F	DTKB	LF9L	LF9W	DTLK	DYUP	DYUR	DYVR	DYVZ	DYWL	DYWR	DZ37
Oct - Dec 2017	1,425	1,142	283	78	205	8,751	2,318	7,055	1,807	1,685	511	450	174	1,234	337
Oct - Dec 2018	1,328	1,068	260	78	182	8,598	2,228	6,957	1,757	1,623	470	399	161	1,224	309
Jan - Mar 2019	1,292	1,013	279	84	195	8,663	2,373	6,992	1,851	1,654	521	409	159	1,245	362
Apr - Jun 2019	1,296	1,015	280	74	206	8,659	2,350	7,006	1,864	1,640	485	414	159	1,226	327
Jul - Sep 2019	1,374	1,115	259	72	187	8,503	2,089	6,933	1,687	1,556	401	395	125	1,161	276
Oct - Dec 2019	1,268	1,030	237	85	152	8,450	2,223	6,844	1,769	1,596	455	403	130	1,193	325
Change on year	-60	-37	-23	7	-29	-148	-5	-113	11	-28	-15	4	-31	-31	16
Change %	-4.5	-3.5	-8.7	8.7	-16.2	-1.7	-0.2	-1.6	0.6	-1.7	-3.2	0.9	-19.5	-2.5	5.3
By nationality	MGTP	DSWE	DT39	DTG9	DTKC	LF9L	LF9W	DYTC	DYUQ	DYUS	DYVU	DYWA	DYWM	DYWS	DZGD
Oct - Dec 2017	1,425	1,240	184	90	94	8,751	2,318	7,716	1,946	1,021	371	447	182	574	189
Oct - Dec 2018	1,328	1,154	173	76	97	8,598	2,228	7,630	1,892	954	335	377	165	577	170
Jan - Mar 2019	1,292	1,107	185	86	99	8,663	2,373	7,631	1,982	1,018	390	409	166	609	223
Apr - Jun 2019	1,296	1,110	186	71	114	8,659	2,350	7,621	1,981	1,023	366	399	162	624	204
Jul - Sep 2019	1,374	1,206	168	76	92	8,503	2,089	7,546	1,801	940	287	382	125	558	162
Oct - Dec 2019	1,268	1,102	165	87	79	8,450	2,223	7,456	1,900	976	323	398	143	578	180
Change on year	-60	-52	-8	11	-19	-148	-5	-174	7	22	-12	21	-21	1	9
Change %	-4.5	-4.5	-4.7	14.0	-19.3	-1.7	-0.2	-2.3	0.4	2.3	-3.6	5.7	-13.0	0.2	5.5
Rates (%)															
By country of birth	MGUK	DT2W	DT3B	DTJG	DTKD	CRZK		DYTD		DYUT		DYWD		DYWT	
Oct - Dec 2017	4.2	4.1	4.8	3.2	6.0	21.2		20.9		22.7		15.7		27.1	
Oct - Dec 2018	3.9	3.8	4.4	3.3	5.1	20.8		20.6		21.9		14.6		26.1	
Jan - Mar 2019	3.8	3.6	4.6	3.4	5.5	21.0		20.8		21.8		14.3		26.3	
Apr - Jun 2019	3.8	3.6	4.6	2.9	5.8	21.0		20.8		21.7		14.4		26.3	
Jul - Sep 2019	4.0	4.0	4.3	3.0	5.2	20.6		20.5		20.9		14.1		25.0	
Oct - Dec 2019	3.7	3.7	3.9	3.4	4.3	20.4		20.2		21.3		14.0		25.9	
Change on year	-0.2	-0.1	-0.5	0.1	-0.8	-0.4		-0.4		-0.6		-0.6		-0.3	
By nationality	MGUK	DT2Z	DT3D	DTKA	DTLH	CRZK		DYUO		DYUU		DYWE		DZ36	
Oct - Dec 2017	4.2	4.1	5.0	3.7	7.5	21.2		21.1		21.9		15.7		31.6	
Oct - Dec 2018	3.9	3.8	4.6	3.2	7.0	20.8		20.8		20.5		14.0		29.5	
Jan - Mar 2019	3.8	3.7	4.8	3.5	7.0	21.0		20.9		21.0		14.4		30.3	
Apr - Jun 2019	3.8	3.7	4.8	2.9	8.1	21.0		20.9		21.2		14.2		31.0	
Jul - Sep 2019	4.0	4.0	4.5	3.3	6.4	20.6		20.6		20.2		14.4		28.1	
Oct - Dec 2019	3.7	3.6	4.3	3.6	5.5	20.4		20.4		20.6		14.4		29.1	
Change on year	-0.2	-0.2	-0.3	0.4	-1.5	-0.4		-0.5		0.1		0.5		-0.4	

Source: Labour Force Survey

Labour market statistics enquiries: labour.market@ons.gov.uk

1. The total series includes people who do not state their country of birth or nationality. The total levels series therefore do not equal the sum of the "UK" and "Non-UK" series.

2. This series consists of all 27 EU member states excluding the UK.

3. This series consists of all countries outside the EU excluding the UK.

4. This series consists of those people whose main reason for being economically inactive was because they were students. It does not include all students as some students will be included in the employment and unemployment estimates.

UNEMPLOYMENT  
9(1) Unemployment by age and duration

United Kingdom (thousands) seasonally adjusted

		All aged 16 & over							All aged 16 - 64						
		All	Rate(%) <sup>1</sup>	Up to 6 months	Over 6 and up to 12 months	All over 12 months	% over 12 months	All over 24 months	All	Rate(%) <sup>1</sup>	Up to 6 months	Over 6 and up to 12 months	All over 12 months	% over 12 months	All over 24 months
		1	2	3	4	5	6	7	8	9	10	11	12	13	14
People		MGSC	MGSX	YBWF	YBWG	YBWH	YBWI	YBWL	LF2I	LF2Q	LF2Y	LF32	LF34	LF36	LF38
	Dec-Feb 2018	1,419	4.2	839	227	352	24.8	184	1,399	4.3	828	222	349	24.9	183
	Dec-Feb 2019	1,343	3.9	796	200	347	25.8	173	1,323	4.0	786	196	340	25.7	169
	Mar-May 2019	1,292	3.8	766	187	340	26.3	173	1,276	3.9	760	184	332	26.0	168
	Jun-Aug 2019	1,314	3.9	808	173	333	25.3	159	1,297	4.0	804	170	323	24.9	154
	Sep-Nov 2019	1,306	3.8	804	209	293	22.4	160	1,280	3.9	788	205	287	22.4	152
	Dec-Feb 2020	1,364	4.0	842	215	307	22.5	170	1,331	4.0	828	205	298	22.4	160
	Change on quarte	58	0.1	39	6	14	0.1	10	51	0.1	39	0	11	0.0	8
	Change %	4.4		4.8	2.6	4.7		6.5	4.0		5.0	0.2	4.0		5.2
	Change on year	22	0.0	47	15	-40	-3.3	-3	8	0.0	41	9	-42	-3.3	-9
	Change %	1.6		5.9	7.4	-11.5		-1.5	0.6		5.3	4.4	-12.3		-5.2
Men		MGSD	MGSY	MGYK	MGYM	MGYO	YBWJ	YBWM	YBSI	YBTJ	YBWP	YBWS	YBWW	YBWY	YBXB
	Dec-Feb 2018	749	4.2	408	132	209	27.9	119	733	4.3	399	129	205	27.9	119
	Dec-Feb 2019	731	4.1	399	118	215	29.4	114	719	4.2	396	116	208	28.9	111
	Mar-May 2019	712	4.0	395	107	211	29.6	109	704	4.1	391	105	208	29.5	109
	Jun-Aug 2019	727	4.0	419	96	213	29.2	106	716	4.2	418	93	205	28.7	101
	Sep-Nov 2019	729	4.0	434	118	177	24.3	98	713	4.1	423	114	176	24.7	95
	Dec-Feb 2020	763	4.2	470	124	170	22.3	94	740	4.3	460	114	166	22.4	89
	Change on quarte	34	0.2	36	6	-7	-2.0	-4	28	0.1	37	0	-10	-2.3	-6
	Change %	4.6		8.2	4.7	-4.1		-4.5	3.9		8.8	0.3	-5.8		-6.5
	Change on year	32	0.2	71	6	-45	-7.1	-20	21	0.1	65	-2	-42	-6.5	-22
	Change %	4.3		17.8	4.8	-20.9		-17.6	2.9		16.3	-1.6	-20.3		-19.8
Women		MGSE	MGSZ	MGYL	MGYN	MGYP	YBWK	YBWN	LF2J	LF2R	LF2Z	LF33	LF35	LF37	LF39
	Dec-Feb 2018	670	4.2	432	95	143	21.4	65	666	4.3	429	93	144	21.7	64
	Dec-Feb 2019	611	3.8	397	82	132	21.6	59	603	3.9	390	80	132	22.0	58
	Mar-May 2019	580	3.6	371	80	129	22.2	63	573	3.7	368	80	125	21.7	60
	Jun-Aug 2019	586	3.7	389	77	120	20.5	53	581	3.8	386	77	118	20.3	53
	Sep-Nov 2019	577	3.6	370	91	116	20.1	62	567	3.6	365	91	111	19.6	57
	Dec-Feb 2020	601	3.7	373	91	137	22.8	76	591	3.8	367	91	133	22.5	71
	Change on quarte	24	0.1	3	0	21	2.7	15	23	0.1	2	0	22	2.9	14
	Change %	4.2		0.8	0.0	18.2		24.1	4.1		0.5	0.0	19.4		24.5
	Change on year	-10	-0.1	-24	9	5	1.2	18	-12	-0.1	-23	11	0	0.5	13
	Change %	-1.7		-6.1	11.0	3.8		29.7	-2.1		-5.9	13.1	0.2		22.5
		16-17							18-24						
		All	Rate(%) <sup>1</sup>	Up to 6 months	Over 6 and up to 12 months	All over 12 months	% over 12 months	All over 24 months	All	Rate(%) <sup>1</sup>	Up to 6 months	Over 6 and up to 12 months	All over 12 months	% over 12 months	All over 24 months
		15	16	17	18	19	20	21	22	23	24	25	26	27	28
People		YBVH	YBVK	YBXD	YBXG	YBXJ	YBXM	YBXP	YBVN	YBVQ	YBXS	YBXV	YBXY	YBYB	YBYE
	Dec-Feb 2018	127	27.0	102	20	5	4.1	*	396	10.2	270	60	66	16.7	25
	Dec-Feb 2019	88	21.0	69	12	7	8.1	*	404	10.3	276	66	63	15.6	16
	Mar-May 2019	83	19.6	66	11	7	8.1	*	410	10.7	273	67	70	17.0	17
	Jun-Aug 2019	86	20.3	66	14	6	6.5	*	408	10.8	284	47	78	19.1	18
	Sep-Nov 2019	94	21.4	78	13	*	*	*	388	10.2	262	71	55	14.1	17
	Dec-Feb 2020	105	23.8	81	16	8	8.0	*	408	10.5	287	61	60	14.8	21
	Change on quarte	12	2.4	3	3	*	*	*	20	0.3	25	-11	6	0.7	4
	Change %	12.6		4.5	22.1	*		*	5.1		9.4	-14.8	10.5		25.6
	Change on year	17	2.8	12	4	1	-0.1	*	4	0.2	11	-5	-3	-0.8	4
	Change %	19.5		16.7	36.8	18.4		*	0.9		4.0	-7.2	-4.3		26.9
Men		YBVI	YBVL	YBXE	YBXH	YBXK	YBXN	YBXQ	YBVO	YBVR	YBXT	YBXW	YBXZ	YBYC	YBYF
	Dec-Feb 2018	61	27.0	48	11	*	*	*	229	11.3	143	41	45	19.5	19
	Dec-Feb 2019	50	23.8	38	7	6	11.4	*	248	12.0	162	43	43	17.3	13
	Mar-May 2019	47	23.0	38	*	*	*	*	249	12.5	156	43	50	20.1	13
	Jun-Aug 2019	50	24.2	38	8	*	*	*	246	12.4	161	30	56	22.7	14
	Sep-Nov 2019	53	25.7	44	7	*	*	*	240	12.0	153	49	38	15.9	9
	Dec-Feb 2020	62	29.4	50	7	5	7.4	*	240	11.8	167	39	34	14.0	9
	Change on quarte	9	3.8	6	0	*	*	*	0	-0.2	15	-10	-4	-1.9	0
	Change %	16.9		14.3	-0.7	*		*	0.2		9.6	-20.0	-11.5		1.3
	Change on year	11	5.6	12	0	-1	-4.0	*	-8	-0.2	5	-4	-9	-3.2	-4
	Change %	22.5		33.0	0.3	-20.7		*	-3.2		3.1	-8.9	-21.4		-29.4
Women		YBVJ	YBVM	YBXF	YBXI	YBXL	YBXO	YBXR	YBVP	YBVS	YBXU	YBXX	YBYA	YBYD	YBYG
	Dec-Feb 2018	67	27.0	54	9	*	*	*	167	9.0	126	19	22	12.9	6
	Dec-Feb 2019	38	18.1	32	5	*	*	*	156	8.3	113	22	20	13.0	*
	Mar-May 2019	36	16.4	28	6	*	*	*	160	8.7	117	24	20	12.3	*
	Jun-Aug 2019	36	16.5	28	6	*	*	*	162	9.1	123	17	22	13.6	5
	Sep-Nov 2019	41	17.6	34	6	*	*	*	148	8.2	109	22	17	11.2	8
	Dec-Feb 2020	44	18.7	31	9	*	*	*	168	9.0	119	22	27	15.9	12
	Change on quarte	3	1.2	-3	3	*	*	*	19	0.8	10	-1	10	4.8	4
	Change %	7.1		-8.5	47.4	*		*	13.1		9.2	-3.5	61.2		55.1
	Change on year	6	0.6	-1	4	*	*	*	12	0.7	6	-1	6	2.9	*
	Change %	15.7		-2.7	88.0	*		*	7.4		5.4	-4.1	31.7		*

Relationship between columns: 1=3+4+5; 8=10+11+12; 15=17+18+19; 22=24+25+26.

<sup>1</sup>Denominator = economically active for that age group.

Source: Labour Force Survey  
Labour market statistics enquiries: labour.market@ons.gov.uk

# UNEMPLOYMENT

## 9(2) Unemployment by age and duration

United Kingdom (thousands) seasonally adjusted

		25-49							50 and over						
		All	Rate(%) <sup>1</sup>	Up to 6 months	Over 6 and up to 12 months	All over 12 months	% over 12 months	All over 24 months	All	Rate(%) <sup>1</sup>	Up to 6 months	Over 6 and up to 12 months	All over 12 months	% over 12 months	All over 24 months
		1	2	3	4	5	6	7	8	9	10	11	12	13	14
People		MGVI	MGXB	YBYH	YBYK	YBYN	YBYQ	YBYT	YBVT	YBVW	YBYW	YBYZ	YBZC	YBZF	YBZI
	Dec-Feb 2018	602	3.2	329	97	176	29.2	91	294	2.8	138	51	105	35.7	69
	Dec-Feb 2019	561	3.0	322	83	156	27.8	85	289	2.7	128	40	121	41.8	71
	Mar-May 2019	524	2.8	299	68	156	29.8	93	275	2.6	128	41	107	38.7	63
	Jun-Aug 2019	548	2.9	324	69	155	28.2	79	271	2.5	134	43	94	34.8	59
	Sep-Nov 2019	542	2.8	317	86	138	25.6	78	283	2.6	147	39	97	34.3	66
	<b>Dec-Feb 2020</b>	532	2.8	324	81	127	23.9	71	319	2.9	151	57	111	34.7	79
	Change on quarter	-10	-0.1	6	-5	-11	-1.6	-6	36	0.3	4	18	14	0.4	13
	Change %	-1.8		2.0	-6.0	-8.0		-8.2	12.8		2.7	47.4	14.2		20.2
	Change on year	-29	-0.2	1	-2	-28	-3.8	-14	30	0.2	23	18	-10	-7.1	7
	Change %	-5.2		0.4	-2.8	-18.3		-16.2	10.4		17.6	44.1	-8.4		10.1
Men		MGVJ	MGXC	YBYI	YBYL	YBYO	YBYR	YBYU	YBVU	YBVX	YBYX	YBZA	YBZD	YBZG	YBZJ
	Dec-Feb 2018	288	2.9	143	50	95	32.9	53	172	3.1	73	30	68	39.6	47
	Dec-Feb 2019	272	2.7	138	44	89	32.9	58	161	2.8	60	24	77	47.7	42
	Mar-May 2019	266	2.6	140	36	90	33.7	59	150	2.6	61	23	66	44.2	38
	Jun-Aug 2019	272	2.7	147	32	93	34.2	50	159	2.8	73	26	60	37.4	42
	Sep-Nov 2019	276	2.7	157	40	78	28.4	48	160	2.8	80	22	59	36.5	41
	<b>Dec-Feb 2020</b>	273	2.7	167	42	63	23.3	37	188	3.2	85	35	68	36.2	48
	Change on quarter	-3	0.0	10	2	-15	-5.1	-12	28	0.5	5	14	9	-0.4	7
	Change %	-1.2		6.3	4.2	-19.0		-24.4	17.3		5.8	62.9	16.0		17.9
	Change on year	1	0.0	29	-2	-26	-9.6	-21	27	0.4	25	11	-9	-11.6	6
	Change %	0.4		20.9	-4.6	-29.0		-36.5	16.9		40.7	47.9	-11.4		13.0
Women		MGVK	MGXD	YBYJ	YBYM	YBYP	YBYS	YBYV	YBVV	YBVY	YBYY	YBZB	YBZE	YBZH	YBZK
	Dec-Feb 2018	314	3.5	186	46	81	25.8	38	123	2.5	65	21	37	30.2	22
	Dec-Feb 2019	289	3.2	184	39	66	22.9	27	128	2.5	68	16	44	34.4	29
	Mar-May 2019	258	2.9	159	32	67	25.8	35	125	2.5	67	18	40	32.2	25
	Jun-Aug 2019	276	3.1	177	37	62	22.4	29	112	2.2	61	16	35	31.1	18
	Sep-Nov 2019	266	3.0	160	46	60	22.6	29	122	2.4	67	17	38	31.3	25
	<b>Dec-Feb 2020</b>	259	2.9	156	39	64	24.7	35	131	2.5	66	22	43	32.6	31
	Change on quarter	-7	-0.1	-4	-7	4	2.0	5	8	0.1	-1	5	4	1.3	6
	Change %	-2.5		-2.3	-15.1	6.2		18.6	6.9		-0.9	27.6	11.4		23.7
	Change on year	-30	-0.4	-28	0	-3	1.7	7	3	0.0	-2	6	-1	-1.8	2
	Change %	-10.5		-15.0	-0.8	-3.8		26.4	2.2		-2.7	38.4	-3.2		5.9

Relationship between columns: 1=3+4+5; 8=10+11+12.

<sup>1</sup>Denominator = economically active for that age group.

Source: Labour Force Survey  
Labour market statistics enquiries: labour.market@ons.gov.uk

# ECONOMIC ACTIVITY AND INACTIVITY

## 10 Economic activity by age

United Kingdom (thousands) seasonally adjusted

		All aged 16 & over	16 - 64	16 - 17	18 - 24	25 - 34	35 - 49	50 - 64	65+
		1	2	3	4	5	6	7	8
<b>Economically active</b>									
<b>People</b>	MGSF	LF2K	YBZL	YBZO	YBZR	YBZU	LF3A	LFK8	
	Dec-Feb 2018	33,683	32,463	471	3,870	7,729	11,198	9,195	1,220
	Dec-Feb 2019	34,063	32,761	420	3,933	7,812	11,168	9,428	1,302
	Mar-May 2019	34,041	32,698	425	3,842	7,818	11,157	9,455	1,343
	Jun-Aug 2019	34,006	32,663	423	3,774	7,822	11,142	9,501	1,344
	Sep-Nov 2019	34,207	32,857	438	3,809	7,879	11,180	9,552	1,350
	<b>Dec-Feb 2020</b>	34,437	33,018	443	3,895	7,893	11,189	9,599	1,419
	Change on quarter	230	161	5	86	14	8	48	69
	Change %	0.7	0.5	1.2	2.3	0.2	0.1	0.5	5.1
	Change on year	374	257	23	-38	81	21	171	117
	Change %	1.1	0.8	5.5	-1.0	1.0	0.2	1.8	9.0
	MGSG	YBSL	YBZM	YBZP	YBZS	YBZV	YBZY	YCAE	
	Dec-Feb 2018	17,839	17,084	224	2,017	4,151	5,882	4,811	755
	Dec-Feb 2019	18,043	17,252	211	2,061	4,191	5,869	4,919	791
<b>Men</b>	Mar-May 2019	17,993	17,185	202	2,000	4,200	5,870	4,914	807
	Jun-Aug 2019	17,984	17,201	206	1,982	4,195	5,877	4,940	782
	Sep-Nov 2019	18,046	17,255	205	1,997	4,216	5,869	4,967	790
	<b>Dec-Feb 2020</b>	18,108	17,315	210	2,035	4,207	5,866	4,997	794
	Change on quarter	63	59	4	37	-9	-3	30	4
	Change %	0.3	0.3	2.0	1.9	-0.2	-0.1	0.6	0.4
	Change on year	66	63	-2	-27	16	-2	78	3
	Change %	0.4	0.4	-0.9	-1.3	0.4	0.0	1.6	0.3
<b>Women</b>	MGSF	LF2K	YBZL	YBZO	YBZR	YBZU	LF3A	LFK8	
	Dec-Feb 2018	15,843	15,378	247	1,853	3,578	5,316	4,385	465
	Dec-Feb 2019	16,021	15,509	209	1,871	3,621	5,299	4,509	511
	Mar-May 2019	16,048	15,512	222	1,842	3,619	5,287	4,542	536
	Jun-Aug 2019	16,023	15,462	217	1,793	3,627	5,265	4,560	561
	Sep-Nov 2019	16,161	15,602	232	1,811	3,663	5,311	4,585	560
	<b>Dec-Feb 2020</b>	16,329	15,703	233	1,860	3,686	5,322	4,602	625
	Change on quarter	167	101	1	48	23	11	17	66
	Change %	1.0	0.7	0.5	2.7	0.6	0.2	0.4	11.8
	Change on year	308	194	25	-12	65	23	93	114
	Change %	1.9	1.2	11.9	-0.6	1.8	0.4	2.1	22.3
	MGSH	LF2L	YBZN	YBZQ	YBZT	YBZW	LF3B	LFK9	
	Dec-Feb 2018	15,843	15,378	247	1,853	3,578	5,316	4,385	465
	Dec-Feb 2019	16,021	15,509	209	1,871	3,621	5,299	4,509	511
	Mar-May 2019	16,048	15,512	222	1,842	3,619	5,287	4,542	536
<b>Men</b>	Jun-Aug 2019	16,023	15,462	217	1,793	3,627	5,265	4,560	561
	Sep-Nov 2019	16,161	15,602	232	1,811	3,663	5,311	4,585	560
	<b>Dec-Feb 2020</b>	16,329	15,703	233	1,860	3,686	5,322	4,602	625
	Change on quarter	167	101	1	48	23	11	17	66
	Change %	1.0	0.7	0.5	2.7	0.6	0.2	0.4	11.8
	Change on year	308	194	25	-12	65	23	93	114
	Change %	1.9	1.2	11.9	-0.6	1.8	0.4	2.1	22.3
<b>Women</b>	MGWG	LF22	YCAG	YCAJ	YCAM	YCAP	LF2C	LFL2	
	Dec-Feb 2018	63.7	78.8	33.5	68.8	86.8	87.5	73.7	10.4
	Dec-Feb 2019	64.0	79.3	30.2	70.9	87.3	87.6	74.5	11.0
	Mar-May 2019	63.9	79.1	30.5	69.5	87.3	87.6	74.4	11.3
	Jun-Aug 2019	63.8	79.0	30.3	68.5	87.3	87.6	74.5	11.2
	Sep-Nov 2019	64.1	79.4	31.2	69.4	87.9	87.9	74.7	11.2
	<b>Dec-Feb 2020</b>	64.4	79.8	31.3	71.2	88.1	87.9	74.8	11.8
	Change on quarter	0.3	0.3	0.2	1.8	0.2	0.1	0.1	0.5
	Change on year	0.4	0.4	1.2	0.4	0.8	0.3	0.4	0.8
	MGWH	MGSP	YCAH	YCAK	YCAN	YCAQ	MGWQ	MGWT	
	Dec-Feb 2018	68.9	83.4	31.1	70.2	93.2	93.1	78.5	14.0
	Dec-Feb 2019	69.3	84.0	29.7	72.7	93.3	93.3	79.2	14.4
	Mar-May 2019	69.0	83.6	28.4	70.8	93.4	93.4	78.8	14.6
	Jun-Aug 2019	68.9	83.6	28.9	70.5	93.2	93.5	79.0	14.1
	Sep-Nov 2019	69.0	83.8	28.6	71.3	93.6	93.4	79.2	14.2
	<b>Dec-Feb 2020</b>	69.2	84.1	29.0	72.9	93.4	93.4	79.4	14.2
	Change on quarter	0.1	0.2	0.4	1.6	-0.2	-0.1	0.2	0.0
	Change on year	-0.2	0.1	-0.7	0.1	0.0	0.1	0.2	-0.2
<b>Women</b>	MGWI	LF23	YCAI	YCAL	YCAO	YCAR	LF2D	LFL3	
	Dec-Feb 2018	58.6	74.2	36.0	67.3	80.4	82.0	69.0	7.4
	Dec-Feb 2019	59.0	74.7	30.7	68.9	81.2	82.1	69.9	8.0
	Mar-May 2019	59.0	74.7	32.7	68.1	81.1	82.0	70.2	8.4
	Jun-Aug 2019	58.9	74.4	31.9	66.5	81.3	81.7	70.2	8.7
	Sep-Nov 2019	59.3	75.1	33.9	67.4	82.2	82.5	70.4	8.7
	<b>Dec-Feb 2020</b>	59.9	75.5	33.9	69.5	82.8	82.7	70.4	9.6
	Change on quarter	0.5	0.4	-0.1	2.1	0.6	0.2	0.0	1.0
	Change on year	0.9	0.8	3.2	0.6	1.6	0.6	0.5	1.7

Relationship between columns: 1= 2+8; 2=3+4+5+6+7.

'Denominator = all persons in the relevant age group.

Data source: Labour Force Survey

Labour market statistics enquiries: labour.market@ons.gov.uk

# ECONOMIC ACTIVITY AND INACTIVITY

## 11 Economic inactivity: reasons

United Kingdom (thousands) seasonally adjusted

	Total aged 16-64		Economic inactivity by reason (aged 16 to 64)						Wanting/not wanting a job (aged 16 to 64)	
	1	2	3	4	5	6	7	8	9	10
	LF2M	LF63	LF65	LF67	LF69	LFL8	LF6B	LF6D	LFL9	LFM2
<b>People</b>										
May-Jul 2019	8,587	2,241	1,999	164	2,048	40	1,101	995	6,712	1,875
Jun-Aug 2019	8,676	2,316	1,980	169	2,069	39	1,120	982	6,792	1,884
Jul-Sep 2019	8,616	2,295	1,970	171	2,054	34	1,117	974	6,760	1,856
Aug-Oct 2019	8,606	2,280	1,966	174	2,072	32	1,117	965	6,767	1,839
Sep-Nov 2019	8,506	2,263	1,934	161	2,065	30	1,114	939	6,646	1,859
Oct-Dec 2019	8,478	2,255	1,885	160	2,075	33	1,123	947	6,605	1,873
Nov-Jan 2020	8,431	2,186	1,868	178	2,120	31	1,111	937	6,560	1,871
<b>Dec-Feb 2020</b>	8,370	2,130	1,840	177	2,112	35	1,122	954	6,522	1,848
Change on quarter	-136	-133	-94	16	47	5	8	15	-124	-11
Change %	-1.6	-5.9	-4.9	9.6	2.3	16.8	0.7	1.6	-1.9	-0.6
Change on year	-166	-97	-168	-13	134	3	11	-36	-185	18
Change %	-1.9	-4.4	-8.4	-6.8	6.8	8.8	1.0	-3.6	-2.8	1.0
<b>Men</b>	YBSO	BEEEX	BEAQ	BEDI	BEDL	YCFP	BEDR	BEDU	YBWA	YBWD
Dec-Feb 2018	3,403	1,190	247	96	953	21	473	423	2,544	858
Dec-Feb 2019	3,290	1,122	212	94	939	22	491	409	2,557	733
Mar-May 2019	3,368	1,168	224	86	948	20	500	422	2,618	751
Jun-Aug 2019	3,366	1,160	227	73	962	24	508	411	2,598	768
Sep-Nov 2019	3,326	1,147	232	66	961	17	504	399	2,558	767
<b>Dec-Feb 2020</b>	3,281	1,076	226	80	973	24	495	406	2,505	776
Change on quarter	-45	-70	-6	14	13	6	-9	7	-53	8
Change %	-1.3	-6.1	-2.6	21.4	1.3	36.8	-1.7	1.7	-2.1	1.1
Change on year	-9	-46	14	-14	34	2	4	-3	-51	42
Change %	-0.3	-4.1	6.4	-15.0	3.7	7.2	0.8	-0.7	-2.0	5.7
<b>Women</b>	LF2N	LF64	LF66	LF68	LF6A	LFM3	LF6C	LF6E	LFM4	LFM5
Dec-Feb 2018	5,347	1,159	1,823	106	1,030	17	682	529	4,143	1,203
Dec-Feb 2019	5,246	1,105	1,796	95	1,039	10	620	580	4,150	1,096
Mar-May 2019	5,251	1,122	1,790	78	1,069	11	619	562	4,158	1,093
Jun-Aug 2019	5,310	1,156	1,753	95	1,107	15	612	571	4,194	1,116
Sep-Nov 2019	5,180	1,116	1,702	95	1,104	13	610	539	4,088	1,092
<b>Dec-Feb 2020</b>	5,089	1,054	1,614	96	1,139	11	627	547	4,017	1,072
Change on quarter	-91	-63	-88	1	35	-1	17	8	-71	-20
Change %	-1.8	-5.6	-5.2	1.4	3.1	-10.4	2.8	1.5	-1.7	-1.8
Change on year	-157	-51	-182	1	99	1	7	-33	-133	-24
Change %	-3.0	-4.7	-10.1	1.4	9.6	12.2	1.1	-5.7	-3.2	-2.2
Percentage of economically inactive aged from 16 to 64 (%)										
<b>People</b>	LF6V	LF6X	LF6Z	LF73	LF75	LF77	LF79	LF7B	LF7D	LF7F
Dec-Feb 2018	100	26.8	23.7	2.3	22.7	0.4	13.2	10.9	76.4	23.6
Dec-Feb 2019	100	26.1	23.5	2.2	23.2	0.4	13.0	11.6	78.6	21.4
Mar-May 2019	100	26.6	23.4	1.9	23.4	0.4	13.0	11.4	78.6	21.4
Jun-Aug 2019	100	26.7	22.8	1.9	23.8	0.5	12.9	11.3	78.3	21.7
Sep-Nov 2019	100	26.6	22.7	1.9	24.3	0.4	13.1	11.0	78.1	21.9
<b>Dec-Feb 2020</b>	100	25.5	22.0	2.1	25.2	0.4	13.4	11.4	77.9	22.1
<b>Men</b>	BEBP	BEEH	BEEK	BEEN	BEEQ	BEET	BEEW	BEEZ	BEAS	BEGT
Dec-Feb 2018	100	35.0	7.2	2.8	28.0	0.6	13.9	12.4	74.8	25.2
Dec-Feb 2019	100	34.1	6.4	2.9	28.5	0.7	14.9	12.4	77.7	22.3
Mar-May 2019	100	34.7	6.6	2.6	28.1	0.6	14.9	12.5	77.7	22.3
Jun-Aug 2019	100	34.5	6.7	2.2	28.6	0.7	15.1	12.2	77.2	22.8
Sep-Nov 2019	100	34.5	7.0	2.0	28.9	0.5	15.1	12.0	76.9	23.1
<b>Dec-Feb 2020</b>	100	32.8	6.9	2.4	29.7	0.7	15.1	12.4	76.4	23.6
<b>Women</b>	LF6W	LF6Y	LF72	LF74	LF76	LF78	LF7A	LF7C	LF7E	LF7G
Dec-Feb 2018	100	21.7	34.1	2.0	19.3	0.3	12.8	9.9	77.5	22.5
Dec-Feb 2019	100	21.1	34.2	1.8	19.8	0.2	11.8	11.1	79.1	20.9
Mar-May 2019	100	21.4	34.1	1.5	20.4	0.2	11.8	10.7	79.2	20.8
Jun-Aug 2019	100	21.8	33.0	1.8	20.8	0.3	11.5	10.8	79.0	21.0
Sep-Nov 2019	100	21.6	32.9	1.8	21.3	0.2	11.8	10.4	78.9	21.1
<b>Dec-Feb 2020</b>	100	20.7	31.7	1.9	22.4	0.2	12.3	10.8	78.9	21.1

Relationship between columns : 1=2+3+4+5+6+7+8; 1=9+10.

Data Source: Labour Force Survey.

Labour market statistics enquiries: [labour.market@ons.gov.uk](mailto:labour.market@ons.gov.uk)

1. This series comprises those who say they would like a regular paid job, but who do not meet the internationally agreed definition of unemployment because they have not been looking for work in the last four weeks and/or they were unable to start working within two weeks.

# ECONOMIC ACTIVITY AND INACTIVITY

## 12 Educational status, economic activity and inactivity of people aged from 16 to 24

December - February 2020

United Kingdom (thousands) seasonally adjusted

	All aged 16 to 24				In full-time education (FTE)				Not in full-time education (FTE) <sup>1</sup>			
	Total	Employed	Unemployed	Economically inactive	Total	Employed <sup>2</sup>	Unemployed <sup>2</sup>	Economically inactive	Total	Employed	Unemployed	Economically inactive
	1	2	3	4	5	6	7	8	9	10	11	12
<b>Levels</b>												
<b>People</b>												
16-17	1,413	338	105	970	1,225	266	68	890	189	71	37	80
18-24	5,469	3,487	408	1,574	1,763	664	88	1,011	3,706	2,823	320	563
16-24	6,882	3,824	513	2,544	2,987	930	156	1,901	3,894	2,894	358	643
<b>Men</b>												
16-17	724	148	62	514	614	107	37	471	110	41	25	43
18-24	2,792	1,795	240	758	830	279	42	509	1,962	1,515	198	249
16-24	3,516	1,942	302	1,272	1,445	386	79	980	2,072	1,556	223	292
<b>Women</b>												
16-17	689	190	44	456	610	160	31	419	79	30	12	37
18-24	2,676	1,692	168	816	932	385	46	502	1,744	1,307	122	314
16-24	3,366	1,882	211	1,272	1,543	544	77	921	1,823	1,337	135	351
<b>Changes on quarter</b>												
<b>People</b>												
16-17	9	-7	12	4	28	12	8	8	-19	-19	4	-4
18-24	-20	66	20	-106	-56	50	16	-122	36	16	4	16
16-24	-11	59	32	-102	-29	62	24	-114	18	-2	8	12
<b>Men</b>												
16-17	5	-5	9	1	15	4	8	3	-11	-9	1	-2
18-24	-10	37	0	-48	-41	18	7	-66	30	19	-7	18
16-24	-6	32	9	-47	-26	22	15	-63	20	11	-6	15
<b>Women</b>												
16-17	5	-2	3	4	13	8	-1	5	-8	-10	4	-2
18-24	-10	29	19	-58	-16	32	9	-57	6	-3	11	-2
16-24	-5	27	22	-55	-3	40	8	-51	-2	-13	14	-3
<b>Rates(%)<sup>3</sup></b>												
<b>People</b>												
16-17		23.9	23.8	68.7		21.8	20.3	72.7		37.7	34.5	42.5
18-24		63.8	10.5	28.8		37.7	11.7	57.4		76.2	10.2	15.2
16-24		55.6	11.8	37.0		31.1	14.3	63.6		74.3	11.0	16.5
<b>Men</b>												
16-17		20.4	29.4	71.0		17.4	25.6	76.7		37.6	37.7	39.6
18-24		64.3	11.8	27.1		33.6	13.1	61.3		77.2	11.6	12.7
16-24		55.2	13.5	36.2		26.7	17.0	67.8		75.1	12.5	14.1
<b>Women</b>												
16-17		27.5	18.7	66.1		26.2	16.4	68.7		37.8	29.4	46.4
18-24		63.2	9.0	30.5		41.3	10.6	53.9		75.0	8.5	18.0
16-24		55.9	10.1	37.8		35.3	12.4	59.7		73.4	9.1	19.3
<b>Changes on quarter</b>												
<b>People</b>												
16-17		-0.6	2.4	-0.2		0.5	1.1	-1.0		-5.7	7.5	1.8
18-24		1.4	0.3	-1.8		3.9	1.2	-4.9		-0.3	0.1	0.3
16-24		0.9	0.5	-1.4		2.3	1.1	-3.2		-0.4	0.2	0.2
<b>Men</b>												
16-17		-0.8	3.8	-0.4		0.2	3.9	-1.5		-4.0	5.0	1.5
18-24		1.6	-0.2	-1.6		3.6	1.3	-4.7		-0.2	-0.5	0.7
16-24		1.0	0.2	-1.3		1.9	2.1	-3.1		-0.2	-0.4	0.6
<b>Women</b>												
16-17		-0.5	1.2	0.1		0.8	-1.1	-0.6		-8.0	11.3	2.3
18-24		1.3	0.8	-2.1		4.1	1.1	-5.1		-0.4	0.7	-0.2
16-24		0.9	0.8	-1.6		2.7	0.4	-3.2		-0.6	1.0	-0.2

Relationship between columns: 1=5+9; 2=6+10; 3=7+11.

Source: Labour Force Survey  
Labour market statistics enquiries: labour.market@ons.gov.uk

1. Not in full-time education includes people in part-time education and/or some form of training. Estimates of the number of young people who were not in employment, education or training ("NEET") cannot therefore be derived from this table. Estimates of young people who were NEET are published separately at:  
<https://www.ons.gov.uk/employmentandlabourmarket/peoplenotinwork/unemployment/bulletins/youngpeoplenotineducationemploymentortrainingneet/latest>

2. People in full-time education are employed if they have a part-time job or unemployed if they are looking for part-time employment.

3. Denominator = all persons in the relevant age group for economically active, total in employment and economically inactive; economically active for unemployment.

# 17 International comparisons of employment and unemployment

(first published 17 March 2020)

Employment rates as published by EUROSTAT: (not seasonally adjusted)					Unemployment rates as published by EUROSTAT on 1 April 2020 (seasonally adjusted)					
		Latest period	Employment rate (%) <sup>1 2</sup>	Change on year %			Latest Period	Unemployment rate (%) <sup>3</sup>	Change on month %	Change on year %
Employment rates as published by EUROSTAT: (not seasonally adjusted)					Unemployment rates as published by EUROSTAT on 1 April 2020 (seasonally adjusted)					
United Kingdom (*)	ANZ6	Oct-Dec 19	75.6	0.6	United Kingdom (*)	ZXDW	Dec 19	3.7	0.0	-0.1
European Union (EU)					European Union (EU)					
Austria	YXSN	Oct-Dec 19	73.8	0.5	Austria	ZXDS	Feb 20	4.4	0.1	-0.3
Belgium	YXSO	Oct-Dec 19	65.3	0.1	Belgium	ZXDI	Feb 20	5.2	0.0	-0.3
Bulgaria	A495	Oct-Dec 19	70.0	2.3	Bulgaria	A492	Feb 20	4.1	0.0	-0.6
Croatia	GUMI	Oct-Dec 19	62.2	1.6	Croatia	GUMJ	Feb 20	6.2	-0.1	-1.0
Cyprus	A4AC	Oct-Dec 19	71.0	1.8	Cyprus	A4AN	Feb 20	5.8	-0.2	-1.7
Czech Republic	A4AD	Oct-Dec 19	75.3	-0.1	Czech Republic	A4AO	Feb 20	2.0	0.0	0.1
Denmark	YXSP	Oct-Dec 19	75.4	1.1	Denmark	ZXDJ	Feb 20	4.9	0.1	-0.2
Estonia	A4AE	Oct-Dec 19	76.1	0.3	Estonia	A4AP	Jan 20	4.7	0.3	0.5
Finland	YXSQ	Oct-Dec 19	72.7	0.6	Finland	ZXDU	Feb 20	6.5	0.0	-0.2
France	YXSR	Oct-Dec 19	65.9	0.5	France	ZXDN	Feb 20	8.1	-0.1	-0.6
Germany	YXSS	Oct-Dec 19	77.0	0.5	Germany	ZXDK	Feb 20	3.2	0.0	0.0
Greece	YXST	Oct-Dec 19	56.5	1.4	Greece	ZXDL	Jan 20	16.4	0.0	-2.1
Hungary	A4AF	Oct-Dec 19	70.3	0.8	Hungary	A4AQ	Jan 20	3.4	0.0	-0.1
Ireland	YXSU	Oct-Dec 19	70.2	1.1	Ireland	ZXDO	Mar 20	5.4	0.6	0.4
Italy	YXSV	Oct-Dec 19	59.2	0.7	Italy	ZXDP	Feb 20	9.7	-0.1	-0.8
Latvia	A4AG	Oct-Dec 19	72.7	0.9	Latvia	A4AR	Feb 20	6.4	-0.1	-0.2
Lithuania	A4AH	Oct-Dec 19	73.2	0.3	Lithuania	A4AS	Feb 20	6.6	0.0	0.6
Luxembourg	YXSW	Oct-Dec 19	67.9	-0.2	Luxembourg	ZXDQ	Feb 20	5.7	0.0	0.3
Malta	A4AI	Oct-Dec 19	74.1	1.3	Malta	A4AT	Feb 20	3.3	-0.1	-0.4
Netherlands	YXSX	Oct-Dec 19	78.4	0.5	Netherlands	ZXDR	Feb 20	2.9	-0.1	-0.5
Poland	A4AJ	Oct-Dec 19	68.5	1.2	Poland	A4AU	Feb 20	2.9	0.0	-0.9
Portugal	YXSY	Oct-Dec 19	70.6	0.7	Portugal	ZXDT	Feb 20	6.5	-0.2	0.0
Romania	A494	Oct-Dec 19	66.0	1.5	Romania	A48Z	Feb 20	3.9	0.0	0.1
Slovak Republic	A4AK	Oct-Dec 19	68.5	0.3	Slovak Republic	A4AV	Feb 20	5.5	0.0	-0.4
Slovenia	A4AL	Oct-Dec 19	71.6	-0.2	Slovenia	A4AW	Feb 20	3.6	-0.1	-0.9
Spain	YXSZ	Oct-Dec 19	63.7	0.7	Spain	ZXDM	Feb 20	13.6	-0.1	-0.6
Sweden	YXTA	Oct-Dec 19	76.7	-0.3	Sweden <sup>5</sup>	ZXDV	Feb 20	7.6	0.4	0.9
Total EU <sup>4</sup>	A496	Oct-Dec 19	68.6	0.7	Total EU <sup>4</sup>	A493	Feb 20	6.5	0.0	-0.4
Eurozone <sup>4</sup>	YXTC	Oct-Dec 19	68.3	0.7	Eurozone <sup>4</sup>	ZXDH	Feb 20	7.3	-0.1	-0.5
Employment rates published by the OECD (seasonally adjusted)					Unemployment rates as published by national statistical offices (seasonally adjusted)					
Canada	A48O	Jan-Mar 20	73.2	1.0	Canada	ZXDZ	Mar 20	7.8	2.2	2.1
Japan	A48P	Oct-Dec 19	78.1	0.8	Japan	ZXDY	Feb 20	2.4	0.0	0.0
United States	A48Q	Jan-Mar 20	71.4	0.3	United States	ZXDX	Mar 20	4.4	0.9	0.6

Sources: EUROSTAT, OECD, national statistical offices.  
Labour market statistics enquiries: labour.market@ons.gov.uk

(\*) Note: The UK rates shown in this table are as published by EUROSTAT (the EUs statistical office). See Table 1 for the latest rates for the UK as published by ONS.

1. All employment rates shown in this table are for those aged from 15 to 64 except for the rate for the United States published by OECD which are for those aged from 16 to 64.
2. The employment rates for the EU are published by EUROSTAT and are not seasonally adjusted. EUROSTAT do not publish seasonally adjusted (SA) employment rates but SA rates for some EU countries are published by OECD. These OECD employment rates are available on our website at [dataset A10](#).
3. Unemployment rates published by EUROSTAT for most EU countries (but not for the UK), are calculated by extrapolating from the most recent LFS data using monthly registered unemployment data. A standard population basis (15-74) is used by EUROSTAT except for Spain, Italy and the UK (16-74). The unemployment rate for the US is based on those aged 16 and over, but the rates for Canada and Japan are for those aged 15 and over. All unemployment rates shown in this table are seasonally adjusted.
4. The "Total EU" series consist of all 27 EU countries. The Eurozone figures consist of the following EU countries: Austria, Belgium, Cyprus, Estonia, Finland, France, Germany, Greece, Ireland, Italy, Latvia, Lithuania, Luxembourg, Malta, Netherlands, Portugal, Slovak Republic, Slovenia and Spain.
5. The EU unemployment rates are as published on the EUROSTAT database. For Sweden the rates on the database differ from those shown in the EUROSTAT News Release published on 1 April 2020. This is because the figures for Sweden on the database are seasonally adjusted estimates but the figures for Sweden shown in the News Release are the trend component.

## 18 Labour disputes

United Kingdom, not seasonally adjusted

		Working days lost <sup>1,2</sup> (thousands)	Working days lost in the Public Sector <sup>1,2</sup> (thousands)	Working days lost in the Private Sector <sup>1,2</sup> (thousands)	Number of stoppages <sup>3</sup>	Number of stoppages in the Public Sector	Number of stoppages in the Private Sector	Workers involved (thousands) <sup>1,3</sup>
		1	2	3	4	5	6	7
		BBFW	F8XZ	F8Y2	BLUU	F8Y3	F8Y4	BLUT
2018	January	9	1	8	18	4	14	3
2019	January	11	1	11	10	2	8	6
	February	7	2	5	11	5	6	6
	March	9	1	8	14	6	8	5
	April	2	1	2	8	1	7	1
	May	10	1	10	14	2	12	5
	June	12	1	12	24	5	19	3
	July	11	4	7	24	9	15	7
	August	7	1	6	10	2	8	2
	September	9	1	8	14	3	11	3
	October	8	1	7	13	5	8	2
	November	84	14	69	13	4	9	21
	December (r)	64	7	57	12	7	5	19
2020	January (p)	18	17	1	7	5	2	7
Cumulative totals 12 months to:								
Jan 19		275	26	249	82	23	59	44
Jan 20 (p)		242	50	192	99	34	65	43

Relationship between columns 1=2+3; 4=5+6

Data source: ONS Labour Disputes Survey  
Labour disputes enquiries 01633 455400

1. Estimates of working days lost and workers involved are shown to the nearest thousand. Unrounded estimates of less than 500 therefore round to zero.
2. Due to rounding the working days lost for the public and private sectors may not add up to the total working days lost.
3. The latest 12 month cumulative totals for the figures in these columns will not necessarily equal the sum of the 12 months as some disputes continue for over one month. These disputes appear in each month's data, but only once in the total.

# REDUNDANCIES

## 22 Redundancies: level and rates<sup>1</sup>

United Kingdom (seasonally adjusted)

	People (aged 16 and over)		Men (aged 16 and over)		Women (aged 16 and over)	
	Level (000s)	Rate <sup>1</sup>	Level (000s)	Rate <sup>1</sup>	Level (000s)	Rate <sup>1</sup>
	BEAO	BEIR	BEIU	BEIX	BEJA	BEJD
Dec-Feb 2018	97	3.6	55	4.0	42	3.1
Dec-Feb 2019	88	3.2	56	4.0	32	2.4
Mar-May 2019	101	3.6	55	4.0	45	3.3
Jun-Aug 2019	115	4.1	58	4.2	56	4.1
Sep-Nov 2019	115	4.2	63	4.6	52	3.8
<b>Dec-Feb 2020</b>	107	3.8	59	4.2	48	3.5
change on quarter	-8	-0.3	-5	-0.3	-4	-0.3
change %	-7.1		-7.3		-6.9	
change on year	19	0.7	3	0.2	16	1.1
change %	21.7		5.4		50.0	

Data source: Labour Force Survey

Labour market statistics enquiries: [labour.market@ons.gov.uk](mailto:labour.market@ons.gov.uk)

1. The redundancy rate is the ratio of the redundancy level for the given quarter to the seasonally adjusted number of employees in the previous quarter, multiplied by 1,000.