

Statistical bulletin

Labour market overview, UK: May 2020

Estimates of employment, unemployment, economic inactivity and other employment-related statistics for the UK.



Contact:
Debra Leaker
labour.market@ons.gov.uk
+44 (0)1633 455400

Release date:
19 May 2020

Next release:
16 June 2020

Notice

19 May 2020

The effect of the coronavirus (COVID-19) pandemic on our capacity means we have reviewed the existing labour market releases and will be suspending some publications.

This will protect the delivery and quality of our remaining labour market outputs as well as ensuring we can respond to new demands as a direct result of COVID-19. More details about the impact on labour market outputs can be found in our [statement](#).

Table of contents

1. [Other pages in this release](#)
2. [Main points](#)
3. [Things you need to know](#)
4. [Employment](#)
5. [Hours worked](#)
6. [Unemployment](#)
7. [Economic inactivity](#)
8. [Earnings growth](#)
9. [Vacancies](#)
10. [Economic commentary](#)
11. [Labour market data](#)
12. [Glossary](#)
13. [Measuring the data](#)
14. [Strengths and limitations](#)
15. [Related links](#)

1 . Other pages in this release

Other commentary from the latest labour market data can be found on the following pages:

- [Employment in the UK](#)
- [Average weekly earnings in Great Britain](#)
- [Vacancies and jobs](#)

2 . Main points

- The UK employment rate in the three months to March 2020 was estimated at a joint-record high of 76.6%, 0.6 percentage points higher than a year earlier and 0.2 percentage points up on the previous quarter.
- The UK unemployment rate for the three months to March 2020 was estimated at 3.9%, 0.1 percentage points higher than a year earlier and 0.1 percentage points higher than the previous quarter.
- The total number of weekly hours worked in the three months to March 2020 was 1,040.6 million, 12.4 million hours less than the previous year.
- In real terms (after adjusting for [inflation](#)), annual earnings growth was estimated to be 0.7% in total pay and 1.0% in regular pay, in the three months to March 2020, both down from a recent peak of 2.0% in the three months to June 2019.
- There were an estimated 637,000 vacancies in the UK in February to April 2020; this is 170,000 fewer than the previous quarter and 210,000 fewer than a year earlier.
- [Earnings and employment from Pay As You Earn \(PAYE\) Real Time Information \(RTI\), UK: May 2020](#) is also released today; this is an experimental monthly estimate of paid employees and their pay from PAYE RTI and includes a flash estimate of employment and median pay for April 2020.

The data in this bulletin come from surveys of households and businesses. It is not possible to survey every household and business each month, so these statistics are estimates based on samples.

3 . Things you need to know

Economic commentary

Following a review of our outputs over recent months, the way we publish our labour market content is changing. From May 2020, the labour market economic commentary will no longer be published as an [individual publication](#). Instead, economic commentary will be included in this monthly Labour market overview, see Economic commentary in [Section 10](#).

Coronavirus and the Labour Market

Labour Force Survey estimates

Labour Force Survey estimates presented in this bulletin are based on interviews that took place throughout the period from the start of January to the end of March 2020. Consequently, most interviews relate to the period prior to the implementation of coronavirus (COVID-19) social distancing measures. Interviews in the final week of March relate to the period following the government closure of schools, introduction of lockdown and announcement of measures aimed at protecting businesses and jobs.

Average weekly earnings

Average weekly earnings (AWE) estimates are based on the pay period that includes the last week of each month, which in March 2020 was after the implementation of coronavirus (COVID-19) social distancing and lockdown measures.

Vacancies

Vacancy estimates are based on specific count dates each month; in April 2020, this was the 3 April, after the implementation of the coronavirus (COVID-19) social distancing measures.

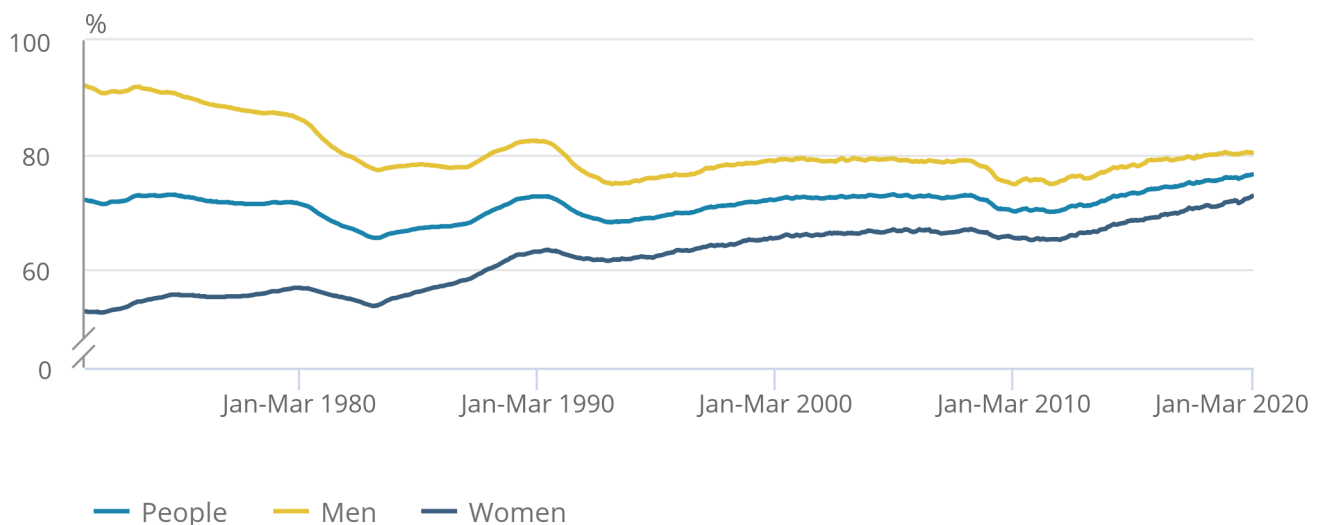
4 . Employment

Figure 1: The employment rate for all people increased by 0.6 percentage points on the year to a joint record high of 76.6%

UK employment rates (aged 16 to 64 years), seasonally adjusted, between January to March 1971 and January to March 2020

Figure 1: The employment rate for all people increased by 0.6 percentage points on the year to a joint record high of 76.6%

UK employment rates (aged 16 to 64 years), seasonally adjusted, between January to March 1971 and January to March 2020



Source: Office for National Statistics – Labour Force Survey

[Employment](#) measures the number of people aged 16 years and over in paid work and those who had a job that they were temporarily away from. The employment rate is the proportion of people aged between 16 and 64 years who are in employment.

Estimated employment rates for people aged between 16 and 64 years have generally been increasing since early 2012. Recent increases have largely been driven by increases in the employment rate for women (Figure 1).

For January to March 2020:

- the estimated employment rate for all people was at a joint-record high of 76.6%; this is 0.6 percentage points up on the year and 0.2 percentage points up on the quarter
- the estimated employment rate for men was 80.4%; this is 0.1 percentage points up on the year and 0.2 percentage points down on the quarter
- the estimated employment rate for women was at a record high of 72.9%; this is 1.1 percentage points up on the year and 0.5 percentage points up on the quarter

Experimental estimates based on returns for individual weeks suggest that the employment rate in the last week of March was broadly consistent with other weeks within the quarter. However, there was a significant increase in the numbers who were employed, but temporarily away from work. Further details of the experimental weekly figures can be found in the [Single month article](#).

The increase in the employment rate for women in recent years is partly a result of changes to the State Pension age for women, resulting in fewer women retiring between the ages of 60 and 65 years. However, since the equalisation of the State Pension age, the employment rate for women has continued to rise.

Estimates for January to March 2020 show a record 33.14 million people aged 16 years and over in employment, 448,000 more than a year earlier. This annual increase was mainly driven by women in employment (up by 369,000 on the year to a record high of 15.79 million), workers aged above 50 years (up by 313,000 to a record high of 10.76 million) and aged 25 to 34 years (up by 106,000 to a record high of 7.65 million), and full-time employees (up by 344,000 to a record high of 20.91 million).

There was a 211,000 increase in employment on the quarter. This was mainly driven by women in employment (up 185,000), workers aged above 65 years (up 124,000 to a record high of 1.42 million), employees (up 238,000 to a record high of 27.96 million), and part-time workers (up 174,000 to 8.69 million).

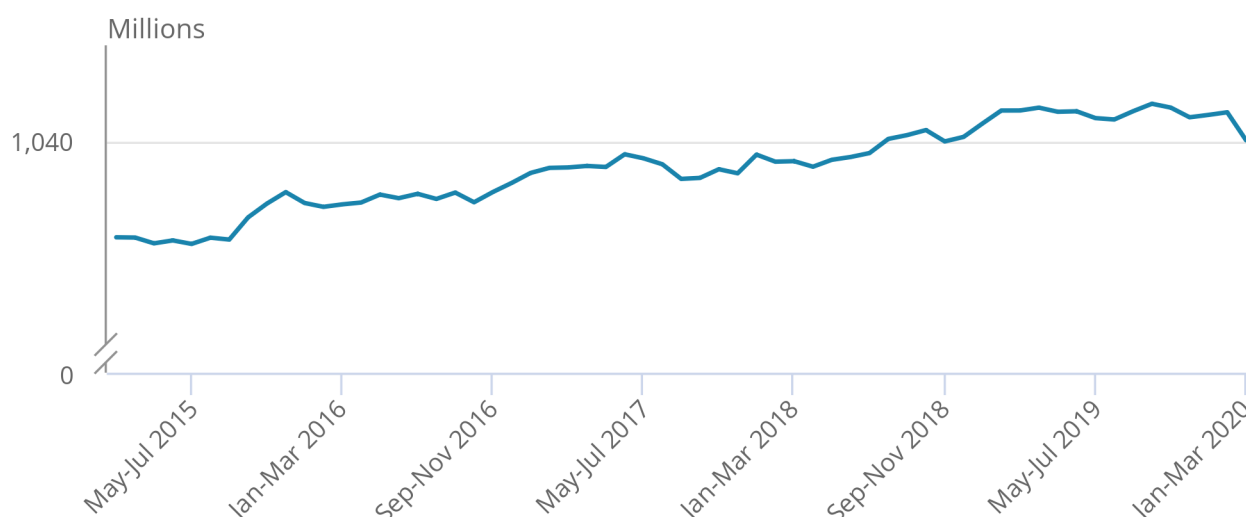
5 . Hours worked

Figure 2: Total weekly hours worked showed its largest annual decrease in 10 years

UK total actual weekly hours worked (people aged 16 years and over), seasonally adjusted, between January to March 2015 and January to March 2020

Figure 2: Total weekly hours worked showed its largest annual decrease in 10 years

UK total actual weekly hours worked (people aged 16 years and over), seasonally adjusted, between January to March 2015 and January to March 2020



Source: Office for National Statistics – Labour Force Survey

Since estimates began in 1971, [total hours worked](#) by women had generally increased, reflecting increases in both the employment rate for women and the UK population. In contrast, total hours worked by men had been relatively stable because of falls in the employment rate for men, and increases in the share of part-time working, roughly offset by population increases.

Between January to March 2019 and January to March 2020, total actual weekly hours worked in the UK decreased by 12.4 million, or 1.2%, to 1.04 billion hours. This was the largest annual decrease since November 2009 to January 2010. The decrease in total actual weekly hours worked over the year was mainly driven by the decrease in men's total hours worked (down 16.0 million hours).

Average weekly hours fell by 0.8 hours on the year to 31.4 hours (Figure 2). The average weekly hours worked by men decreased 1.1 hours to a record low of 35.4 hours, while women's hours decreased 0.4 hours to 27 hours.

Experimental estimates based on returns for individual weeks suggest that this fall was mostly caused by the decrease in hours in the last week of March, with a much smaller decrease in the previous week. In the final week of March, the total number of hours worked was around 25% fewer than in other weeks within the quarter. Further details of the experimental weekly figures can be found in the [Single month article](#).

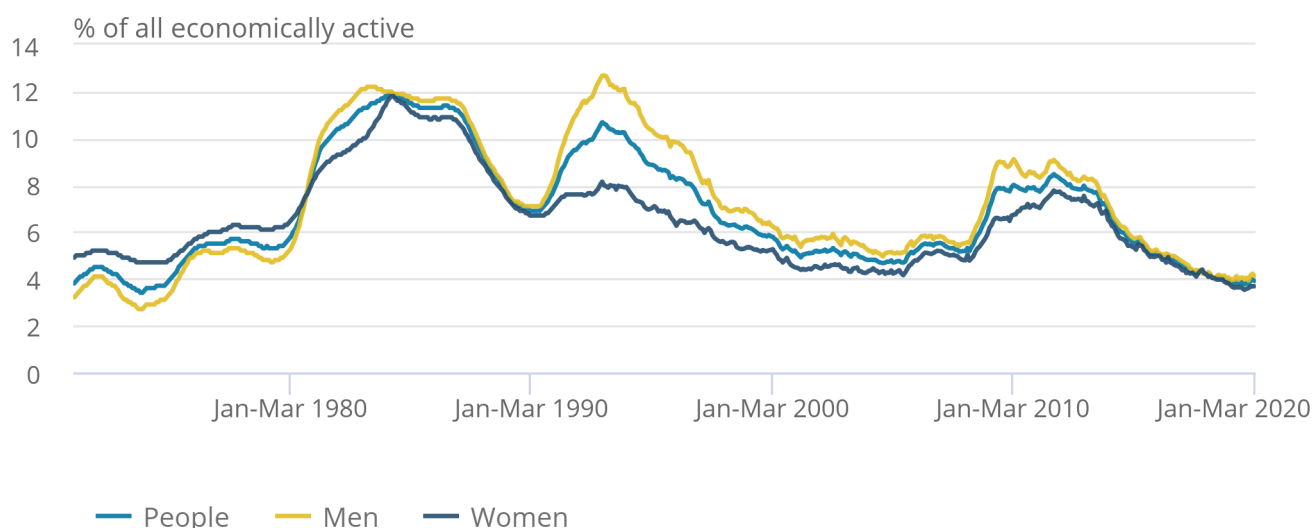
6 . Unemployment

Figure 3: Unemployment rates have levelled off over the last year, following a period of decreasing rates

UK unemployment rates (aged 16 years and over), seasonally adjusted, between January to March 1971 and January to March 2020

Figure 3: Unemployment rates have levelled off over the last year, following a period of decreasing rates

UK unemployment rates (aged 16 years and over), seasonally adjusted, between January to March 1971 and January to March 2020



Source: Office for National Statistics – Labour Force Survey

[Unemployment](#) measures people without a job who have been actively seeking work within the last four weeks and are available to start work within the next two weeks. The unemployment rate is not the proportion of the total population who are unemployed. It is the proportion of the economically active population (those in work plus those seeking and available to work) who are unemployed.

Estimated unemployment rates for both men and women aged 16 years and over have generally been falling since late 2013 but have levelled off in recent periods (Figure 3).

For January to March 2020:

- the estimated UK unemployment rate for all people was 3.9%; 0.1 percentage points higher than a year earlier and also 0.1 percentage points higher than the previous quarter
- the estimated UK unemployment rate for men was 4.1%; this is 0.2 percentage points higher than a year earlier and also 0.2 percentage points higher than the previous quarter
- the estimated UK unemployment rate for women was 3.7%; this is largely unchanged compared with a year earlier and up by 0.1 percentage points on the quarter

For January to March 2020, an estimated 1.35 million people were unemployed. This is 50,000 more than a year earlier but 478,000 fewer than five years earlier. The increase on the year is the third annual increase in unemployment since May to July 2012, and it was driven by a 44,000 increase for men.

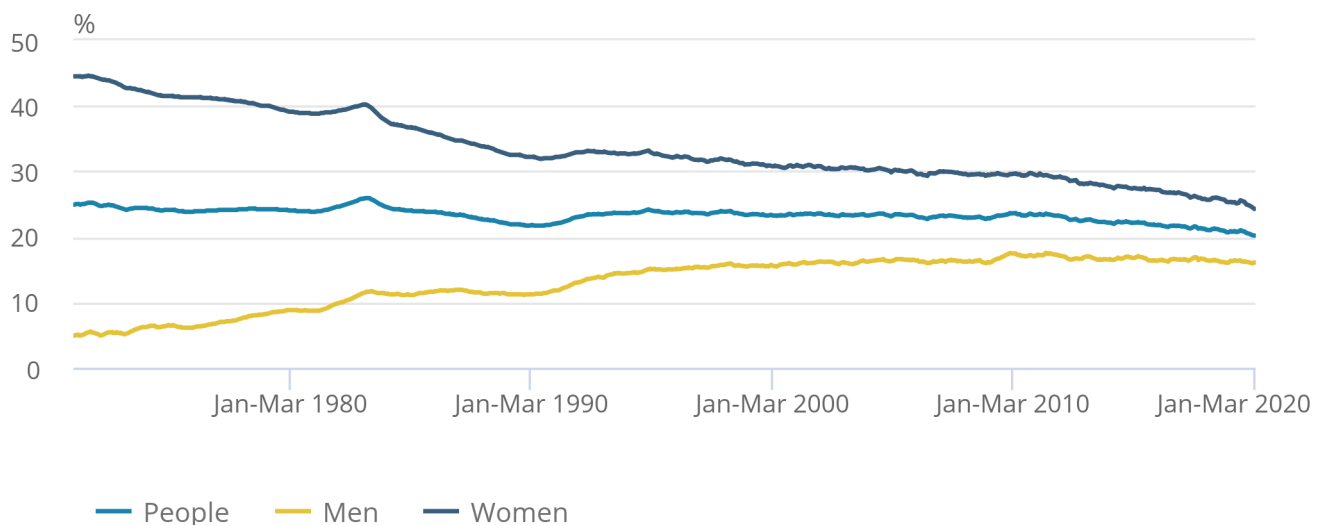
7 . Economic inactivity

Figure 4: The overall inactivity rate for people aged between 16 and 64 years was a joint record low of 20.2%, down 0.7 percentage points on the year

UK economic inactivity rate (all people aged 16 to 64 years), seasonally adjusted, between January to March 1971 and January to March 2020

Figure 4: The overall inactivity rate for people aged between 16 and 64 years was a joint record low of 20.2%, down 0.7 percentage points on the year

UK economic inactivity rate (all people aged 16 to 64 years), seasonally adjusted, between January to March 1971 and January to March 2020



Source: Office for National Statistics – Labour Force Survey

[Economic inactivity](#) measures people without a job but who are not classed as unemployed because they have not been actively seeking work within the last four weeks and/or they are unable to start work within the next two weeks. Our headline measure of economic inactivity is for those aged between 16 and 64 years.

Since comparable records began in 1971, the economic inactivity rate for all people aged between 16 and 64 years has generally been falling (although it increased during recessions). This is because of a gradual fall in the economic inactivity rate for women (as seen in Figure 4). Over recent years, the economic inactivity rate for men has been relatively flat.

For people aged between 16 and 64 years, for January to March 2020:

- the estimated economic inactivity rate for all people was a joint record low of 20.2%; this is down by 0.7 percentage points on the year and down by 0.3 percentage points on the quarter
- the estimated economic inactivity rate for men was 16.1%; this is down by 0.3 percentage points on the year and largely unchanged compared with the previous quarter
- the estimated economic inactivity rate for women was a record low of 24.2%; this is down by 1.1 percentage points on the year and down by 0.6 percentage points on the quarter

Estimates for January to March 2020 show 8.35 million people aged between 16 and 64 years not in the labour force (economically inactive). This was 256,000 fewer than a year earlier and 678,000 fewer than five years earlier. The annual decrease was mainly driven by women, with 213,000 fewer than a year earlier to reach a record low of 5.04 million.

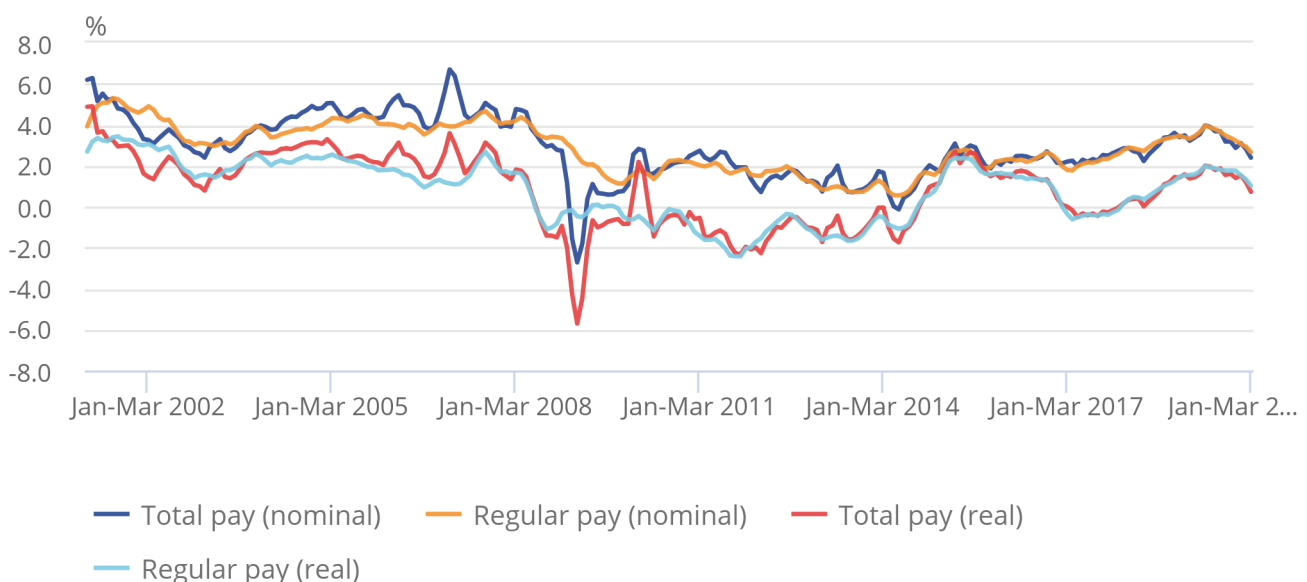
8 . Earnings growth

Figure 5: Pay growth for employees in total pay (including bonuses) is estimated to be 2.4%; this translates to 0.7% in real terms

Great Britain average weekly earnings annual growth rates, seasonally adjusted, January to March 2001 to January to March 2020

Figure 5: Pay growth for employees in total pay (including bonuses) is estimated to be 2.4%; this translates to 0.7% in real terms

Great Britain average weekly earnings annual growth rates, seasonally adjusted, January to March 2001 to January to March 2020



Source: Office for National Statistics – Monthly Wages and Salaries Survey

The earnings estimates are not just a measure of pay rises as they also reflect changes in the number of paid hours worked and changes in the structure of the workforce, for example, more high-paid jobs would have an upward effect on earnings growth rates.

The rate of pay growth trended upwards from spring 2017. In April to June 2019, it reached 4.0% for total pay and 3.9% for regular pay, the highest nominal pay growth rates since 2008. However, since then growth has slowed. In January to March 2020, it stood at 2.4% for total pay and 2.7% for regular pay.

In real terms, annual pay growth has been positive since the three months to February 2018. This means that during that period, pay has been growing faster than [inflation](#). Growth in real terms for both total pay and regular pay reached a recent peak of 2.0% in the three months to June 2019, before decreasing to 0.7% for total pay and 1.0% for regular pay in the three months to March 2020.

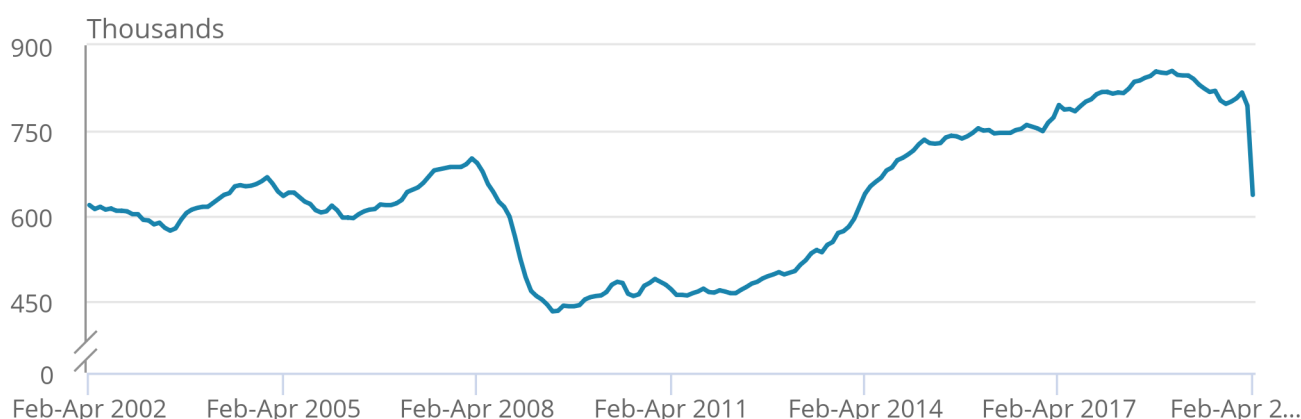
9 . Vacancies

Figure 6: February to April 2020 saw the largest quarterly decrease to the vacancies total since the current time series started in 2001

Number of vacancies in the UK, seasonally adjusted, between February to April 2002 and February to April 2020

Figure 6: February to April 2020 saw the largest quarterly decrease to the vacancies total since the current time series started in 2001

Number of vacancies in the UK, seasonally adjusted, between February to April 2002 and February to April 2020



Source: Office for National Statistics – Vacancy Survey

The estimated [number of vacancies](#) in the UK fell sharply during the recession of 2008 to 2009. Since 2012, it has generally increased, reaching a record high of 855,000 in November 2018 to January 2019. For February to April 2020, there were an estimated 637,000 vacancies in the UK; this is 170,000 fewer than in the previous quarter (November 2019 to January 2020) and 210,000 fewer than a year earlier, both of which are [statistically significant](#) changes. This is the lowest total vacancies figure since there were an estimated 617,000 in January to March 2014.

10 . Economic commentary

The coronavirus (COVID-19) pandemic has been a major shock to the UK economy. The Office for Budget Responsibility (OBR)'s three-month lockdown scenario analysis forecasts a 13.0% fall in annual gross domestic product (GDP) in 2020 and the unemployment rate to reach 10.0% by Quarter 2 2020, before gradually reducing to just below 6.0% by the end of 2021.

In the three months to March 2020, GDP fell by 2.0%, signalling the first direct impact of the coronavirus on the economy. The production sector fell by 2.1%, construction by 2.6% and the services sector by 1.9%.

The latest Labour Force Survey (LFS) estimates published today (19 May 2020) cover the period January to March 2020, and therefore remain mostly unaffected by the impact of the coronavirus. On the quarter, employment increased 211,000 to 33.14 million. Alongside official statistics from the LFS, the Office for National Statistics (ONS) and HM Revenue and Customs (HMRC) jointly published an experimental monthly [flash estimate of paid employees and their pay from Pay As You Earn Real Time Information](#). The estimates for April 2020 indicate that the number of paid employees fell by 1.2% compared with April 2019, and fell by 1.6% when compared with March 2020. The median monthly pay grew by 2.7% in March 2020, compared with the same period of the previous year. In addition, the median monthly pay for April 2020 fell by 0.9% compared with the same period of the previous year.

In addition, the latest [Vacancy Survey estimates](#) for the period February to April 2020 show that the number of vacancies decreased by 21.0% compared with the previous quarter, showing a slump in the demand for labour. The decrease of 170,000 vacancies is the largest quarterly fall in the history of the time series. The Institute for Employment Studies' (IES) analysis of the ADZUNA vacancy data shows that the overall vacancy level decreased by 59% between the second week of March and the week ending 3 May 2020.

Further evidence of the impacts of the coronavirus pandemic on the labour market are reflected in the ONS Business Impact of Coronavirus (COVID-19) Survey (BICS). The survey for the period 6 April to 19 April 2020 showed that [23.0% of businesses that responded had temporarily closed or paused trading](#). Across all industries, 28.0% of the workforce had been furloughed under the terms of the UK government's Coronavirus Job Retention Scheme, and less than 1% of the workforce was made redundant. Workers on the furlough scheme are not at work but remain employed.

Experimental LFS weekly hours data show that seasonally-adjusted actual hours worked in the main job declined in the last two weeks of March 2020. Compared with the same period in 2019, the numbers of people who were temporarily away from work, and those who worked fewer than usual hours because of economic reasons both increased, which contributed to lower actual hours worked.

The Bank of England (BoE) Monetary Policy Report (MPR) for May 2020 covers findings from the Bank/Ipsos MORI Survey, in which over half of employed respondents reported that they were employed but not currently working, or were working fewer hours, as a result of the pandemic. Most workers said that it was a result of firm closure or lower demand. The MPR also reports that the combination of lower individual productivity and disrupted supply chains is expected to cause a fall in labour productivity on a per-hour basis. It also anticipates a larger fall in productivity per head because furloughed workers are still employed but may have zero working hours. The self-employed were most likely to report working fewer hours.

Comparing various indicators shows that the impact of the coronavirus has been felt to greater extent by certain industries. The accommodation and food services activities sector recorded the largest quarterly decrease in vacancies (negative 32,000) for the period February to April 2020 and the largest proportion of workforce being furloughed (73.0%) based on BICS Wave 3 data. The accommodation and food services activities output declined by 9.5% in the three months to March 2020, based on GDP first quarterly estimates for Quarter 1 2020.

The Department for Work and Pensions (DWP)'s weekly management information on Universal Credit (UC) "declarations" (claims) and advances also provide an indication of performance of the labour market in terms of the unemployed and those in employment who qualify for UC. The DWP reports that, since the start of the pandemic, there have been exceptional levels of demand for UC. However, not all applicants will be eligible for benefits.

The experimental Claimant Count data, which cover claims for Jobseeker's Allowance and those claimants in the UC "searching for work" conditionality, show that there was a 69.1% increase in the number of claims between March and April, taking the level to over 2 million. The IHS Markit UK Household Finance Index for April 2020 shows that the coronavirus pandemic has caused households' perceptions of employment incomes and job security to decline.

Figures released today show that [total and regular average weekly earnings growth slowed](#) to 2.4% and 2.7% respectively in the three months to March 2020. In addition, consumption and expenditure patterns as reflected through the ONS's [retail sales data in Great Britain for March 2020](#) changed. The initial impacts of the coronavirus on retail sales in March were a sharp fall in sales volume (5.1%) and strong growth in online sales as a proportion of all retailing (22.3%).

11 . Labour market data

[Summary of labour market statistics](#)

Dataset A01 | Released 19 May 2020

Estimates of employment, unemployment and other employment-related statistics for the UK.

[Employment, unemployment and economic inactivity](#)

Dataset A02 SA | Released 19 May 2020

Estimates of UK employment, unemployment and economic inactivity for people aged 16 years and over and people aged between 16 and 64 years based on the Labour Force Survey (LFS).

[Average weekly earnings](#)

Dataset EARN01 | Released 19 May April 2020 Estimates of Great Britain earnings growth based on the Monthly Wages and Salaries Survey.

[Vacancies by industry](#)

Dataset VACS02 | Released 19 May April 2020 Estimates of the number of UK job vacancies for each industry, based on a survey of businesses.

View all related data on the [related data page](#). Alternatively, [Nomis](#) provides free access to the most detailed and up-to-date UK labour market statistics from official sources.

Table 1: Labour Force Survey sampling variability
Sampling variability (95% confidence intervals) of UK Labour Force Survey estimates, January to March 2020

	Level	Sampling variability of level ¹	Change on quarter	Sampling variability of change on quarter ¹	Change on year	Sampling variability of change on year ¹
Employment (000s, aged 16 and over)	33,144	± 193	211	± 158	448	± 249
Employment rate (aged 16 to 64)	76.6	± 0.4	0.2	± 0.4	0.6	± 0.6
Average weekly hours	31.4	± 0.2	-0.5	± 0.2	-0.8	± 0.2
Unemployment (000s, aged 16 and over)	1,348	± 73	58	± 76	50	± 98
Unemployment rate (aged 16 and over)	3.9	± 0.2	0.1	± 0.2	0.1	± 0.3
Economically active (000s, aged 16 and over)	34,492	± 186	268	± 154	497	± 240
Economic activity rate (aged 16 to 64)	79.8	± 0.4	0.3	± 0.3	0.7	± 0.5
Economically inactive (000s, aged 16 to 64)	8,353	± 165	-125	± 138	-256	± 215
Economic inactivity rate (aged 16 to 64)	20.2	± 0.4	-0.3	± 0.3	-0.7	± 0.5
Redundancies (000s, aged 16 and over)	107	± 20	-2	± 28	15	± 27

Source: Office for National Statistics – Labour Force Survey

Notes

1. The sampling variability estimates are for 95% confidence intervals and are calculated on data that are not seasonally adjusted. [Back to table](#)
2. These data are part of data table A11: Labour Force Survey sampling variability, which is part of the Labour market overview, UK release. [Back to table](#)

Table 2: Summary of employee earnings, seasonally adjusted, Great Britain, January to March 2020

	Annual growth rate (estimate)	Sampling variability of growth rate ¹
Total pay (nominal)	2.4	± 0.5
Total pay (real)	0.7	
Regular pay (nominal)	2.7	± 0.5
Regular pay (real)	1.0	

Source: Office for National Statistics – Monthly Wages and Salaries Survey

Notes

1. The sampling variability estimates are for 95% confidence intervals (where we are 95% certain the true value lies within the specified range) and are calculated on not seasonally adjusted data for single month growth rates for the 12 months from January to December 2014. It is not possible to calculate confidence intervals for growth rates in real terms. [Back to table](#)

12 . Glossary

Average weekly earnings

[Average weekly earnings](#) measures money paid by employers to employees in Great Britain before tax and other deductions from pay. The estimates are not just a measure of pay rises as they also reflect, for example, changes in the overall structure of the workforce. More high-paid jobs in the economy would have an upward effect on the earnings growth rate.

Economic inactivity

People not in the labour force (also known as [economically inactive](#)) are not in employment but do not meet the internationally accepted definition of unemployment because they have not been seeking work within the last four weeks and/or they are unable to start work in the next two weeks. The economic inactivity rate is the proportion of people aged between 16 and 64 years who are not in the labour force.

Employment

[Employment](#) measures the number of people in paid work or who had a job that they were temporarily away from (for example, because they were on holiday or off sick). This differs from the number of jobs because some people have more than one job. The employment rate is the proportion of people aged between 16 and 64 years who are in employment. A more detailed explanation is available in our [guide to labour market statistics](#).

Unemployment

[Unemployment](#) measures people without a job who have been actively seeking work within the last four weeks and are available to start work within the next two weeks. The unemployment rate is not the proportion of the total population who are unemployed. It is the proportion of the economically active population (those in work plus those seeking and available to work) who are unemployed.

Vacancies

[Vacancies](#) are defined as positions for which employers are actively seeking recruits from outside their business or organisation. The estimates are based on the Vacancy Survey; this is a survey of businesses designed to provide estimates of the stock of vacancies across the economy, excluding agriculture, forestry and fishing (a small sector for which the collection of estimates would not be practical).

A more detailed [glossary](#) is available.

13 . Measuring the data

Coronavirus (COVID-19)

In response to the developing coronavirus (COVID-19) pandemic, we are working to ensure that we continue to publish economic statistics. For more information, please see [COVID-19 and the production of statistics](#).

We have reviewed all publications and data published as part of the labour market release in response to the coronavirus pandemic. This has led to the [postponement of some publications and datasets](#) to ensure that we can continue to publish our main labour market data. This will protect the delivery and quality of our remaining outputs as well as ensuring we can respond to new demands as a direct result of the coronavirus.

For more information on how labour market data sources, among others, will be affected by the coronavirus pandemic, see the [statement](#) published on 27 March 2020. A further [article](#) published on 6 May 2020, detailed some of the challenges that we have faced in producing estimates at this time.

Our latest data and analysis on the impact of the coronavirus on the UK economy and population is now available on our dedicated [COVID-19 webpage](#). This will be the hub for all special coronavirus-related publications, drawing on all available data.

After EU withdrawal

As the UK leaves the EU, it is important that our statistics continue to be of high quality and are internationally comparable. During the transition period, those UK statistics that align with EU practice and rules will continue to do so in the same way as before 31 January 2020.

After the transition period, we will continue to produce our labour market statistics in line with the UK Statistics Authority's [Code of Practice for Statistics](#) and in accordance with International Labour Organization (ILO) definitions and agreed international statistical guidance.

The employment, unemployment and economic inactivity estimates rely on data collected from the LFS, a survey run by field interviewers with people across the UK every month.

The [LFS performance and quality monitoring reports](#) provide data on response rates and other quality related issues for the LFS, including breakdowns of response by LFS wave, region and question-specific response issues. The average weekly earnings and vacancies estimates rely on data collected from surveys of employers.

More quality and methodology information on strengths, limitations, appropriate uses, and how the data were created is available in the following Quality and Methodology Information (QMI) reports:

Future publication dates

Because of a public holiday in Northern Ireland, the July 2020 and July 2021 labour market publication dates have both been moved two days later. This change will ensure that users across the UK have the same access to advice from the teams who produce the statistics on the day of release. For further information, please see [Statement on changing the release dates of ONS statistics to avoid public holidays](#).

16 June 2020
16 July 2020
11 August 2020
15 September 2020
13 October 2020
10 November 2020
15 December 2020
26 January 2021
23 February 2021
23 March 2021
20 April 2021
18 May 2021
15 June 2021
15 July 2021
17 August 2021
14 September 2021
12 October 2021
16 November 2021
14 December 2021

14 . Strengths and limitations

Accuracy of the statistics: estimating and reporting uncertainty

The figures in this bulletin come from surveys, which gather information from a sample rather than from the whole population. The sample is designed to be as accurate as possible given practical limitations such as time and cost constraints. Results from sample surveys are always estimates, not precise figures. This can have an impact on how changes in the estimates should be interpreted, especially for short-term comparisons.

As the number of people available in the sample gets smaller, the variability of the estimates that we can make from that sample size gets larger. Estimates for small groups (for example, unemployed people aged between 16 and 17 years), which are based on small subsets of the Labour Force Survey (LFS) sample, are less reliable and tend to be more volatile than for larger aggregated groups (for example, the total number of unemployed people).

In general, changes in the numbers (and especially the rates) reported in this bulletin between three-month periods are small and are not usually greater than the level that can be explained by sampling variability. Short-term movements in reported rates should be considered alongside longer-term patterns in the series and corresponding movements in other sources to give a fuller picture.

Further information is available in [A guide to labour market statistics](#).

Where to find data about uncertainty and reliability

[Dataset A11](#) shows sampling variabilities for estimates derived from the LFS.

Sampling variability information for average weekly earnings growth rates is available from the "Sampling Variability" worksheets within [datasets EARN01](#) and [EARN03](#).

The sampling variability of the three-month average vacancies level is around plus or minus 1.5% of that level. Information on revisions is available in the [labour market statistics revisions policy](#).

15 . Related links

[Labour market in the regions of the UK](#)

Bulletin | Released 19 May 2020

Regional breakdowns of changes in UK employment, unemployment and economic inactivity.

[Young people not in education, employment or training \(NEET\)](#)

Bulletin | Released 27 February 2020

Estimates of people in the UK aged between 16 and 24 years who are NEET.

[Working and workless households in the UK](#)

Bulletin | Released 4 March 2020

The economic status of households in the UK and the people living in them, in households where at least one person is aged between 16 and 64 years.

[Earnings and employment from Pay As You Earn Real Time Information, UK: May 2020](#)

Bulletin | Released 19 May 2020

[Experimental](#) monthly estimates of paid employees and their pay from HM Revenue and Customs' (HMRC) Pay As You Earn (PAYE) Real Time Information (RTI) data.

[Coronavirus \(COVID-19\) latest data and analysis](#)

Web page | Updated as and when data become available

Latest data and analysis on the coronavirus (COVID-19) in the UK and its effect on the economy and society.

[Business Impact of Coronavirus \(COVID-19\) Survey \(BICS\) questions: 4 May 2020 to 17 May 2020](#)

Article | Released 15 May 2020

Questions from the Business Impact of Coronavirus (COVID-19) Survey relating to the coronavirus, the UK economy and society, latest indicators weekly bulletin.

[Coronavirus and self-employment in the UK](#)

Article | Released 17 April 2020

An overview of self-employment across the UK, looking at the industrial, occupational, geographic and demographic characteristics of those who are self-employed.

[Coronavirus and homeworking in the UK labour market: 2019](#)

Article | Released 24 March 2020

The extent to which different people in the labour market work from home, either on a regular or occasional basis.

[Coronavirus and key workers in the UK](#)

Article | Released 15 May 2020

Estimates of the numbers and characteristics of those who could be considered as potential "key workers" in the response to the coronavirus (COVID-19).

Index of Tables

The table below provides an index of the tables appearing in this Statistical Bulletin and it shows how these table numbers match up with the Excel spreadsheet datasets which are available on the website at:
<https://www.ons.gov.uk/employmentandlabourmarket/peopleinwork/employmentandemployeetypes/bulletins/uklabourmarket/May2020/relateddata>

Statistical Bulletin table number	Table description	Dataset
SUMMARY		
1	Labour Force Survey Summary	Dataset A02 SA
2 (*)	Labour market status by age group	Dataset A05 SA
EMPLOYMENT AND JOBS		
3	Full-time, part-time & temporary workers	Dataset EMP01 SA
4	Public and private sector employment	Dataset EMP02
4(1)	Public sector employment by industry	Dataset EMP03
5	Workforce jobs summary	Dataset JOBS01
6 (**)	Workforce jobs by industry	Dataset JOBS02
7	Actual weekly hours worked	Dataset HOUR01 SA
7(1)	Usual weekly hours worked	Dataset HOUR02 SA
NON-UK WORKERS		
8	Employment by country of birth and nationality	Dataset EMP06
8(1)	Unemployment and economic inactivity by country of birth and nationality	Dataset A12
UNEMPLOYMENT		
9	Unemployment by age and duration	Dataset UNEM01 SA
ECONOMIC ACTIVITY AND INACTIVITY		
10(*)	Economic activity by age	Dataset A05 SA
11	Economic inactivity by reason	Dataset INAC01 SA
12	Labour market and educational status of young people	Dataset A06 SA
EARNINGS		
13	Average Weekly Earnings (nominal) - Total pay	Dataset EARN01
14	Average Weekly Earnings (nominal) - Bonus pay	Dataset EARN01
15	Average Weekly Earnings (nominal) - Regular pay	Dataset EARN01
16	Average Weekly Earnings real and nominal (summary table)	Dataset EARN01
INTERNATIONAL SUMMARY		
17	International comparisons of employment and unemployment	Dataset A10
LABOUR DISPUTES		
18	Labour disputes	Dataset LABD01
VACANCIES		
19	Vacancies by size of business	Dataset VACS03
20	Vacancies and unemployment	Dataset VACS01
21	Vacancies by industry	Dataset VACS02
REDUNDANCIES		
22	Redundancies levels and rates	Dataset RED01 SA
REGIONAL SUMMARY		
23	Regional labour market summary	Dataset A07

(*) Tables 2 and 10 in the Statistical Bulletin pdf file have been amalgamated into one spreadsheet (Dataset A05 SA).

(**) Table JOBS02 provides more detail than Table 6 in the Statistical Bulletin pdf file.

The following symbols are used in the tables: p provisional, r revised, .. Not available, * suppressed due to small sample size.

The four-character identification codes appearing in the tables are the ONS references for the data series appearing in the Labour Market Statistics dataset which is available on the website at:

<https://www.ons.gov.uk/employmentandlabourmarket/peopleinwork/employmentandemployeetypes/datasets/labourmarketstatistics>

Summary of labour market statistics published on 19 May 2020

Series	Reference period	Latest estimate	Last time higher	Last time lower	Comparable data begins in
Employment level (aged 16 and over)	Jan-Mar 2020	33.144 million	Never	Dec-Feb 2020 (33.073 million)	Jan-Mar 1971
Employment rate (aged 16 to 64)	Jan-Mar 2020	76.6%	Never	Nov-Jan 2020 (76.5%)	Jan-Mar 1971
Unemployment level (aged 16 and over)	Jan-Mar 2020	1.348 million	Dec-Feb 2020 (1.364 million)	Nov-Jan 2020 (1.343 million)	Jan-Mar 1971
Unemployment rate (aged 16 and over)	Jan-Mar 2020	3.9%	Dec-Feb 2020 (4%)	Oct-Dec 2019 (3.8%)	Jan-Mar 1971
Inactivity level (aged 16 to 64)	Jan-Mar 2020	8.353 million	Dec-Feb 2020 (8.37 million)	Oct-Dec 1991 (8.317 million)	Jan-Mar 1971
Inactivity rate (aged 16 to 64)	Jan-Mar 2020	20.2%	Nov-Jan 2020 (20.4%)	Never	Jan-Mar 1971
Average Earnings (total pay - nominal)	Jan-Mar 2020	2.4%	Dec-Feb 2020 (2.8%)	Apr-Jun 2018 (2.2%)	Jan-Mar 2001
Average Earnings (regular pay - nominal)	Jan-Mar 2020	2.7%	Dec-Feb 2020 (2.9%)	Nov-Jan 2018 (2.6%)	Jan-Mar 2001
Average Earnings (total pay - real)	Jan-Mar 2020	0.7%	Dec-Feb 2020 (1.2%)	Jun-Aug 2018 (0.5%)	Jan-Mar 2001
Average Earnings (regular pay - real)	Jan-Mar 2020	1.0%	Dec-Feb 2020 (1.3%)	Jul-Sep 2018 (0.9%)	Jan-Mar 2001
Vacancies level	Feb-Apr 2020	637,000	Jan-Mar 2020 (749,000)	Jan-Mar 2014 (617,000)	Apr-Jun 2001

SUMMARY

1 Summary of headline LFS¹ indicators

United Kingdom (thousands) seasonally adjusted

	LFS household population ¹		Headline indicators					
			Employment		Unemployment		Inactivity	
			Level	Rate ²	Level	Rate ³	Level	Rate ⁴
	All aged 16 & over	All aged 16 to 64	All aged 16 & over	All aged 16 to 64	All aged 16 & over	All aged 16 & over	All aged 16 to 64	All aged 16 to 64
	MGSL	LF2O	MGRZ	LF24	MGSC	MG SX	LF2M	LF2S
People								
Jan-Mar 2018	52,929	41,220	32,343	75.6	1,417	4.2	8,679	21.1
Jan-Mar 2019	53,206	41,304	32,697	76.1	1,298	3.8	8,609	20.8
Apr-Jun 2019	53,275	41,323	32,811	76.1	1,329	3.9	8,562	20.7
Jul-Sep 2019	53,345	41,347	32,753	76.0	1,306	3.8	8,616	20.8
Oct-Dec 2019	53,415	41,371	32,934	76.5	1,290	3.8	8,478	20.5
Jan-Mar 2020	53,485	41,395	33,144	76.6	1,348	3.9	8,353	20.2
Change on quarter	70	24	211	0.2	58	0.1	-125	-0.3
Change %	0.1	0.1	0.6		4.5		-1.5	
Change on year	279	92	448	0.6	50	0.1	-256	-0.7
Change %	0.5	0.2	1.4		3.8		-3.0	
Men	MGSM	YBTG	MGSA	MGSV	MGSD	MGSY	YBSO	YBTM
Jan-Mar 2018	25,888	20,492	17,127	80.0	751	4.2	3,360	16.4
Jan-Mar 2019	26,043	20,546	17,275	80.3	701	3.9	3,354	16.3
Apr-Jun 2019	26,081	20,558	17,263	80.1	740	4.1	3,353	16.3
Jul-Sep 2019	26,119	20,571	17,298	80.3	731	4.1	3,332	16.2
Oct-Dec 2019	26,158	20,586	17,328	80.6	707	3.9	3,315	16.1
Jan-Mar 2020	26,196	20,600	17,354	80.4	745	4.1	3,310	16.1
Change on quarter	38	14	25	-0.2	37	0.2	-5	0.0
Change %	0.1	0.1	0.1		5.3		-0.2	
Change on year	152	54	79	0.1	44	0.2	-44	-0.3
Change %	0.6	0.3	0.5		6.2		-1.3	
Women	MGSN	LF2P	MG SB	LF25	MGSE	MGSZ	LF2N	LF2T
Jan-Mar 2018	27,041	20,727	15,216	71.2	667	4.2	5,319	25.7
Jan-Mar 2019	27,163	20,758	15,422	71.8	597	3.7	5,255	25.3
Apr-Jun 2019	27,194	20,766	15,548	72.1	589	3.6	5,209	25.1
Jul-Sep 2019	27,226	20,775	15,455	71.8	575	3.6	5,284	25.4
Oct-Dec 2019	27,258	20,785	15,605	72.4	582	3.6	5,162	24.8
Jan-Mar 2020	27,290	20,795	15,790	72.9	603	3.7	5,043	24.2
Change on quarter	32	10	185	0.5	21	0.1	-119	-0.6
Change %	0.1	0.0	1.2		3.5		-2.3	
Change on year	127	38	369	1.1	6	0.0	-213	-1.1
Change %	0.5	0.2	2.4		1.0		-4.0	

Source: Labour Force Survey

Labour market statistics enquiries: labour.market@ons.gov.uk

1. The Labour Force Survey (LFS) is a survey of households in the UK.

2. The headline employment rate is the number of people aged 16 to 64 in employment divided by the population aged 16 to 64.

3. The headline unemployment rate is the number of unemployed people (aged 16+) divided by the economically active population (aged 16+). The economically active population is defined as those in employment plus those who are unemployed.

4. The headline inactivity rate is the number of people aged 16 to 64 divided by the population aged 16-64.

Note on headline employment, unemployment and inactivity rates

The headline employment and inactivity rates are based on the population aged 16 to 64 but the headline unemployment rate is based on the economically active population aged 16 and over. The employment and inactivity rates for those aged 16 and over are affected by the inclusion of the retired population in the denominators and are therefore less meaningful than the rates for those aged from 16 to 64. However, for the unemployment rate for those aged 16 and over, no such effect occurs as the denominator for the unemployment rate is the economically active population which only includes people in work or actively seeking and able to work.

Note on headline employment, unemployment and inactivity levels

The headline employment and unemployment levels are for those aged 16 and over; they measure all people in work or actively seeking and able to work. However, the headline inactivity level is for those aged 16 to 64. The inactivity rate for those aged 16 and over is less meaningful as it includes elderly people who have retired from the labour force.

SUMMARY

2(1) Labour market status by age group

United Kingdom (thousands) seasonally adjusted

	Aged 16 and over						Aged 16-64					
	Employment		Unemployment		Inactivity		Employment		Unemployment		Inactivity	
	Level	Rate	Level	Rate	Level	Rate	Level	Rate	Level	Rate	Level	Rate
People	MGRZ	MGSR	MGSC	MG SX	MGSI	YBTC	LF2G	LF24	LF2I	LF2Q	LF2M	LF2S
Jan-Mar 2018	32,343	61.1	1,417	4.2	19,169	36.2	31,146	75.6	1,395	4.3	8,679	21.1
Jan-Mar 2019	32,697	61.5	1,298	3.8	19,212	36.1	31,414	76.1	1,280	3.9	8,609	20.8
Apr-Jun 2019	32,811	61.6	1,329	3.9	19,134	35.9	31,448	76.1	1,313	4.0	8,562	20.7
Jul-Sep 2019	32,753	61.4	1,306	3.8	19,286	36.2	31,443	76.0	1,288	3.9	8,616	20.8
Oct-Dec 2019	32,934	61.7	1,290	3.8	19,192	35.9	31,637	76.5	1,257	3.8	8,478	20.5
Jan-Mar 2020	33,144	62.0	1,348	3.9	18,994	35.5	31,723	76.6	1,319	4.0	8,353	20.2
Change on quarter	211	0.3	58	0.1	-198	-0.4	86	0.2	62	0.2	-125	-0.3
Change %	0.6		4.5		-1.0		0.3		5.0		-1.5	
Change on year	448	0.5	50	0.1	-218	-0.6	309	0.6	39	0.1	-256	-0.7
Change %	1.4		3.8		-1.1		1.0		3.0		-3.0	
Men	MGSA	MGSS	MGSD	MG SY	MG SJ	YBTD	YBSF	MG SV	YBSI	YBTJ	YBSO	YBTM
Jan-Mar 2018	17,127	66.2	751	4.2	8,010	30.9	16,397	80.0	735	4.3	3,360	16.4
Jan-Mar 2019	17,275	66.3	701	3.9	8,067	31.0	16,501	80.3	691	4.0	3,354	16.3
Apr-Jun 2019	17,263	66.2	740	4.1	8,077	31.0	16,473	80.1	732	4.3	3,353	16.3
Jul-Sep 2019	17,298	66.2	731	4.1	8,090	31.0	16,521	80.3	719	4.2	3,332	16.2
Oct-Dec 2019	17,328	66.2	707	3.9	8,122	31.0	16,585	80.6	686	4.0	3,315	16.1
Jan-Mar 2020	17,354	66.2	745	4.1	8,097	30.9	16,564	80.4	726	4.2	3,310	16.1
Change on quarter	25	0.0	37	0.2	-24	-0.1	-21	-0.2	40	0.2	-5	0.0
Change %	0.1		5.3		-0.3		-0.1		5.8		-0.2	
Change on year	79	-0.1	44	0.2	30	-0.1	63	0.1	35	0.2	-44	-0.3
Change %	0.5		6.2		0.4		0.4		5.1		-1.3	
Women	MGSA	MGSS	MGSD	MG SY	MG SJ	YBTD	YBSF	LF25	LF2J	LF2R	LF2N	LF2T
Jan-Mar 2018	15,216	56.3	667	4.2	11,159	41.3	14,749	71.2	660	4.3	5,319	25.7
Jan-Mar 2019	15,422	56.8	597	3.7	11,144	41.0	14,913	71.8	589	3.8	5,255	25.3
Apr-Jun 2019	15,548	57.2	589	3.6	11,057	40.7	14,975	72.1	581	3.7	5,209	25.1
Jul-Sep 2019	15,455	56.8	575	3.6	11,196	41.1	14,922	71.8	569	3.7	5,284	25.4
Oct-Dec 2019	15,605	57.3	582	3.6	11,070	40.6	15,053	72.4	571	3.7	5,162	24.8
Jan-Mar 2020	15,790	57.9	603	3.7	10,896	39.9	15,159	72.9	593	3.8	5,043	24.2
Change on quarter	185	0.6	21	0.1	-174	-0.7	107	0.5	22	0.1	-119	-0.6
Change %	1.2		3.5		-1.6		0.7		3.9		-2.3	
Change on year	369	1.1	6	0.0	-248	-1.1	246	1.1	4	0.0	-213	-1.1
Change %	2.4		1.0		-2.2		1.7		0.6		-4.0	
	Aged 16-17						Aged 18-24					
	Employment		Unemployment		Inactivity		Employment		Unemployment		Inactivity	
	Level	Rate	Level	Rate	Level	Rate	Level	Rate	Level	Rate	Level	Rate
People	YBTO	YBUA	YBVH	YBVK	YCAS	LWEX	YBTR	YBUD	YBVN	YBVO	YCAV	LWFA
Jan-Mar 2018	341	24.3	122	26.4	941	67.0	3,507	62.4	401	10.3	1,712	30.5
Jan-Mar 2019	342	24.6	81	19.2	969	69.6	3,497	63.1	385	9.9	1,661	30.0
Apr-Jun 2019	347	24.9	83	19.4	961	69.1	3,463	62.7	419	10.8	1,640	29.7
Jul-Sep 2019	345	24.7	91	21.0	961	68.8	3,364	61.1	409	10.8	1,729	31.4
Oct-Dec 2019	336	23.9	98	22.5	973	69.2	3,454	63.0	383	10.0	1,645	30.0
Jan-Mar 2020	330	23.3	105	24.2	981	69.3	3,493	64.0	410	10.5	1,559	28.5
Change on quarter	-6	-0.6	8	1.7	8	0.1	39	0.9	27	0.5	-87	-1.5
Change %	-1.9		7.9		0.8		1.1		7.1		-5.3	
Change on year	-12	-1.3	24	5.0	12	-0.3	-4	0.9	25	0.6	-102	-1.4
Change %	-3.6		29.6		1.3		-0.1		6.5		-6.2	
Men	YBTP	YBUB	YBVI	YBVL	YCAT	LWEY	YBTS	YBUE	YBVO	YBVR	YCAW	LWFB
Jan-Mar 2018	165	22.9	61	27.1	493	68.6	1,818	63.4	229	11.2	821	28.6
Jan-Mar 2019	162	22.7	45	21.8	506	71.0	1,790	63.2	236	11.7	805	28.4
Apr-Jun 2019	164	23.0	47	22.4	501	70.3	1,753	62.1	260	12.9	808	28.7
Jul-Sep 2019	157	21.9	52	24.9	508	70.9	1,737	61.8	244	12.3	829	29.5
Oct-Dec 2019	152	21.0	57	27.2	513	71.1	1,793	64.0	228	11.3	779	27.8
Jan-Mar 2020	145	20.0	63	30.2	518	71.4	1,799	64.5	230	11.3	760	27.3
Change on quarter	-7	-1.0	6	3.0	5	0.2	6	0.5	2	0.1	-19	-0.6
Change %	-4.3		11.0		1.0		0.3		1.0		-2.4	
Change on year	-17	-2.7	18	8.4	12	0.4	8	1.3	-6	-0.3	-44	-1.2
Change %	-10.4		38.9		2.3		0.5		-2.6		-5.5	
Women	YBTQ	YBUC	YBVJ	YBVM	YCAU	LWEZ	YBTT	YBUF	YBVP	YBVS	YCAW	LWFC
Jan-Mar 2018	176	25.7	61	25.8	448	65.4	1,689	61.4	171	9.2	891	32.4
Jan-Mar 2019	180	26.5	36	16.7	463	68.2	1,707	62.9	149	8.0	856	31.6
Apr-Jun 2019	183	26.9	36	16.4	460	67.8	1,711	63.3	159	8.5	832	30.8
Jul-Sep 2019	188	27.7	40	17.4	453	66.5	1,627	60.4	165	9.2	900	33.4
Oct-Dec 2019	185	26.9	41	18.2	461	67.1	1,661	61.9	155	8.5	866	32.3
Jan-Mar 2020	185	26.7	43	18.7	463	67.1	1,694	63.4	180	9.6	798	29.9
Change on quarter	0	-0.1	1	0.5	3	0.0	33	1.5	25	1.1	-68	-2.4
Change %	0.1		3.6		0.6		2.0		16.1		-7.8	
Change on year	5	0.2	7	2.0	0	-1.1	-13	0.5	31	1.6	-58	-1.7
Change %	2.6		18.0		0.1		-0.7		20.9		-6.8	

SUMMARY

2(2) Labour market status by age group

United Kingdom (thousands) seasonally adjusted

	Aged 25-34						Aged 35-49					
	Employment		Unemployment		Inactivity		Employment		Unemployment		Inactivity	
	Level	Rate	Level	Rate	Level	Rate	Level	Rate	Level	Rate	Level	Rate
People	YBTU	YBUG	YCGM	YCGP	YCAV	LWFD	YBTX	YBUJ	YCGS	YCGV	YCBB	LWFG
Jan-Mar 2018	7,437	83.5	282	3.7	1,191	13.4	10,911	85.3	297	2.6	1,586	12.4
Jan-Mar 2019	7,547	84.3	253	3.2	1,150	12.8	10,859	85.2	292	2.6	1,592	12.5
Apr-Jun 2019	7,563	84.4	268	3.4	1,129	12.6	10,853	85.2	290	2.6	1,587	12.5
Jul-Sep 2019	7,589	84.7	261	3.3	1,111	12.4	10,894	85.6	264	2.4	1,567	12.3
Oct-Dec 2019	7,614	85.0	250	3.2	1,094	12.2	10,921	85.8	271	2.4	1,531	12.0
Jan-Mar 2020	7,654	85.5	248	3.1	1,053	11.8	10,904	85.7	283	2.5	1,535	12.1
Change on quarter	40	0.5	-2	0.0	-41	-0.5	-17	-0.1	12	0.1	4	0.0
Change %	0.5		-0.8		-3.8		-0.2		4.3		0.2	
Change on year	106	1.2	-5	-0.1	-97	-1.1	45	0.5	-10	-0.1	-57	-0.4
Change %	1.4		-2.1		-8.5		0.4		-3.3		-3.6	
Men	YBTV	YBUH	YCGN	YCGQ	YCAZ	LWFE	YBTY	YBUK	YCGT	YCGW	YCBC	LWFH
Jan-Mar 2018	4,006	89.9	138	3.3	315	7.1	5,743	91.0	136	2.3	435	6.9
Jan-Mar 2019	4,048	90.1	132	3.1	313	7.0	5,733	91.1	127	2.2	432	6.9
Apr-Jun 2019	4,043	89.8	146	3.5	311	6.9	5,742	91.3	137	2.3	407	6.5
Jul-Sep 2019	4,066	90.3	143	3.4	294	6.5	5,758	91.6	124	2.1	402	6.4
Oct-Dec 2019	4,064	90.2	134	3.2	306	6.8	5,734	91.3	130	2.2	419	6.7
Jan-Mar 2020	4,070	90.3	126	3.0	309	6.9	5,715	90.9	144	2.5	425	6.8
Change on quarter	6	0.1	-8	-0.2	4	0.1	-19	-0.3	14	0.2	6	0.1
Change %	0.1		-6.2		1.2		-0.3		10.5		1.3	
Change on year	22	0.2	-5	-0.1	-4	-0.1	-18	-0.2	17	0.3	-7	-0.1
Change %	0.5		-4.2		-1.2		-0.3		13.5		-0.2	
Women	YBTV	YBUH	YCGN	YCGQ	YCAZ	LWFE	YBTY	YBUK	YCGT	YCGW	YCBC	LWFH
Jan-Mar 2018	3,431	77.1	144	4.0	876	19.7	5,168	79.8	161	3.0	1,150	17.8
Jan-Mar 2019	3,500	78.5	122	3.4	837	18.8	5,126	79.5	166	3.1	1,160	18.0
Apr-Jun 2019	3,520	78.9	122	3.3	819	18.4	5,111	79.3	153	2.9	1,181	18.3
Jul-Sep 2019	3,523	79.0	118	3.3	817	18.3	5,136	79.7	140	2.7	1,165	18.1
Oct-Dec 2019	3,550	79.7	116	3.2	788	17.7	5,187	80.5	141	2.6	1,112	17.3
Jan-Mar 2020	3,584	80.6	122	3.3	743	16.7	5,189	80.6	139	2.6	1,110	17.2
Change on quarter	34	0.8	6	0.1	-45	-1.0	2	0.1	-2	0.0	-2	0.0
Change %	1.0		5.5		-5.7		0.0		-1.5		-0.2	
Change on year	84	2.1	0	-0.1	-94	-2.1	62	1.1	-27	-0.5	-50	-0.7
Change %	2.4		0.1		-11.2		1.2		-16.1		-4.3	
	Aged 50-64						Age 65+					
	Employment		Unemployment		Inactivity		Employment		Unemployment		Inactivity	
	Level	Rate	Level	Rate	Level	Rate	Level	Rate	Level	Rate	Level	Rate
People	LF26	LF2U	LF28	LF2E	LF2A	LF2W	LFK4	LFK6	KSHU	KSHW	LFL4	LFL6
Jan-Mar 2018	8,950	71.6	293	3.2	3,249	26.0	1,197	10.2	22	1.8	10,490	89.6
Jan-Mar 2019	9,168	72.3	268	2.8	3,238	25.5	1,282	10.8	18	1.4	10,602	89.1
Apr-Jun 2019	9,222	72.5	252	2.7	3,244	25.5	1,363	11.4	16	1.2	10,572	88.5
Jul-Sep 2019	9,251	72.5	262	2.8	3,248	25.5	1,311	10.9	17	1.3	10,670	88.9
Oct-Dec 2019	9,312	72.7	255	2.7	3,234	25.3	1,297	10.8	33	2.5	10,715	89.0
Jan-Mar 2020	9,343	72.8	272	2.8	3,226	25.1	1,421	11.8	29	2.0	10,641	88.0
Change on quarter	31	0.0	18	0.2	-8	-0.1	124	1.0	-4	-0.5	-74	-0.9
Change %	0.3		6.9		-0.3		9.6		-13.3		-0.7	
Change on year	175	0.4	5	0.0	-12	-0.4	138	1.0	11	0.6	38	-1.1
Change %	1.9		1.8		-0.4		10.8		60.9		0.4	
Men	MGUX	YBUN	MGVM	MGXF	MGWB	LWFK	MGVA	YBUQ	MGVP	MGXI	MGWE	LWFN
Jan-Mar 2018	4,665	76.1	170	3.5	1,296	21.1	730	13.5	16	2.2	4,650	86.2
Jan-Mar 2019	4,769	76.7	151	3.1	1,298	20.9	774	14.1	10	1.3	4,714	85.7
Apr-Jun 2019	4,772	76.5	141	2.9	1,326	21.3	790	14.3	9	1.1	4,724	85.5
Jul-Sep 2019	4,804	76.8	156	3.2	1,299	20.7	777	14.0	12	1.6	4,758	85.8
Oct-Dec 2019	4,842	77.1	137	2.8	1,299	20.7	744	13.3	22	2.8	4,806	86.3
Jan-Mar 2020	4,836	76.8	163	3.3	1,298	20.6	790	14.1	19	2.3	4,787	85.5
Change on quarter	-6	-0.3	26	0.5	-1	-0.1	46	0.8	-3	-0.5	-19	-0.7
Change %	-0.1		18.9		-0.1		6.2		-12.0		-0.4	
Change on year	67	0.1	12	0.2	0	-0.3	16	0.0	9	1.0	74	-0.2
Change %	1.4		8.0		0.0		2.0		87.1		1.6	
Women	LF27	LF2U	LF29	LF2F	LF2B	LF2X	LFK5	LFK7	KSHV	KSHX	LFL5	LFL7
Jan-Mar 2018	4,284	67.4	122	2.8	1,953	30.7	467	7.4	6	1.4	5,840	92.5
Jan-Mar 2019	4,400	68.1	117	2.6	1,940	30.0	508	7.9	8	1.5	5,889	91.9
Apr-Jun 2019	4,451	68.7	111	2.4	1,918	29.6	573	8.9	7	1.3	5,848	91.0
Jul-Sep 2019	4,447	68.4	106	2.3	1,949	30.0	533	8.3	5	1.0	5,912	91.7
Oct-Dec 2019	4,470	68.5	118	2.6	1,935	29.7	553	8.5	12	2.1	5,908	91.3
Jan-Mar 2020	4,508	68.9	109	2.4	1,928	29.5	631	9.7	10	1.5	5,853	90.1
Change on quarter	37	0.3	-8	-0.2	-8	-0.2	78	1.2	-2	-0.5	-55	-1.1
Change %	0.8		-7.1		-0.4		14.2		-15.7		-0.9	
Change on year	108	0.7	-7	-0.2	-12	-0.6	123	1.8	2	0.0	-35	-1.8
Change %	2.5		-6.3		-0.6		24.1		26.8		-0.6	

Source: Labour Force Survey
Labour market statistics enquiries: labour.market@ons.gov.uk

EMPLOYMENT AND JOBS

3 Full-time, part-time and temporary workers

United Kingdom (thousands of people aged 16 and over) seasonally adjusted

	All in employment					Full-time and part-time workers ¹									
	Total	Employees	Self-employed	Unpaid family workers	Government sponsored training & employment programmes ²	Total people working full-time	total people working part-time	Employees working full-time	Employees working part-time	Self-employed people working full-time	Self-employed people working part-time	Total Workers with second jobs			
	1	2	3	4	5	6	7	8	9	10	11	12			
People	MGRZ	MGRN	MGRQ	MGRT	MGRW	YCBE	YCBH	YCBK	YCBN	YCBQ	YCBT	YCBW			
Jan-Mar 2018	32,343	27,425	4,751	112	55	23,739	8,604	20,392	7,034	3,294	1,456	1,138			
Jan-Mar 2019	32,697	27,593	4,930	131	42	24,110	8,586	20,566	7,027	3,496	1,434	1,112			
Apr-Jun 2019	32,811	27,669	4,959	135	49	24,107	8,704	20,610	7,059	3,443	1,516	1,138			
Jul-Sep 2019	32,753	27,620	4,955	121	57	24,213	8,540	20,662	6,959	3,499	1,456	1,136			
Oct-Dec 2019	32,934	27,726	5,027	126	55	24,416	8,517	20,792	6,934	3,571	1,455	1,165			
Jan-Mar 2020	33,144	27,964	4,999	120	62	24,453	8,692	20,910	7,054	3,484	1,515	1,227			
Change on quarter	211	238	-27	-7	7	36	174	118	120	-87	60	62			
Change %	0.6	0.9	-0.5	-5.3	12.2	0.1	2.0	0.6	1.7	-2.4	4.1	5.3			
Change on year	448	370	69	-11	19	342	105	344	26	-12	81	111			
Change %	1.4	1.3	1.4	-8.6	45.3	1.4	1.2	1.7	0.4	-0.3	5.6	10.4			
Men	MGSA	MGRN	MGRR	MGRU	MGRX	YCBF	YCBH	YCBL	YCBQ	YCBR	YCBU	YCBX			
Jan-Mar 2018	17,127	13,919	3,135	45	29	14,846	2,281	12,247	1,672	2,571	564	491			
Jan-Mar 2019	17,275	13,881	3,309	61	24	15,027	2,248	12,262	1,619	2,738	572	463			
Apr-Jun 2019	17,263	13,883	3,287	63	30	14,961	2,302	12,271	1,611	2,657	630	466			
Jul-Sep 2019	17,298	13,877	3,322	64	35	15,055	2,244	12,306	1,571	2,718	605	476			
Oct-Dec 2019	17,328	13,929	3,312	61	27	15,108	2,220	12,343	1,585	2,732	580	481			
Jan-Mar 2020	17,354	13,980	3,286	57	31	15,114	2,240	12,417	1,563	2,665	621	510			
Change on quarter	25	51	-26	-4	4	6	20	73	-22	-67	41	29			
Change %	0.1	0.4	-0.8	-6.3	13.9	0.0	0.9	0.6	-1.4	-2.4	7.1	6.0			
Change on year	79	99	-24	-3	7	87	-8	154	-55	-73	49	46			
Change %	0.5	0.7	-0.7	-5.6	28.6	0.6	-0.4	1.3	-3.4	-2.7	8.6	10.0			
Women	MGSB	MGRP	MGRS	MGRV	MGRY	YCBG	YCBJ	YCBM	YCBP	YCBS	YCBV	YCBY			
Jan-Mar 2018	15,216	13,507	1,616	67	26	8,892	6,323	8,145	5,362	724	892	647			
Jan-Mar 2019	15,422	13,712	1,621	70	19	9,084	6,338	8,304	5,408	758	863	648			
Apr-Jun 2019	15,548	13,786	1,672	72	18	9,146	6,402	8,339	5,447	786	886	671			
Jul-Sep 2019	15,455	13,743	1,633	56	22	9,159	6,296	8,356	5,387	782	851	660			
Oct-Dec 2019	15,605	13,797	1,715	65	28	9,308	6,297	8,449	5,348	839	876	684			
Jan-Mar 2020	15,790	13,984	1,714	62	31	9,339	6,452	8,493	5,490	819	895	717			
Change on quarter	185	186	-1	-3	3	31	155	44	142	-20	19	33			
Change %	1.2	1.4	-0.1	-4.4	10.5	0.3	2.5	0.5	2.7	-2.4	2.1	4.9			
Change on year	369	272	93	-8	12	255	114	190	82	61	32	69			
Change %	2.4	2.0	5.7	-11.2	66.5	2.8	1.8	2.3	1.5	8.0	3.7	10.6			
Temporary employees (reasons for temporary working)															
	Part-time workers (reasons for working part-time) ³														
	Total	Total as % of all employees	Could not find permanent job	Was not working permanent job	Did not want permanent job	Had a contract with period of training	Some other reason	Total ⁴	Could not find full-time job	Was not working full-time job	Did not want full-time job	Ill or disabled	Student or at school		
	13	14	15	16	17	18	19	20	21	22	23	24	25		
People	YCBZ	YCCG	YCCF	YCCI	YCOL	YCCO	YCCR	YCCU	YCCX	YCDA	YCCD	YCDG	YCDJ		
Jan-Mar 2018	1,588	5.8	457	28.8	446	157	528	8,490	1,011	11.9	6,057	254	1,111		
Jan-Mar 2019	1,528	5.5	387	25.3	451	131	559	8,461	931	11.0	6,092	271	1,102		
Apr-Jun 2019	1,476	5.3	361	24.4	452	133	530	8,575	914	10.7	6,215	278	1,101		
Jul-Sep 2019	1,420	5.1	351	24.7	365	135	569	8,414	865	10.3	6,122	272	1,095		
Oct-Dec 2019	1,422	5.1	361	25.4	396	113	552	8,389	918	10.9	6,058	291	1,071		
Jan-Mar 2020	1,502	5.4	414	27.6	421	115	551	8,569	903	10.5	6,196	304	1,118		
Change on quarter	80	0.2	53	2.2	25	3	-1	180	-16	-0.4	138	13	48		
Change %	5.6		14.8		6.3	2.2	-0.1	2.1	-1.7		2.3	4.5	4.4		
Change on year	-26	-0.2	27	2.2	-30	-16	-8	107	-28	-0.5	104	32	17		
Change %	-1.7		7.0		-6.6	-12.1	-1.4	1.3	-3.0		1.7	11.9	1.5		
Men	YCCA	YCCG	YCCO	YCCP	YCCQ	YCCR	YCCS	YCCV	YCCY	YCCB	YCCD	YCDH	YCDK		
Jan-Mar 2018	760	5.5	238	31.2	196	84	243	2,236	469	21.0	1,188	80	476		
Jan-Mar 2019	698	5.0	206	29.5	184	64	244	2,190	394	18.0	1,236	94	439		
Apr-Jun 2019	680	4.9	191	28.0	188	63	239	2,242	399	17.8	1,261	95	442		
Jul-Sep 2019	656	4.7	176	26.8	153	67	260	2,176	371	17.1	1,269	92	423		
Oct-Dec 2019	672	4.8	180	26.7	175	63	254	2,165	386	17.8	1,243	100	419		
Jan-Mar 2020	686	4.9	201	29.3	190	51	245	2,184	367	16.8	1,267	105	432		
Change on quarter	14	0.1	22	2.6	15	-12	-10	19	-19	-1.0	23	6	13		
Change %	2.1		12.0		8.5	-19.7	-3.9	0.9	-4.9		1.9	5.6	3.1		
Change on year	-12	-0.1	-5	-0.2	6	-13	1	-6	-28	-1.2	31	11	-7		
Change %	-1.7		-2.5		3.2	-20.8	0.3	-0.3	-7.0		2.5	11.3	-1.6		
Women	YCCB	YCCG	YCCO	YCCP	YCCQ	YCCR	YCCS	YCCV	YCCY	YCCB	YCCD	YCCF	YCDL		
Jan-Mar 2018	828	6.1	219	26.5	250	74	285	6,254	542	8.7	4,869	174	635		
Jan-Mar 2019	830	6.1	181	21.8	267	67	315	6,271	537	8.6	4,856	177	663		
Apr-Jun 2019	795	5.8	170	21.4	264	69	291	6,333	515	8.1	4,934	184	659		
Jul-Sep 2019	764	5.6	175	22.9	212	68	308	6,238	493	7.9	4,853	180	671		
Oct-Dec 2019	750	5.4	182	24.2	221	49	298	6,224	533	8.6	4,815	191	652		
Jan-Mar 2020	816	5.8	213	26.1	231	64	307	6,385	536	8.4	4,929	198	687		
Change on quarter	66	0.4	32	1.9	10	15	9	161	3	-0.2	114	7	35		
Change %	8.8		17.4		4.6	30.3	3.1	2.6	0.7		2.4	3.9	5.3		
Change on year	-14	-0.2	32	4.3	-36	-3	-8	114	-1	-0.2	74	22	24		
Change %	-1.7		17.8		-13.4	-3.9	-2.6	1.8	-0.1		1.5	12.2	3.6		

Relationship between columns: 1=2+3+4+5; 1=6+7; 2=8+9; 3=10+11; 13=15+17+18+19; 20=9+11; 14=13/2; 16=15/3; 22=21/20

1. The split between full-time and part-time employment is based on respondents' self-classification.

2. This series does not include all people on these programmes; it only includes those engaging in any form of work, work experience or work-related training.

3. These series cover Employees and Self-employed only. These series include some temporary employees recorded in columns 13 to 19.

4. The total includes those who did not give a reason for working part-time and it therefore does not equal the sum of columns 21, 23, 24 and 25.

Source: Labour Force Survey

Labour market statistics enquiries: labour.market@ons.gov.uk

EMPLOYMENT AND JOBS

4 Public and private sector employment

(first published on 17 March 2020)

United Kingdom (thousands of people aged 16 and over), seasonally adjusted									
Public sector		Private sector ¹		Total employment ²	Public sector excluding effects of major reclassifications (See Explanatory note at bottom of table)		Private sector excluding effects of major reclassifications (See Explanatory note at bottom of table)		
(000s)	(%)	(000s)	(%)	(000s)	(000s)	(%)	(000s)	(%)	
1	2	3	4	5	6	7	8	9	
G7AU	G9BZ	G7K5	G9C2	G7GO	MFY7	MFY9	MFZ2	MFY5	
Sep 17	5,476	17.1	26,618	82.9	32,094	5,219	16.3	26,875	83.7
Dec 17	5,343	16.6	26,898	83.4	32,241	5,224	16.2	27,017	83.8
Mar 18	5,351	16.5	27,038	83.5	32,389	5,233	16.2	27,156	83.8
Jun 18	5,352	16.5	27,056	83.5	32,408	5,247	16.2	27,161	83.8
Sep 18	5,345	16.5	27,147	83.5	32,492	5,257	16.2	27,235	83.8
Dec 18	5,359	16.4	27,355	83.6	32,714	5,271 r	16.1	27,443 r	83.9
Mar 19	5,376	16.4	27,370	83.6	32,746	5,287	16.1	27,459	83.9
Jun 19	5,398	16.5	27,379	83.5	32,777	5,307	16.2	27,470	83.8
Sep 19	5,423 r	16.5	27,378 r	83.5	32,801	5,336 r	16.3	27,465 r	83.7
Dec 19	5,438	16.5	27,547	83.5	32,985	5,349	16.2	27,636	83.8
Change on quarter	15	0.0	169	0.0	184	13	-0.1	171	0.1
Change %	0.3	-	0.6	-	0.6	0.2	-	0.6	-
Change on year	79	0.1	192	-0.1	271	78	0.1	193	-0.1
Change %	1.5	-	0.7	-	0.8	1.5	-	0.7	-

Enquiries 01633 455400

Source: Labour Force Survey (LFS) and returns from public sector organisations

Relationship between columns: 2 = 1/5*100; 3 = 5-1; 4 = 3/5*100, 5=6+8

See footnotes under table 4(1)

4(1) Public sector employment by industry

(first published on 17 March 2020)

United Kingdom (thousands of people aged 16 and over), seasonally adjusted

	Construction	HM Forces ³	Police (including civilians)	Public administration	Of which: Civil Service ⁴	Education	National Health Service	Other health and social work	Other (including financial corporations)	Total public sector employment ⁵
	1	2	3	4	5	6	7	8	9	10
	G7ER	G7EU	G7EX	G7F2	G7D6	G7F5	G7FG	G7FJ	G7FM	G7AU
Sep 17	39	155	245	1,016	423	1,499	1,628	273	621	5,476
Dec 17	38	155	246	1,019	427	1,495	1,639	231	521	5,343
Mar 18	35	155	246	1,024	430	1,498	1,642	229	524	5,351
Jun 18	35	153	247	1,029	431	1,501	1,650	222	516	5,352
Sep 18	35	153	247	1,033	436	1,495	1,662	216	506	5,345
Dec 18	35	151	247	1,040	440	1,496 r	1,670 r	215	504	5,359
Mar 19	36	153	249	1,051	446	1,494	1,683	215	499	5,376
Jun 19	36	152	249	1,054	448	1,496	1,696	215	500	5,398
Sep 19	35 r	153	252 r	1,056	451	1,497 r	1,711 r	214 r	505	5,423
Dec 19	35	153	252	1,065	453	1,493	1,725	213	501	5,438
Change on quarter	0	0	0	9	2	-4	14	-1	-4	15
Change %	0.0	0.0	0.0	0.9	0.4	-0.3	0.8	-0.5	-0.8	0.3
Change on year	0	2	5	25	13	-3	55	-2	-3	79
Change %	0.0	1.3	2.0	2.4	3.0	-0.2	3.3	-0.9	-0.6	1.5

Enquiries 01633 455400

Source: returns from public sector organisations

Explanatory Note: The public and private sector employment series have been affected by a number of major reclassifications where bodies employing large numbers of people have moved between the public and private sectors. These major reclassifications are as follows:

Further Education corporations and Sixth Form College corporations in England are included in the private sector from June 2012 but in the public sector for earlier time periods.

Royal Mail plc is included in the private sector from December 2013 but in the public sector for earlier time periods.

Lloyds Banking Group plc is included in the public sector from December 2008 to December 2013 but in the private sector for earlier and later time periods.

Royal Bank of Scotland plc is included in the public sector from December 2008 but in the private sector for earlier time periods.

Network Rail is included in the private sector before December 2002. From December 2002 onwards it is included in the public sector (except for the period from June 2003 to March 2004, when it is included in the private sector).

Northern Rock is included in the public sector from December 2007 until December 2011 but in the private sector for earlier and later time periods.

Bradford and Bingley is included in the public sector from September 2008 but in the private sector for earlier time periods.

Welsh Further Education colleges are included in the private sector from March 2015 but in the public sector for earlier time periods.

Housing associations in England are included in the public sector between September 2008 and September 2017; they are in the private sector for earlier and later time periods.

Housing associations in Scotland are included in the public sector from September 2001 until June 2018; they are included in the private sector for earlier and later time periods.

Housing associations in Wales are included in the private sector from June 2018; they are included in the public sector for earlier time periods.

Housing associations in Northern Ireland are included in the public sector back to the start of the time series in March 1999.

The series shown at Table 4 (in columns 6 to 9) for public and private sector employment excluding the effects of major reclassifications show all of the above mentioned bodies included in the private sector for all time periods and excluded from the public sector for all time periods. When using figures from this table, the latest estimate of the number of people employed in the public and private sectors should be taken from columns 1 and 3 respectively. However the quarterly and annual changes in employment shown in these columns are affected by reclassifications. Figures from columns 6 and 8 should be used for assessments of the recent underlying changes in public and private sector employment. The changes in employment shown in these columns are measured on a consistent basis to remove the effect of major reclassifications.

1. Estimated as the difference between LFS total employment and the data from public sector organisations.

2. LFS employment data for March refer to February-April, June refers to May-July, September refers to August-October and December refers to November-January.

3. This series excludes locally engaged staff stationed outside the United Kingdom.

EMPLOYMENT AND JOBS

5 Workforce jobs

(first published on 17 March 2020)

United Kingdom (thousands), seasonally adjusted

	Workforce jobs	Employee jobs	Self-employment jobs ¹	HM Forces	Government-supported trainees ¹
	1	2	3	4	5
	DYDC	BCAJ	DYZN	LQJX	LOJU
Dec 17	34,874	30,206	4,481	155	31
Mar 18	34,975	30,293	4,500	154	28
Jun 18	35,012	30,295	4,537	153	28
Sep 18	35,101	30,444	4,481	153	23
Dec 18	35,291	30,530	4,589	152	21
Mar 19	35,542	30,705	4,658	153	27
Jun 19	35,676	30,810	4,673	152	41
Sep 19 (r)	35,764	30,965	4,618	153	29
Dec 19 (p)	35,832	30,952	4,692	153	35
Change on quarter	67	-13	74	0	6
Change %	0.2	0.0	1.6	-0.1	21.0
Change on year	541	423	103	1	14
Change %	1.5	1.4	2.2	0.9	64.2

Relationship between columns: 1=2+3+4+5

See footnotes under table 6

6 Workforce jobs by industry

(first published on 17 March 2020)

Standard Industrial Classification (2007)

United Kingdom (thousands), seasonally adjusted

SIC 2007 sections	All jobs A-T	Agriculture, forestry & fishing A	Mining & quarrying B	Manufacturing C	Electricity, gas, steam & air conditioning supply D	Water supply, sewerage, waste & remediation activities E	Construction F	Wholesale & retail trade; repair of motor vehicles and motor cycles G	Transport & storage H	Accommodation & food service activities I	Information & communication J
	DYDC	JWR5	JWR6	JWR7	JWR8	JWR9	JWS2	JWS3	JWS4	JWS5	JWS6
Dec 17	34,874	422	59	2,697	144	228	2,330	4,994	1,690	2,353	1,461
Mar 18	34,975	413	62	2,697	147	226	2,315	4,996	1,696	2,398	1,478
Jun 18	35,012	407	63	2,713	150	227	2,310	4,997	1,733	2,432	1,478
Sep 18	35,101	410	61	2,695	154	227	2,322	4,998	1,741	2,419	1,462
Dec 18	35,291	375	59	2,686	149	231	2,343	5,000	1,799	2,452	1,480
Mar 19	35,542	386	60	2,717	143	241	2,344	5,017	1,784	2,456	1,508
Jun 19	35,676	391	58	2,709	145	243	2,305	5,010	1,825	2,495	1,513
Sep 19 (r)	35,764	408	57	2,717	144	246	2,265	4,979	1,805	2,492	1,524
Dec 19 (p)	35,832	411	58	2,704	154	241	2,310	4,967	1,799	2,513	1,536
Change on quarter	67	3	1	-13	10	-5	44	-12	-6	21	11
Change %	0.2	0.7	2.0	-0.5	7.2	-2.0	2.0	-0.2	-0.3	0.8	0.7
Change on year	541	36	0	18	5	10	-34	-33	1	61	56
Change %	1.5	9.7	-0.1	0.7	3.3	4.3	-1.4	-0.7	0.0	2.5	3.7

SIC 2007 sections	Financial & insurance activities K	Real estate activities L	Professional scientific & technical activities M	Administrative & support service activities N	Public admin & defence; compulsory social security ² O	Education P	Human health & social work activities Q	Arts, entertainment & recreation R	Other service activities S	People employed by households, etc. T	Total services G-T
	JWS7	JWS8	JWS9	JWT2	JWT3	JWT4	JWT5	JWT6	JWT7	KW78	JWT8
Dec 17	1,114	589	3,028	3,018	1,482	2,917	4,358	1,019	914	56	28,993
Mar 18	1,125	591	3,031	3,014	1,486	2,939	4,359	1,006	937	59	29,115
Jun 18	1,111	564	3,037	3,030	1,493	2,935	4,335	1,005	925	68	29,143
Sep 18	1,123	587	3,093	3,046	1,495	2,937	4,350	1,000	919	60	29,231
Dec 18	1,118	597	3,143	3,031	1,506	2,954	4,359	1,014	947	49	29,448
Mar 19	1,126	582	3,210	3,036	1,513	2,963	4,413	1,026	960	59	29,652
Jun 19	1,123	593	3,251	3,042	1,511	2,952	4,463	1,016	967	63	29,826
Sep 19 (r)	1,128	627	3,247	3,062	1,523	2,971	4,491	1,026	994	56	29,927
Dec 19 (p)	1,127	659	3,225	3,042	1,531	2,981	4,477	1,035	1,008	54	29,954
Change on quarter	-2	31	-22	-19	8	10	-15	9	14	-2	26
Change %	-0.2	5.0	-0.7	-0.6	0.5	0.3	-0.3	0.9	1.4	-3.3	0.1
Change on year	9	62	83	11	25	27	117	21	61	5	505
Change %	0.8	10.3	2.6	0.4	1.7	0.9	2.7	2.1	6.5	10.6	1.7

Workforce jobs enquiries 01633 456776

Sources: Employer surveys, Labour Force Survey and administrative sources

EMPLOYMENT AND JOBS

7 Actual weekly hours worked

United Kingdom (hours worked by people aged 16 and over), seasonally adjusted

People	Average (mean) actual weekly hours worked				
	Total weekly hours (millions) ¹²	All workers ¹	Full-time workers ³	Part-time workers ³	Second Jobs
	YBUS	YBUV	YBUY	YBVB	YBVE
Jan-Mar 2018	1,031.9	31.9	37.1	16.4	10.0
Jan-Mar 2019	1,052.9	32.2	37.5	16.3	9.6
Apr-Jun 2019	1,052.6	32.1	37.3	16.3	9.6
Jul-Sep 2019	1,052.6	32.1	37.3	16.3	10.0
Oct-Dec 2019	1,050.1	31.9	36.9	16.2	9.8
Jan-Mar 2020	1,040.6	31.4	36.5	15.9	9.7
Change on quarter	-9.5	-0.5	-0.5	-0.3	0.0
Change %	-0.9	-1.5	-1.2	-1.9	-0.5
Change on year	-12.4	-0.8	-1.0	-0.4	0.1
Change %	-1.2	-2.5	-2.7	-2.4	1.2
Men	YBUT	YBUW	YBUZ	YBVC	YBVF
Jan-Mar 2018	621.1	36.3	39.0	16.1	10.9
Jan-Mar 2019	631.0	36.5	39.2	16.2	10.8
Apr-Jun 2019	625.9	36.3	39.0	16.3	10.4
Jul-Sep 2019	627.7	36.3	39.0	16.2	10.5
Oct-Dec 2019	623.2	36.0	38.6	16.1	10.6
Jan-Mar 2020	615.0	35.4	38.0	15.6	10.7
Change on quarter	-8.2	-0.5	-0.5	-0.5	0.1
Change %	-1.3	-1.5	-1.4	-3.0	1.0
Change on year	-16.0	-1.1	-1.2	-0.7	-0.1
Change %	-2.5	-3.0	-3.1	-4.1	-1.3
Women	YBUU	YBUX	YBVA	YBVD	YBVG
Jan-Mar 2018	410.8	27.0	33.9	16.4	9.2
Jan-Mar 2019	422.0	27.4	34.5	16.3	8.7
Apr-Jun 2019	426.7	27.4	34.6	16.3	9.0
Jul-Sep 2019	425.0	27.5	34.5	16.4	9.6
Oct-Dec 2019	426.9	27.4	34.2	16.2	9.2
Jan-Mar 2020	425.6	27.0	33.9	16.0	9.0
Change on quarter	-1.3	-0.4	-0.3	-0.3	-0.2
Change %	-0.3	-1.5	-1.0	-1.6	-1.8
Change on year	3.6	-0.4	-0.6	-0.3	0.3
Change %	0.9	-1.5	-1.8	-1.8	3.4

Source: Labour Force Survey

Labour market statistics enquiries: labour.market@ons.gov.uk

1 Main and second job

2 Total actual weekly hours worked including paid and unpaid overtime.

3 Main job only. The split between full-time and part-time employment is based on respondents' self-classification.

7 (1) Usual weekly hours of work¹

United Kingdom, seasonally adjusted

	All in Employment (%)			Employees (%)			Self-Employed (%)		
	People	Men	Women	People	Men	Women	People	Men	Women
Jan-Mar 2019									
Less than 6 Hours	1.4	0.9	1.9	1.0	0.6	1.3	3.2	1.9	5.9
6 up to 15 hours	6.2	3.3	9.5	5.7	2.9	8.5	8.8	4.6	17.4
16 up to 30 hours	20.1	10.5	30.8	19.6	9.0	30.3	23.0	16.5	36.2
31 up to 45 hours	53.7	59.3	47.5	56.6	62.9	50.2	38.1	44.4	25.2
Over 45 hours	18.6	26.0	10.2	17.2	24.6	9.7	26.9	32.6	15.4
Total (thousands)	32,697	17,275	15,422	27,593	13,881	13,712	4,930	3,309	1,621
Oct-Dec 2019									
Less than 6 Hours	1.4	0.8	2.0	1.0	0.6	1.4	2.9	1.5	5.7
6 up to 15 hours	6.3	3.5	9.4	5.7	3.0	8.4	8.9	4.9	16.7
16 up to 30 hours	19.3	9.8	29.8	18.7	8.4	29.2	22.6	15.6	36.2
31 up to 45 hours	54.7	60.6	48.2	57.5	64.1	50.9	39.8	46.2	27.4
Over 45 hours	18.3	25.3	10.5	17.0	23.9	10.1	25.8	31.9	14.0
Total (thousands)	32,934	17,328	15,605	27,726	13,929	13,797	5,027	3,312	1,715
Jan-Mar 2020									
Less than 6 Hours	1.5	1.1	2.0	1.1	0.7	1.5	3.4	2.1	5.9
6 up to 15 hours	6.4	3.4	9.8	5.8	2.9	8.7	9.1	4.7	17.5
16 up to 30 hours	19.2	9.6	29.6	18.7	8.2	29.1	22.2	15.9	34.2
31 up to 45 hours	55.0	61.4	47.9	57.8	65.0	50.5	40.0	46.8	26.9
Over 45 hours	17.9	24.5	10.6	16.6	23.2	10.1	25.4	30.5	15.5
Total (thousands)	33,144	17,354	15,790	27,964	13,980	13,984	4,999	3,286	1,714

1 Total usual weekly hours worked by people aged 16 and over in main job including paid and unpaid overtime.

Source: Labour Force Survey

Labour market statistics enquiries: labour.market@ons.gov.uk

NON-UK WORKERS

8(1) Employment levels and rates by country of birth and nationality

United Kingdom (thousands of people aged 16 and over) not seasonally adjusted																			
Europe										Africa			Asia			America and Oceania			
European Union (EU)																			
Total ¹	UK	Non UK	Total Europe	Total EU (EU27) ²	EU14 ³	EU8 ⁴	EU2 ⁵	Other EU ⁶	Other Europe (not in EU)	Total Africa	Of which: South Africa	Total Asia	Of which: India	Of which: Pakistan and Bangladesh	Total America and Oceania	Of which: USA	Of which: Australia and New Zealand	Total Non-EU ⁷	
Levels (aged 16 and over)																			
Country of birth levels	MGTM	JF6F	JF6G	FSC2	EQ4Q	JJR3	JJR5	EQ4R	FSC3	FSC4	FSC5	JJS3	FSD6	JJS7	JJS9	FSC7	JJR7	JJS5	EQ4S
Jan-Mar 2018	32,277	26,659	5,615	2,571	2,362	1,029	954	345	34	208	883	178	1,523	474	352	639	112	148	3,253
Jan-Mar 2019	32,641	26,838	5,796	2,666	2,420	994	947	438	41	246	933	200	1,536	452	366	662	108	139	3,376
Apr-Jun 2019	32,752	26,967	5,777	2,692	2,438	1,019	971	407	41	254	923	198	1,504	475	387	658	105	167	3,339
Jul-Sep 2019	32,802	27,028	5,770	2,630	2,368	1,020	953	356	40	261	962	176	1,532	483	373	646	93	166	3,401
Oct-Dec 2019	32,983	27,171	5,809	2,704	2,436	1,026	970	400	40	269	937	171	1,544	490	373	624	95	169	3,373
Jan-Mar 2020	33,113	27,244	5,861	2,736	2,457	1,044	962	413	38	279	927	185	1,573	523	359	626	93	167	3,404
Change on year	472	405	65	70	37	50	15	-24	-3	33	-6	-15	37	71	-6	-36	-15	28	28
Change %	1.4	1.5	1.1	2.6	1.5	5.0	1.6	-5.5	-7.9	13.2	-0.6	-7.3	2.4	15.7	-1.8	-5.4	-13.7	20.4	0.8
Country of birth rates																			
LF9D	LFM6	LFM7	FSD5	EQ4Y	LFM8	LFM9	EQ4Z	FSD6	FSD7	FSD8	LFN4	FSD9	LFN6	LFN7	FSE2	LFN2	LFN5	EQ52	
Jan-Mar 2018	75.4	75.8	73.8	80.6	81.9	79.0	85.4	82.1	73.8	68.1	71.6	81.3	64.4	77.3	56.3	77.5	77.3	81.7	68.7
Jan-Mar 2019	75.9	76.3	74.6	81.8	82.8	80.1	85.1	84.6	79.1	72.7	73.1	88.2	64.6	75.3	57.6	77.8	78.4	84.7	69.7
Apr-Jun 2019	76.0	76.3	74.6	82.2	83.1	80.2	85.2	86.2	78.3	74.4	73.2	87.4	63.4	75.5	59.0	78.6	73.9	87.7	69.3
Jul-Sep 2019	76.2	76.3	75.6	82.5	83.3	80.6	86.1	84.6	76.0	76.1	74.9	84.9	65.4	77.0	57.9	79.2	78.2	88.8	71.0
Oct-Dec 2019	76.6	76.8	75.6	82.0	83.1	80.9	85.7	82.7	78.0	73.5	74.2	82.3	65.7	78.7	56.7	80.2	79.1	87.8	70.9
Jan-Mar 2020	76.6	76.6	76.6	82.5	83.4	81.2	85.7	84.2	78.8	75.1	75.6	87.2	67.0	79.0	56.6	81.4	76.4	88.0	72.2
Change on year	0.6	0.4	1.9	0.7	0.6	1.1	0.6	-0.4	-0.3	2.4	2.5	-1.0	2.5	3.6	-1.0	3.6	-2.0	3.3	2.5
Nationality levels																			
MGTM	JF6H	JF6I	FSC8	EQ4U	JJR4	JJR6	EQ4V	FSC9	FSCE	FSD2	JJS4	FSD3	JJS8	JJT2	FSD4	JJR8	JJS6	EQ4W	
Jan-Mar 2018	32,277	28,753	3,520	2,364	2,283	1,003	916	353	11	80	273	59	553	187	98	330	97	97	1,237
Jan-Mar 2019	32,641	28,943	3,698	2,513	2,381	1,018	925	423	16	132	273	71	597	182	115	315	101	75	1,317
Apr-Jun 2019	32,752	29,084	3,661	2,490	2,368	1,019	952	375	22	122	289	63	567	187	121	314	78	95	1,292
Jul-Sep 2019	32,802	29,209	3,589	2,367	2,238	981	903	333	21	129	297	56	599	210	126	326	68	107	1,351
Oct-Dec 2019	32,983	29,325	3,654	2,439	2,310	994	931	367	17	129	298	68	602	199	126	316	75	107	1,344
Jan-Mar 2020	33,113	29,405	3,698	2,467	2,341	1,018	921	386	16	126	296	65	610	217	112	325	70	112	1,357
Change on year	472	462	0	-45	-40	1	-4	-36	0	-6	23	-7	13	35	-3	10	-31	37	40
Change %	1.4	1.6	0.0	-1.8	-1.7	0.1	-0.4	-8.6	-1.4	-4.3	8.2	-9.3	2.2	19.0	-2.7	3.2	-30.8	48.9	3.0
Nationality rates																			
LF9D	LFN8	LFN9	FSE3	EQ54	LFO2	LFO3	EQ55	FSE4	FSE5	FSE6	LFO6	FSE7	LFO8	LFO9	FSE8	LFO4	LFO7	EQ56	
Jan-Mar 2018	75.4	75.6	74.1	80.8	81.9	79.5	85.1	82.8	50.7	57.2	66.9	86.9	56.2	72.9	53.1	76.3	74.5	81.7	62.9
Jan-Mar 2019	75.9	76.1	75.3	82.1	82.7	79.9	85.0	84.9	75.0	72.9	68.8	91.4	57.2	70.6	50.9	76.9	78.3	82.7	64.8
Apr-Jun 2019	76.0	76.1	75.0	82.5	83.3	80.8	85.0	85.9	83.7	69.5	70.7	90.2	54.3	69.3	53.8	76.8	73.1	86.3	63.4
Jul-Sep 2019	76.2	76.2	76.2	82.5	82.8	80.3	85.5	83.5	83.7	76.3	71.8	87.1	59.4	73.1	55.4	78.1	74.2	92.0	67.2
Oct-Dec 2019	76.6	76.7	76.0	81.9	82.4	80.3	85.4	81.0	80.0	73.4	69.0	85.8	60.3	74.6	55.2	78.5	77.2	87.8	66.9
Jan-Mar 2020	76.6	76.6	76.8	82.4	83.0	80.7	85.4	83.8	76.7	72.3	67.3	90.6	62.7	77.6	53.4	80.2	72.8	86.8	68.1
Change on year	0.6	0.5	1.5	0.3	0.3	0.8	0.4	-1.1	1.7	-0.5	-1.5	-0.8	5.5	7.0	2.5	3.3	-5.5	4.1	3.3

Source: Labour Force Survey

1. The total series includes people who do not state their country of birth or nationality. The total levels series MGTM does not therefore equal the sum of the "UK" and "Non-UK" series.

2. This series consists of all 27 EU member states excluding the UK. This series equals the sum of EU14, EU8, EU2 and Other EU.

3. Austria, Belgium, Denmark, Finland, France, Germany, Greece, Ireland, Italy, Luxembourg, Netherlands, Portugal, Spain and Sweden.

4. Czech Republic, Estonia, Hungary, Latvia, Lithuania, Poland, Slovak Republic and Slovenia.

5. Romania and Bulgaria.

6. Cyprus, Malta and Croatia.

7. Total Non-EU equals the sum of Other Europe, Total Africa, Total Asia and Total America and Oceania.

The estimates shown in this table relate to the number of people in employment and should not be used as a proxy for flows of foreign migrants into the UK.

Labour market statistics enquiries: labour.market@ons.gov.uk

NON-UK WORKERS

8(2) Unemployment and economic inactivity levels and rates by country of birth and nationality

United Kingdom (thousands of people) not seasonally adjusted

United Kingdom (thousands of people) not seasonally adjusted															
	Unemployment (all aged 16 and over)					Economically inactive (all aged from 16 to 64)									
	Total ¹	UK	Non-UK	EU27 ²	Non-EU	Total ¹		UK		Non-UK		EU27 ²		Non-EU	
						All economically inactive	Of which: Students ³	All economically inactive	Of which: Students ³	All economically inactive	Of which: Students ³	All economically inactive	Of which: Students ³	All economically inactive	Of which: Students ³
Levels (thousands of people)															
Country of birth levels	MGTP	DSWD	DT35	DT3F	DTKB	LF9L	LF9W	DTLK	DYUP	DYUR	DYVR	DYVZ	DYWL	DYWR	DZ37
Jan-Mar 2018	1,415	1,118	297	89	208	8,739	2,452	7,065	1,919	1,665	533	428	162	1,238	371
Jan-Mar 2019	1,292	1,013	279	84	195	8,663	2,373	6,992	1,851	1,654	521	409	159	1,245	362
Apr-Jun 2019	1,296	1,015	280	74	206	8,659	2,350	7,006	1,864	1,640	485	414	159	1,226	327
Jul-Sep 2019	1,374	1,115	259	72	187	8,503	2,089	6,933	1,687	1,556	401	395	125	1,161	276
Oct-Dec 2019	1,268	1,030	237	85	152	8,450	2,223	6,844	1,769	1,596	455	403	130	1,193	325
Jan-Mar 2020	1,347	1,076	271	88	183	8,377	2,244	6,870	1,821	1,483	422	391	130	1,091	292
Change on year	55	63	-8	4	-12	-286	-129	-122	-29	-172	-99	-18	-29	-154	-70
Change %	4.3	6.2	-2.9	4.7	-6.1	-3.3	-5.4	-1.8	-1.6	-10.4	-19.0	-4.3	-18.0	-12.4	-19.5
Country of birth rates	MGUK	DT2W	DT3B	DTJG	DTKD	CRZK		DYTD		DYUT		DYWD		DYWT	
Jan-Mar 2018	4.2	4.0	5.0	3.6	6.0	21.2		20.9		22.3		15.0		26.8	
Jan-Mar 2019	3.8	3.6	4.6	3.4	5.5	21.0		20.8		21.8		14.3		26.3	
Apr-Jun 2019	3.8	3.6	4.6	2.9	5.8	21.0		20.8		21.7		14.4		26.3	
Jul-Sep 2019	4.0	4.0	4.3	3.0	5.2	20.6		20.5		20.9		14.1		25.0	
Oct-Dec 2019	3.7	3.7	3.9	3.4	4.3	20.4		20.2		21.3		14.0		25.9	
Jan-Mar 2020	3.9	3.8	4.4	3.5	5.1	20.2		20.3		19.9		13.6		23.9	
Change on year	0.1 #	0.2 #	-0.2 #	0.1 #	-0.4 #	-0.7	#	-0.5	#	-1.9	#	-0.7	#	-2.4	
Nationality levels	MGTP	DSWE	DT39	DTG9	DTKC	LF9L	LF9W	DYTC	DYUQ	DYUS	DYVU	DYWA	DYWM	DYWS	DZGD
Jan-Mar 2018	1,415	1,231	183	89	95	8,739	2,452	7,695	2,057	1,035	395	410	167	625	228
Jan-Mar 2019	1,292	1,107	185	86	99	8,663	2,373	7,631	1,982	1,018	390	409	166	609	223
Apr-Jun 2019	1,296	1,110	186	71	114	8,659	2,350	7,621	1,981	1,023	366	399	162	624	204
Jul-Sep 2019	1,374	1,206	168	76	92	8,503	2,089	7,546	1,801	940	287	382	125	558	162
Oct-Dec 2019	1,268	1,102	165	87	79	8,450	2,223	7,456	1,900	976	323	398	143	578	180
Jan-Mar 2020	1,347	1,159	188	86	103	8,377	2,244	7,437	1,947	913	294	387	136	526	158
Change on year	55	52	3	0	4	-286	-129	-194	-35	-105	-96	-21	-30	-84	-65
Change %	4.3	4.7	1.8	-0.3	3.6	-3.3	-5.4	-2.5	-1.7	-10.3	-24.6	-5.2	-18.3	-13.7	-29.2
Nationality rates	MGUK	DT2Z	DT3D	DTKA	DTLH	CRZK		DYUO		DYUU		DYWE		DZ36	
Jan-Mar 2018	4.2	4.1	5.0	3.7	7.1	21.2		21.1		22.0		14.8		32.3	
Jan-Mar 2019	3.8	3.7	4.8	3.5	7.0	21.0		20.9		21.0		14.4		30.3	
Apr-Jun 2019	3.8	3.7	4.8	2.9	8.1	21.0		20.9		21.2		14.2		31.0	
Jul-Sep 2019	4.0	4.0	4.5	3.3	6.4	20.6		20.6		20.2		14.4		28.1	
Oct-Dec 2019	3.7	3.6	4.3	3.6	5.5	20.4		20.4		20.6		14.4		29.1	
Jan-Mar 2020	3.9	3.8	4.8	3.5	7.0	20.2		20.3		19.3		14.0		26.7	
Change on year	0.1 #	0.1 #	0.1 #	0.0 #	0.0 #	-0.7	#	-0.6	#	-1.7	#	-0.4	#	-3.6	

Source: Labour Force Survey

Labour market statistics enquiries: labour.market@ons.gov.uk

1. The total series includes people who do not state their country of birth or nationality. The total levels series therefore do not equal the sum of the "UK" and "Non-UK" series.
2. This series consists of all 27 EU member states excluding the UK.
3. This series consists of those people whose main reason for being economically inactive was because they were students. It does not include all students as some students will be included in the employment and unemployment estimates.

UNEMPLOYMENT

9(1) Unemployment by age and duration

United Kingdom (thousands) seasonally adjusted

	All aged 16 & over							All aged 16 - 64						
	Over 6 months up to 12 months			All over 12 months				Over 6 months up to 12 months			All over 12 months			
	All	Rate (%) ¹	Up to 6 months	6 to 12 months	12 months	% over 12 months	All over 24 months	All	Rate (%) ¹	Up to 6 months	6 to 12 months	12 months	% over 12 months	All over 24 months
	1	2	3	4	5	6	7	8	9	10	11	12	13	14
People	MGSC	MGSX	YBWF	YBWG	YBWH	YBWI	YBWL	LF2I	LF2Q	LF2Y	LF32	LF34	LF36	LF38
Jan-Mar 2018	1,417	4.2	839	220	358	25.2	194	1,395	4.3	826	215	353	25.3	193
Jan-Mar 2019	1,298	3.8	771	180	346	26.7	171	1,280	3.9	764	178	339	26.5	167
Apr-Jun 2019	1,329	3.9	793	194	342	25.7	169	1,313	4.0	785	192	336	25.6	165
Jul-Sep 2019	1,306	3.8	817	180	308	23.6	153	1,288	3.9	813	177	298	23.1	149
Oct-Dec 2019	1,290	3.8	779	220	291	22.5	163	1,257	3.8	763	210	284	22.6	155
Jan-Mar 2020	1,348	3.9	846	206	295	21.9	163	1,319	4.0	835	201	283	21.5	154
Change on quarter	58	0.1	68	-14	4	-0.7	0	62	0.2	72	-9	-1	-1.1	-1
Change %	4.5		8.7	-6.3	1.4		0.0	5.0		9.4	-4.2	-0.3		-0.5
Change on year	50	0.1	75	26	-51	-4.8	-8	39	0.1	71	23	-56	-5.0	-13
Change %	3.8		9.7	14.5	-14.8		-4.7	3.0		9.3	13.1	-16.4		-7.6
Men	MGSD	MGSY	MGYK	MGYM	MGYO	YBWJ	YBWM	YBSI	YBTJ	YBWP	YBWS	YBWW	YBWW	YBWB
Jan-Mar 2018	751	4.2	411	126	214	28.5	121	735	4.3	403	123	208	28.4	120
Jan-Mar 2019	701	3.9	386	103	212	30.3	110	691	4.0	384	102	205	29.6	107
Apr-Jun 2019	740	4.1	414	113	213	28.8	113	732	4.3	409	111	211	28.9	110
Jul-Sep 2019	731	4.1	427	105	199	27.3	105	719	4.2	426	101	192	26.7	101
Oct-Dec 2019	707	3.9	407	127	173	24.5	96	686	4.0	398	117	171	24.9	93
Jan-Mar 2020	745	4.1	459	117	169	22.7	94	726	4.2	451	114	161	22.2	89
Change on quarter	37	0.2	52	-10	-5	-1.8	-2	40	0.2	53	-3	-10	-2.7	-4
Change %	5.3		12.7	-7.7	-2.7		-2.4	5.8		13.3	-2.9	-5.7		-4.0
Change on year	44	0.2	73	14	-43	-7.6	-15	35	0.2	67	11	-44	-7.4	-19
Change %	6.2		18.9	13.8	-20.4		-14.1	5.1		17.6	11.0	-21.3		-17.3
Women	MGSE	MGSZ	MGYL	MGYN	MGYP	YBWK	YBWN	LF2J	LF2R	LF2Z	LF33	LF35	LF37	LF39
Jan-Mar 2018	667	4.2	428	95	144	21.5	73	660	4.3	423	92	145	22.0	73
Jan-Mar 2019	597	3.7	386	77	134	22.5	61	589	3.8	380	75	134	22.7	60
Apr-Jun 2019	589	3.6	379	81	129	21.8	57	581	3.7	376	81	125	21.4	54
Jul-Sep 2019	575	3.6	390	76	109	18.9	48	569	3.7	387	76	106	18.7	48
Oct-Dec 2019	582	3.6	372	94	117	20.1	67	571	3.7	365	93	113	19.8	62
Jan-Mar 2020	603	3.7	387	89	126	20.9	69	593	3.8	384	87	122	20.6	65
Change on quarter	21	0.1	16	-4	9	0.8	2	22	0.1	19	-5	9	0.7	3
Change %	3.5		4.3	-4.4	7.5		3.4	3.9		5.2	-5.9	7.8		4.8
Change on year	6	0.0	2	12	-8	-1.6	7	4	0.0	4	12	-12	-2.2	6
Change %	1.0		0.5	15.5	-6.0		12.1	0.6		1.0	15.9	-8.9		9.8
	16-17							18-24						
	Over 6 months up to 12 months			All over 12 months				Over 6 months up to 12 months			All over 12 months			
	All	Rate (%) ¹	Up to 6 months	6 to 12 months	12 months	% over 12 months	All over 24 months	All	Rate (%) ¹	Up to 6 months	6 to 12 months	12 months	% over 12 months	All over 24 months
	15	16	17	18	19	20	21	22	23	24	25	26	27	28
People	YBVH	YBVK	YBXD	YBXG	YBXJ	YBXM	YBXP	YBVN	YBVQ	YBXS	YBXV	YBXY	YBYB	YBYE
Jan-Mar 2018	122	26.4	100	17	5	4.2	*	401	10.3	272	62	67	16.7	27
Jan-Mar 2019	81	19.2	65	9	7	8.8	*	385	9.9	267	55	63	16.4	14
Apr-Jun 2019	83	19.4	65	13	5	5.8	*	419	10.8	283	62	74	17.6	18
Jul-Sep 2019	91	21.0	72	13	6	7.1	*	409	10.8	292	53	64	15.6	16
Oct-Dec 2019	98	22.5	80	14	3	3.3	*	383	10.0	256	71	56	14.6	21
Jan-Mar 2020	105	24.2	80	19	7	6.2	*	410	10.5	285	62	63	15.4	18
Change on quarter	8	1.7	0	5	3	2.9	*	27	0.5	29	-9	7	0.7	-3
Change %	7.9		-0.3	32.4	100.2		*	7.1		11.3	-12.2	12.6		-13.3
Change on year	24	5.0	15	9	-1	-2.6	*	25	0.6	17	8	0	-1.1	4
Change %	29.6		23.6	100.5	-9.2		*	6.5		6.5	14.4	-0.5		30.1
Men	YBVI	YBVL	YBXE	YBXH	YBXK	YBXN	YBXQ	YBVO	YBVR	YBXT	YBXW	YBXZ	YBYC	YBYF
Jan-Mar 2018	61	27.1	47	11	3	5.2	*	229	11.2	143	41	45	19.8	19
Jan-Mar 2019	45	21.8	36	4	5	10.9	*	236	11.7	157	37	42	17.8	10
Apr-Jun 2019	47	22.4	37	7	3	7.1	*	260	12.9	166	40	53	20.5	14
Jul-Sep 2019	52	24.9	40	7	4	8.5	*	244	12.3	162	34	48	19.5	13
Oct-Dec 2019	57	27.2	47	7	3	4.6	*	228	11.3	144	47	37	16.3	13
Jan-Mar 2020	63	30.2	51	9	3	4.3	*	230	11.3	155	38	37	16.0	8
Change on quarter	6	3.0	4	2	0	-0.2	*	2	0.1	11	-8	0	-0.3	-5
Change %	11.0		8.5	28.4	5.4		*	1.0		7.8	-18.1	-1.1		-39.7
Change on year	18	8.4	15	5	-2	-6.5	*	-6	-0.3	-2	1	-5	-1.8	-2
Change %	38.9		41.7	107.8	-44.6		*	-2.6		-1.4	3.3	-12.4		-19.3
Women	YBVJ	YBVM	YBXF	YBXI	YBXL	YBXO	YBXR	YBVP	YBVS	YBXU	YBXX	YBYA	YBYD	YBYG
Jan-Mar 2018	61	25.8	53	7	*	*	*	171	9.2	129	21	22	12.6	8
Jan-Mar 2019	36	16.7	29	5	2	6.3	*	149	8.0	111	17	21	14.3	4
Apr-Jun 2019	36	16.4	28	7	*	*	*	159	8.5	117	22	20	12.9	4
Jul-Sep 2019	40	17.4	32	6	2	5.3	*	165	9.2	130	19	16	9.9	3
Oct-Dec 2019	41	18.2	33	7	*	*	*	155	8.5	112	24	19	12.1	8
Jan-Mar 2020	43	18.7	29	10	4	8.9	*	180	9.6	130	24	26	14.5	10
Change on quarter	1	0.5	-4	3	*	*	*	25	1.1	18	0	7	2.5	2
Change %	3.6		-12.6	36.5	*	*	*	16.1		15.8	-0.8	40.0		28.9
Change on year	7	2.0	0	5	2	2.6	*	31	1.6	20	7	5	0.3	6
Change %	18.0		1.1	94.0	66.7		*	20.9		17.7	38.1	23.1		139.4

Relationship between columns: 1=3+4+5; 8=10+11+12; 15=17+18+19; 22=24+25+26.

Source: Labour Force Survey

¹Denominator = economically active for that age group.

Labour market statistics enquiries: labour.market@ons.gov.uk

UNEMPLOYMENT

9(2) Unemployment by age and duration

United Kingdom (thousands) seasonally adjusted

	25-49							50 and over						
	All	Rate(%) ¹	Up to 6 months	Over 6 and up to 12 months	All over 12 months	% over 12 months	All over 24 months	All	Rate(%) ¹	Up to 6 months	Over 6 and up to 12 months	All over 12 months	% over 12 months	All over 24 months
	1	2	3	4	5	6	7	8	9	10	11	12	13	14
People	MGVI	MGXB	YBYH	YBYK	YBYN	YBYQ	YBYT	YBVT	YBVW	YBYW	YBYZ	YBZC	YBZF	YBZI
Jan-Mar 2018	579	3.1	315	94	170	29.3	90	315	3.0	153	47	116	36.7	78
Jan-Mar 2019	546	2.9	312	76	158	28.9	89	286	2.7	127	40	118	41.4	68
Apr-Jun 2019	558	2.9	320	76	162	28.9	91	268	2.5	125	42	102	38.0	60
Jul-Sep 2019	525	2.8	314	72	139	26.5	71	280	2.6	140	42	98	35.1	65
Oct-Dec 2019	521	2.7	299	86	136	26.2	78	288	2.6	144	49	95	33.1	65
Jan-Mar 2020	531	2.8	338	74	119	22.4	68	301	2.7	143	51	107	35.4	77
Change on quarter	10	0.0	40	-12	-17	-3.8	-10	13	0.1	-1	3	11	2.3	12
Change %	1.9		13.2	-14.5	-12.8		-12.5	4.5		-0.6	5.2	11.9		17.9
Change on year	-15	-0.1	26	-2	-39	-6.5	-21	16	0.1	16	11	-12	-6.0	9
Change %	-2.7		8.4	-3.2	-24.5		-23.4	5.5		12.6	28.1	-9.9		13.3
Men	YBYF	MGXC	YBYI	YBYL	YBYO	YBYR	YBYU	YBYU	YBVX	YBYX	YBZA	YBZD	YBZG	YBZJ
Jan-Mar 2018	273	2.7	135	46	93	33.8	52	187	3.3	86	28	73	39.1	50
Jan-Mar 2019	258	2.6	131	38	89	34.6	59	161	2.8	62	23	76	47.1	40
Apr-Jun 2019	284	2.8	148	42	94	33.2	58	150	2.6	62	24	63	42.0	40
Jul-Sep 2019	267	2.6	149	35	83	31.1	46	169	2.9	76	28	64	38.1	46
Oct-Dec 2019	265	2.6	145	44	76	28.7	44	159	2.8	72	29	58	36.4	39
Jan-Mar 2020	270	2.7	171	41	58	21.5	36	182	3.1	83	28	71	39.2	51
Change on quarter	5	0.1	26	-2	-18	-7.2	-9	23	0.4	11	-1	14	2.8	12
Change %	2.0		17.7	-5.5	-23.6		-20.1	14.7		15.0	-3.4	23.4		29.8
Change on year	12	0.1	40	3	-31	-13.1	-24	21	0.3	21	5	-4	-7.9	11
Change %	4.5		30.2	8.9	-35.1		-40.1	12.9		33.2	20.4	-5.9		27.8
Women	YBYG	MGXD	YBYJ	YBYM	YBYP	YBYS	YBYV	YBYV	YBVY	YBYV	YBZB	YBZE	YBZH	YBZK
Jan-Mar 2018	305	3.4	179	49	77	25.3	38	129	2.6	67	19	43	33.2	28
Jan-Mar 2019	287	3.2	181	38	68	23.7	29	125	2.5	65	17	43	34.2	28
Apr-Jun 2019	274	3.1	172	35	67	24.6	33	119	2.3	62	18	39	32.9	20
Jul-Sep 2019	258	2.9	165	37	56	21.8	25	111	2.2	64	14	34	30.5	19
Oct-Dec 2019	257	2.9	154	42	60	23.5	33	130	2.5	72	20	37	28.9	26
Jan-Mar 2020	261	2.9	168	32	61	23.3	32	119	2.3	60	24	35	29.6	26
Change on quarter	4	0.0	14	-10	0	-0.2	-1	-10	-0.2	-12	4	-2	0.6	0
Change %	1.7		9.0	-23.7	0.7		-2.5	-7.9		-16.1	17.7	-5.9		-0.2
Change on year	-26	-0.3	-13	-6	-7	-0.4	3	-5	-0.2	-5	7	-7	-4.6	-2
Change %	-9.2		-7.4	-15.3	-10.7		10.5	-4.2		-7.0	38.5	-17.0		-7.6

Relationship between columns: 1=3+4+5; 8=10+11+12.

Source: Labour Force Survey

¹Denominator = economically active for that age group.

Labour market statistics enquiries: labour.market@ons.gov.uk

ECONOMIC ACTIVITY AND INACTIVITY

10 Economic activity by age

United Kingdom (thousands) seasonally adjusted

	All aged 16 & over	16 - 64	16 - 17	18 - 24	25 - 34	35 - 49	50 - 64	65+
Economically active	1	2	3	4	5	6	7	8
People	MGSF	LF2K	YBZL	YBZO	YBZR	YBZU	LF3A	LFK8
Jan-Mar 2018	33,760	32,541	463	3,908	7,719	11,208	9,243	1,220
Jan-Mar 2019	33,995	32,694	423	3,883	7,801	11,152	9,436	1,300
Apr-Jun 2019	34,140	32,761	430	3,882	7,831	11,143	9,475	1,379
Jul-Sep 2019	34,059	32,731	437	3,773	7,850	11,158	9,513	1,328
Oct-Dec 2019	34,223	32,894	434	3,837	7,863	11,192	9,567	1,330
Jan-Mar 2020	34,492	33,042	435	3,903	7,901	11,187	9,616	1,450
Change on quarter	268	149	1	67	38	-6	48	120
Change %	0.8	0.5	0.3	1.7	0.5	-0.1	0.5	9.0
Change on year	497	348	12	21	101	35	180	149
Change %	1.5	1.1	2.8	0.5	1.3	0.3	1.9	11.5
Men	MMSG	YBSL	YBZM	YBZP	YBZS	YBZV	YBZY	YCAE
Jan-Mar 2018	17,878	17,132	226	2,048	4,143	5,879	4,836	746
Jan-Mar 2019	17,976	17,192	207	2,026	4,179	5,860	4,920	784
Apr-Jun 2019	18,004	17,205	212	2,012	4,189	5,879	4,913	799
Jul-Sep 2019	18,029	17,240	208	1,980	4,209	5,882	4,960	790
Oct-Dec 2019	18,036	17,270	208	2,020	4,198	5,865	4,979	765
Jan-Mar 2020	18,098	17,290	208	2,029	4,196	5,859	4,999	809
Change on quarter	63	19	0	8	-3	-5	20	43
Change %	0.3	0.1	-0.2	0.4	-0.1	-0.1	0.4	5.7
Change on year	122	98	1	2	16	-1	79	25
Change %	0.7	0.6	0.3	0.1	0.4	0.0	1.6	3.1
Women	MGSF	LF2L	YBZN	YBZQ	YBZT	YBZW	LF3B	LFK9
Jan-Mar 2018	15,882	15,409	237	1,860	3,576	5,329	4,407	474
Jan-Mar 2019	16,019	15,502	216	1,856	3,622	5,292	4,516	516
Apr-Jun 2019	16,137	15,556	219	1,870	3,642	5,264	4,562	580
Jul-Sep 2019	16,030	15,491	228	1,792	3,641	5,276	4,553	538
Oct-Dec 2019	16,188	15,623	226	1,816	3,665	5,328	4,588	564
Jan-Mar 2020	16,393	15,753	227	1,875	3,706	5,328	4,617	641
Change on quarter	206	129	2	58	41	0	29	76
Change %	1.3	0.8	0.8	3.2	1.1	0.0	0.6	13.5
Change on year	375	250	11	18	84	36	101	125
Change %	2.3	1.6	5.2	1.0	2.3	0.7	2.2	24.1

Economic activity rates (%)¹

People	MGWG	LF22	YCAC	YCAJ	YCAM	YCAP	LF2C	LFL2
Jan-Mar 2018	63.8	78.9	33.0	69.5	86.6	87.6	74.0	10.4
Jan-Mar 2019	63.9	79.2	30.4	70.0	87.2	87.5	74.5	10.9
Apr-Jun 2019	64.1	79.3	30.9	70.3	87.4	87.5	74.5	11.5
Jul-Sep 2019	63.8	79.2	31.2	68.6	87.6	87.7	74.5	11.1
Oct-Dec 2019	64.1	79.5	30.8	70.0	87.8	88.0	74.7	11.0
Jan-Mar 2020	64.5	79.8	30.7	71.5	88.2	87.9	74.9	12.0
Change on quarter	0.4	0.3	-0.1	1.5	0.5	0.0	0.1	0.9
Change on year	0.6	0.7	0.3	1.4	1.1	0.4	0.4	1.1
Men	MGWH	MGSP	YCAH	YCAK	YCAN	YCAQ	MGWQ	MGWT
Jan-Mar 2018	69.1	83.6	31.4	71.4	92.9	93.1	78.9	13.8
Jan-Mar 2019	69.0	83.7	29.0	71.6	93.0	93.1	79.1	14.3
Apr-Jun 2019	69.0	83.7	29.7	71.3	93.1	93.5	78.7	14.5
Jul-Sep 2019	69.0	83.8	29.1	70.5	93.5	93.6	79.3	14.2
Oct-Dec 2019	69.0	83.9	28.9	72.2	93.2	93.3	79.3	13.7
Jan-Mar 2020	69.1	83.9	28.6	72.7	93.1	93.2	79.4	14.5
Change on quarter	0.1	0.0	-0.2	0.6	-0.1	-0.1	0.1	0.7
Change on year	0.1	0.3	-0.4	1.2	0.1	0.1	0.3	0.2
Women	MGWI	LF23	YCAI	YCAL	YCAO	YCAR	LF2D	LFL3
Jan-Mar 2018	58.7	74.3	34.6	67.6	80.3	82.2	69.3	7.5
Jan-Mar 2019	59.0	74.7	31.8	68.4	81.2	82.0	70.0	8.1
Apr-Jun 2019	59.3	74.9	32.2	69.2	81.6	81.7	70.4	9.0
Jul-Sep 2019	58.9	74.6	33.5	66.6	81.7	81.9	70.0	8.3
Oct-Dec 2019	59.4	75.2	32.9	67.7	82.3	82.7	70.3	8.7
Jan-Mar 2020	60.1	75.8	32.9	70.1	83.3	82.8	70.5	9.9
Change on quarter	0.7	0.6	0.0	2.4	1.0	0.0	0.2	1.1
Change on year	1.1	1.1	1.1	1.7	2.1	0.7	0.6	1.8

Relationship between columns: 1 = 2+8; 2 = 3+4+5+6+7.

¹ Denominator = all persons in the relevant age group.

Data source: Labour Force Survey

Labour market statistics enquiries: labour.market@ons.gov.uk

ECONOMIC ACTIVITY AND INACTIVITY

11 Economic inactivity: reasons

United Kingdom (thousands) seasonally adjusted

	Total aged 16-64		Economic inactivity by reason (aged 16 to 64)						Wanting/not wanting a job (aged 16 to 64)		
	1	2	3	4	5	6	7	8	9	10	
											Student
People	LF2M	LF63	LF65	LF67	LF69	LFL8	LF6B	LF6D	LFL9	LFM2	
Jan-Mar 2018	8,679	2,313	2,048	174	1,977	34	1,161	972	6,683	1,996	
Jan-Mar 2019	8,609	2,247	2,030	178	2,002	34	1,123	995	6,763	1,846	
Apr-Jun 2019	8,562	2,233	2,013	165	2,031	36	1,100	983	6,712	1,851	
Jul-Sep 2019	8,616	2,295	1,970	171	2,054	34	1,117	974	6,760	1,856	
Oct-Dec 2019	8,478	2,255	1,885	160	2,075	33	1,123	947	6,605	1,873	
Jan-Mar 2020	8,353	2,147	1,784	181	2,097	37	1,140	968	6,484	1,869	
Change on quarter	-125	-107	-102	20	23	4	17	21	-120	-4	
Change %	-1.5	-4.8	-5.4	12.7	1.1	10.6	1.5	2.2	-1.8	-0.2	
Change on year	-256	-100	-246	3	95	2	17	-27	-279	22	
Change %	-3.0	-4.5	-12.1	1.6	4.8	6.5	1.5	-2.7	-4.1	1.2	
Men	YBSO	BEEEX	BEAQ	BEDI	BEDL	YCFP	BEDR	BEDU	YBWA	YBWD	
Jan-Mar 2018	3,360	1,170	237	81	947	18	479	428	2,524	837	
Jan-Mar 2019	3,354	1,147	226	89	952	25	498	416	2,594	760	
Apr-Jun 2019	3,353	1,132	229	79	951	24	507	431	2,594	760	
Jul-Sep 2019	3,332	1,146	221	75	957	18	505	409	2,586	746	
Oct-Dec 2019	3,315	1,141	225	64	964	20	501	399	2,552	763	
Jan-Mar 2020	3,310	1,084	220	83	956	25	511	431	2,518	792	
Change on quarter	-5	-57	-5	19	-8	4	10	32	-34	29	
Change %	-0.2	-5.0	-2.4	29.8	-0.8	21.4	1.9	8.1	-1.3	3.8	
Change on year	-44	-63	-6	-7	4	0	13	15	-76	32	
Change %	-1.3	-5.5	-2.5	-7.4	0.4	-1.5	2.6	3.6	-2.9	4.2	
Women	LF2N	LF64	LF66	LF68	LF6A	LFM3	LF6C	LF6E	LFM4	LFM5	
Jan-Mar 2018	5,319	1,143	1,812	93	1,030	15	682	544	4,159	1,159	
Jan-Mar 2019	5,255	1,100	1,804	88	1,050	9	625	579	4,169	1,086	
Apr-Jun 2019	5,209	1,102	1,784	86	1,081	12	593	552	4,118	1,091	
Jul-Sep 2019	5,284	1,149	1,749	96	1,096	17	612	565	4,174	1,110	
Oct-Dec 2019	5,162	1,113	1,660	96	1,111	13	621	548	4,052	1,110	
Jan-Mar 2020	5,043	1,063	1,564	98	1,141	12	629	536	3,966	1,077	
Change on quarter	-119	-50	-96	1	30	-1	8	-12	-86	-33	
Change %	-2.3	-4.5	-5.8	1.4	2.7	-6.7	1.2	-2.1	-2.1	-3.0	
Change on year	-213	-37	-241	9	91	3	4	-42	-203	-10	
Change %	-4.0	-3.4	-13.3	10.7	8.7	27.8	0.7	-7.3	-4.9	-0.9	
Percentage of economically inactive aged from 16 to 64 (%)											
People	LF6V	LF6X	LF6Z	LF73	LF75	LF77	LF79	LF7B	LF7D	LF7F	
Jan-Mar 2018	100.0	26.6	23.6	2.0	22.8	0.4	13.4	11.2	77.0	23.0	
Jan-Mar 2019	100.0	26.1	23.6	2.1	23.3	0.4	13.0	11.6	78.6	21.4	
Apr-Jun 2019	100.0	26.1	23.5	1.9	23.7	0.4	12.9	11.5	78.4	21.6	
Jul-Sep 2019	100.0	26.6	22.9	2.0	23.8	0.4	13.0	11.3	78.5	21.5	
Oct-Dec 2019	100.0	26.6	22.2	1.9	24.5	0.4	13.2	11.2	77.9	22.1	
Jan-Mar 2020	100.0	25.7	21.4	2.2	25.1	0.4	13.6	11.6	77.6	22.4	
Men	BEBP	BEEH	BEEK	BEEN	BEEQ	BEET	BEEW	BEEZ	BEAS	BEGT	
Jan-Mar 2018	100.0	34.8	7.0	2.4	28.2	0.5	14.3	12.7	75.1	24.9	
Jan-Mar 2019	100.0	34.2	6.7	2.7	28.4	0.7	14.9	12.4	77.3	22.7	
Apr-Jun 2019	100.0	33.7	6.8	2.4	28.3	0.7	15.1	12.9	77.3	22.7	
Jul-Sep 2019	100.0	34.4	6.6	2.2	28.7	0.5	15.2	12.3	77.6	22.4	
Oct-Dec 2019	100.0	34.4	6.8	1.9	29.1	0.6	15.1	12.0	77.0	23.0	
Jan-Mar 2020	100.0	32.8	6.6	2.5	28.9	0.7	15.4	13.0	76.1	23.9	
Women	LF6W	LF6Y	LF72	LF74	LF76	LF78	LF7A	LF7C	LF7E	LF7G	
Jan-Mar 2018	100.0	21.5	34.1	1.7	19.4	0.3	12.8	10.2	78.2	21.8	
Jan-Mar 2019	100.0	20.9	34.3	1.7	20.0	0.2	11.9	11.0	79.3	20.7	
Apr-Jun 2019	100.0	21.1	34.2	1.6	20.7	0.2	11.4	10.6	79.1	20.9	
Jul-Sep 2019	100.0	21.7	33.1	1.8	20.7	0.3	11.6	10.7	79.0	21.0	
Oct-Dec 2019	100.0	21.6	32.2	1.9	21.5	0.2	12.0	10.6	78.5	21.5	
Jan-Mar 2020	100.0	21.1	31.0	1.9	22.6	0.2	12.5	10.6	78.6	21.4	

Relationship between columns : 1=2+3+4+5+6+7+8; 1=9+10.

Data Source: Labour Force Survey.

Labour market statistics enquiries: labour.market@ons.gov.uk

1. This series comprises those who say they would like a regular paid job, but who do not meet the internationally agreed definition of unemployment because they have not been looking for work in the last four weeks and/or they were unable to start working within two weeks.

ECONOMIC ACTIVITY AND INACTIVITY

12 Educational status, economic activity and inactivity of people aged from 16 to 24

United Kingdom (thousands) seasonally adjusted

	All aged 16 to 24				In full-time education (FTE)				Not in full-time education (FTE) ¹			
	Total	Employed	Unemployed	Economically inactive	Total	Employed ²	Unemployed ²	Economically inactive	Total	Employed	Unemployed	Economically inactive
	1	2	3	4	5	6	7	8	9	10	11	12
Levels												
People												
16-17	1,416	330	105	981	1,222	255	68	899	194	75	37	82
18-24	5,462	3,493	410	1,559	1,764	659	93	1,012	3,697	2,834	317	547
16-24	6,878	3,823	516	2,540	2,987	914	162	1,911	3,891	2,909	354	629
Men												
16-17	725	145	63	518	611	99	38	474	114	46	25	44
18-24	2,789	1,799	230	760	822	265	39	518	1,967	1,534	191	242
16-24	3,514	1,944	293	1,278	1,433	364	77	992	2,081	1,580	216	286
Women												
16-17	691	185	43	463	611	155	30	425	80	29	12	38
18-24	2,673	1,694	180	798	943	395	55	493	1,730	1,300	126	305
16-24	3,364	1,879	223	1,262	1,554	550	85	919	1,810	1,329	138	343
Changes on quarter												
People												
16-17	9	-6	8	8	10	0	4	6	0	-6	4	2
18-24	-20	39	27	-87	-21	54	17	-91	1	-14	11	5
16-24	-11	33	35	-79	-11	54	20	-85	0	-21	15	7
Men												
16-17	5	-7	6	5	5	-6	6	5	0	-1	1	0
18-24	-10	6	2	-19	-28	5	3	-36	18	1	0	17
16-24	-6	-1	9	-14	-23	-1	8	-31	17	0	0	17
Women												
16-17	5	0	1	3	5	6	-2	1	0	-5	3	2
18-24	-10	33	25	-68	7	49	14	-56	-17	-15	11	-12
16-24	-5	34	27	-65	12	54	12	-55	-17	-21	14	-10
Rates(%)³												
People												
16-17		23.3	24.2	69.3		20.9	21.1	73.6		38.7	33.0	42.3
18-24		64.0	10.5	28.5		37.4	12.4	57.3		76.6	10.1	14.8
16-24		55.6	11.9	36.9		30.6	15.0	64.0		74.7	10.8	16.2
Men												
16-17		20.0	30.2	71.4		16.3	27.7	77.5		40.0	35.0	38.4
18-24		64.5	11.3	27.3		32.2	12.7	63.1		78.0	11.1	12.3
16-24		55.3	13.1	36.4		25.4	17.4	69.2		75.9	12.0	13.7
Women												
16-17		26.7	18.7	67.1		25.4	16.3	69.6		36.7	29.7	47.8
18-24		63.4	9.6	29.9		41.9	12.2	52.3		75.1	8.8	17.6
16-24		55.9	10.6	37.5		35.4	13.4	59.1		73.4	9.4	19.0
Changes on quarter												
People												
16-17		-0.6	1.7	0.1		-0.2	0.9	-0.1		-3.1	4.1	1.1
18-24		0.9	0.5	-1.5		3.4	1.2	-4.4		-0.4	0.4	0.1
16-24		0.6	0.6	-1.1		1.9	0.9	-2.6		-0.5	0.5	0.2
Men												
16-17		-1.0	3.0	0.2		-1.1	4.0	0.2		-0.6	1.0	0.0
18-24		0.5	0.1	-0.6		1.7	0.5	-2.1		-0.7	0.0	0.8
16-24		0.1	0.3	-0.3		0.4	1.6	-1.0		-0.6	0.0	0.7
Women												
16-17		-0.1	0.5	0.0		0.7	-1.3	-0.4		-6.7	8.9	2.6
18-24		1.5	1.1	-2.4		4.9	1.7	-6.4		-0.2	0.8	-0.5
16-24		1.1	1.0	-1.9		3.3	0.6	-4.0		-0.5	1.0	-0.4

Relationship between columns: 1=5+9; 2=6+10; 3=7+11.

Source: Labour Force Survey

Labour market statistics enquiries: labour.market@ons.gov.uk

1. Not in full-time education includes people in part-time education and/or some form of training. Estimates of the number of young people who were not in employment, education or training ("NEET") cannot therefore be derived from this table. Estimates of young people who were NEET are published separately at:

<https://www.ons.gov.uk/employmentandlabourmarket/peopleinwork/unemployment/bulletins/youngpeoplenotineducationemploymentortrainingneet/latest>

2. People in full-time education are employed if they have a part-time job or unemployed if they are looking for part-time employment.

3. Denominator = all persons in the relevant age group for economically active, total in employment and economically inactive; economically active for unemployment.

EARNINGS

13 Average Weekly Earnings (nominal) - total pay¹

Standard Industrial Classification (2007)

Great Britain, seasonally adjusted

Standard Industrial Classification (2007)				Great Britain, seasonally adjusted					
Whole Economy (100%) ²				Private sector (82%) ²			Public sector (18%) ²		
	Weekly Earnings (£)	% changes year on year		Weekly Earnings (£)	% changes year on year		Weekly Earnings (£)	% changes year on year	
		Single month	3 month average ³		Single month	3 month average ³		Single month	3 month average ³
	KAB9	KAC2	KAC3	KAC4	KAC5	KAC6	KAC7	KAC8	KAC9
Mar 18	519	3.3	2.9	517	3.3	2.9	520	2.2	2.4
Jan 19	529	3.6 (r)	3.4	528	3.8	3.5	533	2.8	2.8
Feb 19	(r) 530	3.5	3.5	530	3.7	3.6	532	2.2	2.6
Mar 19	(r) 532	2.5	3.2	531	2.7	3.4	534	2.6	2.5
Apr 19	534	4.1	3.4	533	4.0	3.5 (r)	544	4.5	3.1
May 19	536	4.0	3.5	535	4.0	3.6 (r)	543	3.9	3.6
Jun 19	538	3.8	4.0	537	3.8	4.0	544	3.8	4.0
Jul 19	539	3.9	3.9	539	3.9	3.9	546	3.7	3.8
Aug 19	540	3.3	3.7	539	3.5	3.7	544	2.8	3.4
Sep 19	542	3.8	3.7	541	3.9	3.7	546	3.5	3.3
Oct 19	543	2.4	3.2	541	2.2	3.2	547	3.2	3.1
Nov 19	544	3.4	3.2	543	3.4	3.2	548	3.3	3.3
Dec 19	544	2.8	2.9	542	2.7	2.8	549	3.3	3.3
Jan 20	546	3.1	3.1	545	3.1 (r)	3.1	549	3.0	3.2
Feb 20	(r) 544	2.5	2.8	542	2.3	2.7	551	3.5	3.3
Mar 20	(p) 540	1.5	2.4	537	1.1	2.2	552	3.4	3.3

	Services, SIC 2007 sections G-S (85%) ²			Finance and business services, SIC 2007 sections K-N (21%) ²			Public sector excluding financial services (18%) ²		
	Weekly Earnings (£)	% changes year on year		Weekly Earnings (£)	% changes year on year		Weekly Earnings (£)	% changes year on year	
		Single month	3 month average ³		Single month	3 month average ³		Single month	3 month average ³
	K5BZ	K5C2	K5C3	K5C4	K5C5	K5C6	KAD8	KAD9	KAE2
Mar 18	503	3.0	2.8	661	2.1	2.8	517	2.4	2.4
Jan 19 (r)	513	3.8	3.5	679	4.5	3.9	529	2.8	2.9
Feb 19 (r)	515	3.6	3.6	677	3.6	3.7	528	2.2	2.7
Mar 19 (r)	516	2.7	3.4	680	2.9	3.6	529	2.4	2.5
Apr 19	518	4.1	3.4 (r)	686	5.1	3.8 (r)	540	4.4	3.0
May 19	520	4.0	3.6	689	5.4	4.4 (r)	539	3.9	3.6
Jun 19	522	3.9	4.0	690	5.0	5.1	538	3.5	3.9
Jul 19	523	3.9	4.0	692	4.0	4.8	543	3.8	3.7
Aug 19	524	3.3	3.7	694	4.4	4.4	539	2.7	3.3
Sep 19	526	3.8	3.7	699	5.1	4.5	542	3.5	3.4
Oct 19	527	2.2	3.1	699	3.4	4.3	543	3.2	3.2
Nov 19	528	3.5	3.2	702	4.0	4.2	545	3.4	3.4
Dec 19	528	2.9	2.9	700	3.6	3.7	545	3.4	3.3
Jan 20 (r)	530	3.3	3.2	701	3.2	3.6	545	3.1	3.3
Feb 20 (r)	528	2.6	3.0	695	2.6	3.1	547	3.6	3.4
Mar 20 (p)	524	1.6	2.5	683	0.4	2.1	548	3.6	3.4

Manufacturing, SIC 2007 section C (8%) ²				Construction, SIC 2007 section F (5%) ²				Wholesaling, retailing, hotels & restaurants, SIC 2007 sections G & I (23%) ²			
Weekly Earnings (£)		% changes year on year		Weekly Earnings (£)		% changes year on year		Weekly Earnings (£)		% changes year on year	
		Single month	3 month average ³			Single month	3 month average ³			Single month	3 month average ³
	K5CA	K5CB	K5CC	K5CD	K5CE	K5CF		K5CG	K5CH	K5CI	
Mar 18	599	3.1	2.8	613	6.3	4.7		351	2.5	2.3	
Jan 19	(r) 610	2.3	1.8	629	3.4	4.5		356	2.6	2.4	
Feb 19	(r) 607	1.9	2.0	635	5.1	4.7		358	2.4	2.6	
Mar 19	(r) 605	1.0	1.7	638	4.0	4.2		351	0.0	1.7	
Apr 19	615	2.4	1.8	653	6.7	5.3 (r)		356	1.5	1.3	
May 19	613	2.5	2.0 (r)	648	6.2	5.7 (r)		363	1.5	1.0 (r)	
Jun 19	615	2.8	2.6	648	5.4	6.1		363	3.9	2.3	
Jul 19	616	2.2	2.5	652	7.3	6.3		364	2.9	2.7	
Aug 19	620	3.2	2.8	649	4.7	5.8		365	2.6	3.1	
Sep 19	618	2.4	2.6	658	6.1	6.0		366	3.6	3.0	
Oct 19	621	2.7	2.8	650	4.1	5.0		362	0.5	2.2	
Nov 19	622	3.0	2.7	649	3.4	4.5		362	1.6	1.9	
Dec 19	620	2.3	2.7	649	1.9	3.1		362	1.2	1.1	
Jan 20	(r) 619	1.5	2.3	653	3.8	3.0		369	3.7	2.2	
Feb 20	(r) 620	2.2	2.0	651	2.5	2.7		362	1.3	2.1	
Mar 20	(p) 614	1.5	1.7	641	0.5	2.3		355	1.0	2.0	

Source: Monthly Wages & Salaries Survey

Earnings enquiries: 01633 456120

Email: earnings@ons.gov.uk

1. Estimates of total pay include bonuses but exclude arrears of pay.

2. The figure in brackets is the percentage of whole economy employment in that sector or industry for the latest time period.

3. The three month average figures are the changes in the average seasonally adjusted values for the three months ending with the relevant month compared with the same period a year earlier.

EARNINGS

14 Average Weekly Earnings (nominal) - bonus pay

Standard Industrial Classification (2007)

Great Britain, seasonally adjusted

Standard Industrial Classification (2007)				Private sector				Public sector						
Whole Economy (100%) ¹				Private sector (82%) ²				Public sector (18%) ²						
		Weekly Earnings (£)	% changes year on year				% changes year on year				% changes year on year			
			Single month	3 month average ²			Single month	3 month average ²			Single month	3 month average ²		
		KAF4	KAF5	KAF6			KAF7	KAF8	KAF9			KAG2	KAG3	KAG4
Mar 18		32	1.0	1.2			39	5.6	2.7			1	-43.3	-17.5
Jan 19	(r)	32	3.7	1.8			38	3.4	1.9			3	59.6	-20.0
Feb 19	(r)	32	5.5	4.0			39	5.5	3.9			2	9.4	9.1
Mar 19	(r)	32	1.4	3.5			38	-2.4	2.1			3	127.9	55.8
Apr 19		32	1.6	2.8 (r)			39	4.8	2.5 (r)			2	10.2	36.3 (r)
May 19		33	8.0	3.6 (r)			40	7.7	3.2 (r)			2	21.8	41.3 (r)
Jun 19		32	2.0	3.9			39	0.1	4.1			2	25.6	18.8
Jul 19		33	5.9	5.3			40	4.1	3.9			4	60.9	37.6
Aug 19		32	-1.8	2.0			39	0.2	1.4			1	-58.3	-1.3
Sep 19		34	9.1	4.3			41	8.9	4.3			2	31.6	-2.7
Oct 19		32	-16.0	-3.9			39	-15.7	-3.1			2	-38.8	-35.8
Nov 19		34	7.4	-1.0			41	7.5	-0.8			2	1.1	-10.4
Dec 19		32	-2.8	-4.6			38	-2.9	-4.5			2	-2.9	-16.4
Jan 20	(r)	34	7.5	3.9			41	7.7	4.0			3	25.8	10.1
Feb 20	(r)	32	-1.2	1.1			38	-1.2	1.1			2	9.5	12.8
Mar 20	(p)	31	-3.4	1.0			37	-2.5	1.3			2	-27.0	2.1

Services, SIC 2007 sections G-S (85%) ¹				Finance and business services, SIC 2007 sections K-N (21%) ²				Public sector excluding financial services (18%) ²						
		Weekly Earnings (£)	% changes year on year				% changes year on year				% changes year on year			
			Single month	3 month average ²			Single month	3 month average ²			Single month	3 month average ²		
		K5CS	K5CT	K5CU			K5CV	K5CW	K5CX			KAH3	KAH4	KAH5
Mar 18		33	3.9	2.2			76	-2.8	2.4			1	-25.0	-9.0
Jan 19	(r)	33	6.3	2.3			78	4.1	5.0			2	61.8	-18.3
Feb 19	(r)	33	5.4	4.1			78	4.2	1.8			2	28.5	19.4
Mar 19	(r)	33	-1.6	3.3			79	3.2	3.8			2	108.6	63.7
Apr 19		32	2.8	2.1 (r)			78	1.2	2.9 (r)			1	11.3	44.4 (r)
May 19		34	7.4	2.8 (r)			81	21.1	7.9 (r)			2	23.8	42.7 (r)
Jun 19		33	3.0	4.4			80	2.7	7.7			1	-20.0	5.4
Jul 19		34	4.0	4.8			81	-0.5	7.0			2	54.5	22.6
Aug 19		33	-2.0	1.6			80	1.1	1.1			1	-57.0	-12.1
Sep 19		35	9.7	3.8			86	11.6	4.0			1	25.4	-2.6
Oct 19		33	-18.3	-4.7			82	-12.3	-0.7			1	-37.8	-34.3
Nov 19		35	8.1	-1.6			85	2.7	-0.1			1	-0.5	-10.7
Dec 19		33	-3.2	-5.5			79	1.0	-3.3			1	5.9	-13.7
Jan 20	(r)	36	8.7	4.5			84	6.7	3.4			2	10.2	5.5
Feb 20	(r)	32	-2.4	1.0			77	-1.1	2.2			2	14.1	10.4
Mar 20	(p)	31	-3.8	0.9			76	-4.1	0.5			1	-30.9	-4.8

Manufacturing, SIC 2007 section C (8%) ²				Construction, SIC 2007 section F (5%) ¹				Wholesaling, retailing, hotels & restaurants, SIC 2007 sections G & I (23%) ²						
		Weekly Earnings (£)	% changes year on year				% changes year on year				% changes year on year			
			Single month	3 month average ²			Single month	3 month average ²			Single month	3 month average ²		
		K5D3	K5D4	K5D5			K5D6	K5D7	K5D8			K5D9	K5DA	K5DB
Mar 18		26	8.4	0.6			31	15.3	7.3			24	10.8	2.9
Jan 19	(r)	26	2.6	-3.8			25	-5.9	6.6			21	-3.8	-7.8
Feb 19	(r)	23	-9.5	-0.9			29	17.5	15.6			23	2.0	-1.7
Mar 19	(r)	24	-6.7	-4.6			32	2.3	4.2			19	-20.9	-7.9
Apr 19		27	3.2	-4.3 (r)			35	57.6	23.0 (r)			20	-11.2	-10.3 (r)
May 19		26	-3.7	-2.4 (r)			31	33.0	27.8 (r)			25	-13.5	-15.1 (r)
Jun 19		27	12.4	3.7			28	14.8	34.5			22	13.2	-5.4
Jul 19		25	-1.7	2.0			31	51.4	32.0			20	-4.5	-3.2
Aug 19		27	14.6	8.1			27	-21.4	8.4			22	2.1	3.4
Sep 19		24	-4.2	2.6			32	15.6	9.0			22	6.3	1.3
Oct 19		26	2.2	4.0			28	-12.0	-7.3			22	-13.2	-2.3
Nov 19		25	7.5	1.7			29	6.5	2.7			22	0.8	-2.6
Dec 19		25	-5.4	1.2			30	-0.5	-2.5			22	-2.1	-5.2
Jan 20	(r)	25	-4.0	-0.9			35	40.6	14.2			25	19.6	5.8
Feb 20	(r)	26	11.2	0.2			33	15.3	17.1			20	-11.3	1.5
Mar 20	(p)	26	5.6	4.0			29	-8.6	13.8			19	-1.9	1.8

Source: Monthly Wages & Salaries Survey

Earnings enquiries: 01633 456120

Email: earnings@ons.gov.uk

1. The figure in brackets is the percentage of whole economy employment in that sector or industry for the latest time period.

2. The three month average figures are the changes in the average seasonally adjusted values for the three months ending with the relevant month compared with the same period a year earlier.

EARNINGS

15 Average Weekly Earnings (nominal) - regular pay¹

Standard Industrial Classification (2007)

Great Britain, seasonally adjusted

Whole Economy (100%) ²				Private sector (82%) ²			Public sector (18%) ²		
	Weekly Earnings (£)	% changes year on year		Weekly Earnings (£)	% changes year on year		Weekly Earnings (£)	% changes year on year	
		Single month	3 month average ³		Single month	3 month average ³		Single month	3 month average ³
	KAI7	KAI8	KAI9	KAJ2	KAJ3	KAJ4	KAJ5	KAJ6	KAJ7
Mar 18	483	3.0	2.9	476	3.2	3.0	519	2.5	2.4
Jan 19 (r)	498	3.6	3.4	491	3.8	3.6	531	2.8	2.9
Feb 19 (r)	497	3.2	3.4	490	3.5	3.6	531	2.2	2.6
Mar 19 (r)	498	3.1	3.3	492	3.5	3.6	531	2.3	2.4
Apr 19	503	4.0	3.4	494	3.9	3.6	542	4.4	3.0
May 19	504	3.8	3.6	496	3.8	3.8 (r)	539	3.8	3.5
Jun 19	506	4.0	3.9	498	4.1	4.0	540	3.5	3.9
Jul 19	507	3.8	3.9	500	3.9	4.0	541	3.1	3.5
Aug 19	508	3.6	3.8	501	3.6	3.9	542	3.2	3.3
Sep 19	509	3.6	3.6	501	3.6	3.7	544	3.4	3.2
Oct 19	510	3.2	3.5	502	3.2	3.5	546	3.3	3.3
Nov 19	510	3.2	3.4	503	3.2	3.3	547	3.4	3.4
Dec 19	511	3.2	3.2	504	3.2	3.2	548	3.3	3.4
Jan 20	511	2.8	3.1	504	2.7	3.0	548 (r)	3.0	3.2
Feb 20 (r)	511	2.8	2.9	504	2.7	2.8	549	3.3	3.2
Mar 20 (p)	510	2.4	2.7	503	2.1	2.5	550	3.5	3.3
Services, SIC 2007 sections G-S (85%) ²				Finance and business services, SIC 2007 sections K-N (21%) ²			Public sector excluding financial services (18%) ²		
	Weekly Earnings (£)	% changes year on year		Weekly Earnings (£)	% changes year on year		Weekly Earnings (£)	% changes year on year	
		Single month	3 month average ³		Single month	3 month average ³		Single month	3 month average ³
	K5DL	K5DM	K5DN	K5DO	K5DP	K5DQ	KAK6	KAK7	KAK8
Mar 18	467	3.0	2.8	580	3.1	2.8	516	2.4	2.4
Jan 19 (r)	481	3.8	3.6	601	4.7	4.0	528	2.9	2.9
Feb 19 (r)	480	3.2	3.5	600	3.3	3.9	527	2.3	2.7
Mar 19	482	3.2	3.4	604	4.2 (r)	4.1	528	2.4	2.5
Apr 19	486	4.1	3.5	605	4.5	4.0	538	4.3	3.0
May 19	487	3.9	3.7	606	4.3	4.3	536	3.9	3.5
Jun 19	489	4.2	4.1	613	5.2	4.7	537	3.6	3.9
Jul 19	491	3.8	4.0	611	4.2	4.6	538	3.2	3.6
Aug 19	491	3.5	3.8	613	4.6	4.7	539	3.3	3.3
Sep 19	492	3.6	3.7	616	4.7	4.5	541	3.4	3.3
Oct 19	493	3.2	3.5	619	4.5	4.6	542	3.4	3.4
Nov 19	494	3.3	3.4	618	4.0	4.4	544	3.4	3.4
Dec 19	495	3.4	3.3	619	3.9	4.2	544	3.4	3.4
Jan 20	495	3.0	3.2	616 (r)	2.5	3.5	544	3.1	3.3
Feb 20 (r)	495	3.1	3.1	619	3.3	3.2	546	3.4	3.3
Mar 20 (p)	495	2.6	2.9	619	2.4	2.7	547	3.6	3.4
Manufacturing, SIC 2007 section C (8%) ²				Construction, SIC 2007 section F (5%) ²			Wholesaling, retailing, hotels & restaurants, SIC 2007 sections G & I (23%) ²		
	Weekly Earnings (£)	% changes year on year		Weekly Earnings (£)	% changes year on year		Weekly Earnings (£)	% changes year on year	
		Single month	3 month average ³		Single month	3 month average ³		Single month	3 month average ³
	K5DU	K5DV	K5DW	K5DX	K5DY	K5DZ	K5E2	K5E3	K5E4
Mar 18	572	2.6	2.7	585	6.0	4.6	327	2.4	2.4
Jan 19 (r)	584	2.3	1.9	603	3.9	4.2	335	3.0	3.1
Feb 19 (r)	585	2.2	2.0	606	4.8	4.2	334	2.5	2.9
Mar 19 (r)	585	2.3	2.3	605	3.4	4.0	334	2.2	2.6
Apr 19	586	2.4	2.3	616	5.2	4.5	337	3.0	2.6 (r)
May 19	587	2.7	2.4	620	5.2	4.6 (r)	339	3.0	2.7
Jun 19	588	2.3	2.5	621	5.2	5.2	341	3.4	3.1
Jul 19	589	2.4	2.5	621	5.7	5.4	342	3.3	3.2
Aug 19	593	3.0	2.6	623	5.6	5.5	343	2.7	3.1
Sep 19	593	2.5	2.7	622	5.4	5.6	343	3.5	3.1
Oct 19	595	2.7	2.8	621	5.1	5.4	339	1.4	2.5
Nov 19	597	2.9	2.7	620	3.3	4.6	340	1.6	2.2
Dec 19	596	2.8	2.8	618	2.0	3.5	340	1.4	1.5
Jan 20	594	1.7	2.4	619 (r)	2.7	2.7	344	2.9	2.0
Feb 20 (r)	596	1.9	2.1	618	2.1	2.3	342	2.3	2.2
Mar 20 (p)	591	1.0	1.5	614	1.5	2.1	339	1.3	2.2

Source: Monthly Wages & Salaries Survey

Earnings enquiries: 01633 456120

Email: earnings@ons.gov.uk

1. Estimates of regular pay exclude bonuses and arrears of pay.

2. The figure in brackets is the percentage of whole economy employment in that sector or industry for the latest time period.

3. The three month average figures are the changes in the average seasonally adjusted values for the three months ending with the relevant month compared with the same period a year earlier.

EARNINGS

16 Average Weekly Earnings - real and nominal¹

Great Britain whole economy, seasonally adjusted

Total pay (including bonuses) ¹						
	Nominal earnings			Real earnings ³		
	Nominal Weekly Earnings (£)	% changes year on year		Weekly Earnings at constant 2015 prices (£)	% changes year on year	
		Single month	3 month average ²		Single month	3 month average ²
	KAB9	KAC2	KAC3	A3WX	A3WV	A3WW
Mar 18	519	3.3	2.9	494	0.9	0.3
Jan 19	529	3.6 (r)	3.4	496	1.9	1.4
Feb 19 (r)	530	3.5	3.5	496	1.6	1.6
Mar 19 (r)	532	2.5	3.2	497	0.6	1.4
Apr 19	534	4.1	3.4	498	2.1	1.4
May 19	536	4.0	3.5	499	2.1	1.6 (r)
Jun 19	538	3.8	4.0	500	1.8	2.0
Jul 19	539	3.9	3.9	501	1.9	1.9
Aug 19	540	3.3	3.7	501	1.6	1.8
Sep 19	542	3.8	3.7	502	2.1	1.9
Oct 19	543	2.4	3.2	502	1.0	1.5
Nov 19	544	3.4	3.2	503	1.8	1.6
Dec 19	544	2.8	2.9	502	1.4	1.4
Jan 20 (r)	546	3.1	3.1	502	1.3	1.5
Feb 20	544 (r)	2.5	2.8	501	0.8	1.2
Mar 20 (p)	540	1.5	2.4	497	0.0	0.7
Regular pay (excluding bonuses)						
	Nominal earnings			Real earnings ³		
	Nominal Weekly Earnings (£)	% changes year on year		Weekly Earnings at constant 2015 prices (£)	% changes year on year	
		Single month	3 month average ²		Single month	3 month average ²
	KAI7	KAI8	KAI9	A2FC	A2F9	A2FA
Mar 18	483	3.0	2.9	460	0.7	0.4
Jan 19	498	3.6	3.4 (r)	467	1.9	1.5
Feb 19 (r)	497	3.2	3.4	466	1.4	1.5
Mar 19	498	3.1	3.3	466	1.3 (r)	1.5
Apr 19	503	4.0	3.4	468	2.0	1.6 (r)
May 19	504	3.8	3.6	469	1.9	1.7
Jun 19	506	4.0	3.9	470	2.1	2.0
Jul 19	507	3.8	3.9	470	1.8	1.9
Aug 19	508	3.6	3.8	471	1.8	1.9
Sep 19	509	3.6	3.6	471	1.9	1.8
Oct 19	510	3.2	3.5	472	1.6	1.8
Nov 19	510	3.2	3.4	472	1.8	1.8
Dec 19	511	3.2	3.2	473	1.8	1.7
Jan 20	511	2.8	3.1	472	1.0	1.5
Feb 20	511	2.8	2.9	471	1.2 (r)	1.3
Mar 20 (p)	510	2.4	2.7	471	0.9	1.0

Source: Monthly Wages & Salaries Survey

Earnings enquiries: 01633 456120

Email: earnings@ons.gov.uk

1. Estimates of total pay include bonuses but exclude arrears of pay.

2. The three month average figures are the changes in the average seasonally adjusted values for the three months ending with the relevant month compared with the same period a year earlier.

3. Estimates of real earnings are calculated by deflating the nominal earnings estimates by the Consumer Prices Index including owner occupiers' housing costs (CPIH), our preferred measure of consumer price inflation.

17 International comparisons of employment and unemployment

Employment rates as published by EUROSTAT: (not seasonally adjusted)					Unemployment rates as published by EUROSTAT on 30 April 2020 (seasonally adjusted)					
	Latest period		Employment rate (%) ^{1,2}	Change on year %		Latest Period	Unemployment rate (%) ³	Change on month %	Change on year %	
United Kingdom (*)	ANZ6	Oct-Dec 19	75.6	0.6	United Kingdom (*)	ZXDW	Jan 19	3.8	0.1	0.0
European Union (EU)					European Union (EU)					
Austria	YXSN	Oct-Dec 19	73.8	0.5	Austria	ZXDS	Mar 20	4.5	0.0	-0.2
Belgium	YXSO	Oct-Dec 19	65.3	0.1	Belgium	ZXDI	Mar 20	5.3	0.1	-0.2
Bulgaria	A495	Oct-Dec 19	70.0	2.3	Bulgaria	A492	Mar 20	4.5	0.5	0.0
Croatia	GUMI	Oct-Dec 19	62.2	1.6	Croatia	GUMJ	Mar 20	6.8	0.6	-0.2
Cyprus	A4AC	Oct-Dec 19	71.0	1.8	Cyprus	A4AN	Mar 20	8.4	2.6	0.8
Czech Republic	A4AD	Oct-Dec 19	75.3	-0.1	Czech Republic	A4AO	Mar 20	2.0	0.1	-0.1
Denmark	YXSP	Oct-Dec 19	75.4	1.1	Denmark	ZXDJ	Mar 20	4.8	0.0	-0.5
Estonia	A4AE	Oct-Dec 19	76.1	0.3	Estonia	A4AP	Feb 20	4.7	0.0	0.3
Finland	YXSQ	Oct-Dec 19	72.7	0.6	Finland	ZXDU	Mar 20	6.5	0.0	-0.2
France	YXSR	Oct-Dec 19	65.9	0.5	France	ZXDN	Mar 20	8.4	0.5	-0.2
Germany	YXSS	Oct-Dec 19	77.0	0.5	Germany	ZXDK	Mar 20	3.5	0.1	0.3
Greece	YXST	Oct-Dec 19	56.5	1.4	Greece	ZXDL	Feb 20	16.1	-0.1	-2.3
Hungary	A4AF	Oct-Dec 19	70.3	0.8	Hungary	A4AQ	Mar 20	6.5	2.9	3.1
Ireland	YXSU	Oct-Dec 19	70.2	1.1	Ireland	ZXDO	Apr 20	5.4	0.1	0.2
Italy	YXSV	Oct-Dec 19	59.2	0.7	Italy	ZXDP	Mar 20	6.8	-2.5	-3.6
Latvia	A4AG	Oct-Dec 19	72.7	0.9	Latvia	A4AR	Mar 20	6.7	0.2	0.3
Lithuania	A4AH	Oct-Dec 19	73.2	0.3	Lithuania	A4AS	Mar 20	6.9	0.3	0.9
Luxembourg	YXSW	Oct-Dec 19	67.9	-0.2	Luxembourg	ZXDQ	Mar 20	7.1	1.4	1.5
Malta	A4AI	Oct-Dec 19	74.1	1.3	Malta	A4AT	Feb 20	3.4	0.0	-0.3
Netherlands	YXSX	Oct-Dec 19	78.4	0.5	Netherlands	ZXDR	Mar 20	2.9	0.0	-0.4
Poland	A4AJ	Oct-Dec 19	68.5	1.2	Poland	A4AU	Mar 20	3.0	0.0	-0.6
Portugal	YXSY	Oct-Dec 19	70.6	0.7	Portugal	ZXDT	Feb 20	6.4	-0.4	-0.1
Romania	A494	Oct-Dec 19	66.0	1.5	Romania	A48Z	Mar 20	4.6	0.7	0.9
Slovak Republic	A4AK	Oct-Dec 19	68.5	0.3	Slovak Republic	A4AV	Mar 20	5.6	0.1	-0.2
Slovenia	A4AL	Oct-Dec 19	71.6	-0.2	Slovenia	A4AW	Mar 20	3.8	0.2	-0.6
Spain	YXSZ	Oct-Dec 19	63.7	0.7	Spain	ZXDM	Mar 20	14.5	0.9	0.3
Sweden	YXTA	Oct-Dec 19	76.7	-0.3	Sweden ⁵	ZXDV	Mar 20	6.7	-0.8	-0.6
Total EU ⁴	A496	Oct-Dec 19	68.6	0.7	Total EU ⁴	A493	Mar 20	6.6	0.1	-0.3
Eurozone ⁴	YXTC	Oct-Dec 19	68.3	0.7	Eurozone ⁴	ZXDH	Mar 20	7.4	0.1	-0.3
Employment rates published by the OECD (seasonally adjusted)					Unemployment rates as published by national statistical offices (seasonally adjusted)					
Canada	A48O	Jan-Mar 20	73.2	1.0	Canada	ZXDZ	Apr 20	13.0	5.2	7.3
Japan	A48P	Jan-Mar 20	78.0	-0.1	Japan	ZXDY	Mar 20	2.5	0.1	0.0
United States	A48Q	Jan-Mar 20	71.4	0.3	United States	ZXDX	Apr 20	14.7	10.3	11.1

Sources: EUROSTAT, OECD, national statistical offices.
Labour market statistics enquiries: labour.market@ons.gov.uk

(*) Note: The UK rates shown in this table are as published by EUROSTAT (the EUs statistical office). See Table 1 for the latest rates for the UK as published by ONS.

Caution should be taken with international comparisons of labour markets during the COVID-19 pandemic, since definitional definitions of economic measures, such as furloughing, will vary between countries.

- All employment rates shown in this table are for those aged from 15 to 64 except for the rate for the United States published by OECD which are for those aged from 16 to 64.
- The employment rates for the EU are published by EUROSTAT and are not seasonally adjusted. EUROSTAT do not publish seasonally adjusted (SA) employment rates but SA rates for some EU countries are published by OECD. These OECD employment rates are available on our website at [dataset A10](#).
- Unemployment rates published by EUROSTAT for most EU countries (but not for the UK), are calculated by extrapolating from the most recent LFS data using monthly registered unemployment data. A standard population basis (15-74) is used by EUROSTAT except for Spain, Italy and the UK (16-74). The unemployment rate for the US is based on those aged 16 and over, but the rates for Canada and Japan are for those aged 15 and over. All unemployment rates shown in this table are seasonally adjusted.
- The "Total EU" series consist of all 27 EU countries. The Eurozone figures consist of the following EU countries: Austria, Belgium, Cyprus, Estonia, Finland, France, Germany, Greece, Ireland, Italy, Latvia, Lithuania, Luxembourg, Malta, Netherlands, Portugal, Slovak Republic, Slovenia and Spain.
- The EU unemployment rates are as published on the EUROSTAT database. For Sweden the rates on the database differ from those shown in the EUROSTAT News Release published on 30 April 2020. This is because the figures for Sweden on the database are seasonally adjusted estimates but the figures for Sweden shown in the News Release are the trend component.

18 Labour disputes (first published 17 March 2020)

United Kingdom, not seasonally adjusted

	Working days lost (thousands) ^{1,2}	Working days lost in the Public Sector (thousands) ^{1,2}	Working days lost in the Private Sector (thousands) ^{1,2}	Number of stoppages ³	Number of stoppages in the Public Sector	Number of stoppages in the Private Sector	Workers involved (thousands) ^{1,3}
	1	2	3	4	5	6	7
	BBFW	F8XZ	F8Y2	BLUU	F8Y3	F8Y4	BLUT
2018 January	9	1	8	18	4	14	3
2019 January	11	1	11	10	2	8	6
February	7	2	5	11	5	6	6
March	9	1	8	14	6	8	5
April	2	1	2	8	1	7	1
May	10	1	10	14	2	12	5
June	12	1	12	24	5	19	3
July	11	4	7	24	9	15	7
August	7	1	6	10	2	8	2
September	9	1	8	14	3	11	3
October	8	1	7	13	5	8	2
November	84	14	69	13	4	9	21
December (r)	64	7	57	12	7	5	19
2020 January (p)	18	17	1	7	5	2	7
Cumulative totals 12 months to:							
Jan 19	275	26	249	82	23	59	44
Jan 20 (p)	242	50	192	99	34	65	43

Relationship between columns 1=2+3; 4=5+6

Data source: ONS Labour Disputes Survey
Labour disputes enquiries 01633 455400

- Estimates of working days lost and workers involved are shown to the nearest thousand. Unrounded estimates of less than 500 therefore round to zero.
- Due to rounding the working days lost for the public and private sectors may not add up to the total working days lost.
- The latest 12 month cumulative totals for the figures in these columns will not necessarily equal the sum of the 12 months as some disputes continue for over one month. These disputes appear in each month's data, but only once in the total.

VACANCIES

19 Vacancies¹ by size of business

United Kingdom (thousands), seasonally adjusted

		Number of employees					
		All Vacancies	1-9	10-49	50-249	250-2499	2500+
		AP2Y	ALY5	ALY6	ALY7	ALY8	ALY9
Levels							
Feb-Apr 2018		816	123	116	120	164	294
Feb-Apr 2019	(r)	847	126	122	115	190	295
Mar-May 2019		841	131	120	111	187	292
Apr-Jun 2019		831	118	121	114	185	293
May-Jul 2019		824	114	121	112	185	291
Jun-Aug 2019		818	112	121	111	184	290
Jul-Sept 2019		820	121	122	105	182	290
Aug-Oct 2019		803	113	119	102	178	290
Sept-Nov 2019		797	110	118	101	178	291
Oct-Dec 2019		801	110	119	103	180	290
Nov-Jan 2020	(r)	807	112	121	108	176	290
Dec-Feb 2020	(r)	817	117	121	113	171	296
Jan-Mar 2020	(r)	794	110	110	109	167	298
Feb-Apr 2020	(p)	637	80	78	88	135	257
Change on quarter	*	-170	-32	-43	-20	-42	-33
Change %	*	-21.0	-28.6	-35.6	-18.5	-23.5	-11.5
Change on year		-210	-46	-44	-27	-55	-38
Change %		-24.8	-36.3	-36.1	-23.3	-29.1	-13.0

1. Excludes Agriculture, Forestry and Fishing.

Source: ONS Vacancy Survey

Vacancy Survey enquiries: vacancy.survey@ons.gov.uk, 01633 456777

* Change on previous non-overlapping three month rolling average time period.

20 Vacancies¹ and Unemployment

United Kingdom (thousands), seasonally adjusted

		All Vacancies ¹	Unemployment ²	Number of unemployed people per vacancy
		AP2Y	MGSC	JPC5
Levels				
Jan-Mar 2018		817	1,417	1.7
Jan-Mar 2019		847	1,298	1.5
Apr-Jun 2019		831	1,329	1.6
Jul-Sep 2019		820	1,306	1.6
Oct-Dec 2019		801	1,290	1.6
Jan-Mar 2020	(r)	794	1,348	1.7
Change on quarter		-8	58	0.1
Change %		-1.0	4.5	
Change on year		-54	50	0.2
Change %		-6.3	3.8	

Source: ONS Vacancy Survey/ Labour Force Survey

Vacancy Survey enquiries: vacancy.survey@ons.gov.uk, 01633 456777

1. Excludes Agriculture, Forestry and Fishing.

2. Unemployment estimates are produced from the Labour Force Survey (LFS) and are always one period behind the ONS Vacancy Survey estimates. This table therefore shows estimates for the same periods as shown in table 1 (which shows LFS estimates).

VACANCIES

21 Vacancies by industry

Standard Industrial Classification (2007)

United Kingdom (thousands), seasonally adjusted

SIC 2007 sections	All vacancies ¹	Mining & quarrying	Manufacturing	Electricity, gas, steam & air conditioning supply ²	Water supply, sewerage, waste & remediation activities	Construction	Wholesale & retail trade; repair of motor vehicles and motor cycles	Transport & storage	Accommodation & food service activities	Information & communication
	B-S	B	C	D	E	F	G	H	I	J
	AP2Y	JP9H	JP9I	JP9J	JP9K	JP9L	JP9M	JP9N	JP9O	JP9P
Levels (thousands)										
Feb-Apr 2018	816	1	61	3	5	23	132	41	88	46
Feb-Apr 2019 (r)	847	2	57	4	4	27	137	41	95	47
Mar-May 2019	841	2	57	4	4	27	135	41	98	46
Apr-Jun 2019	831	2	56	4	4	27	135	41	93	44
May-Jul 2019	824	2	54	3	4	25	135	38	93	42
Jun-Aug 2019	818	2	54	3	4	24	128	35	95	42
Jul-Sept 2019	820	2	52	3	3	25	131	33	97	44
Aug-Oct 2019	803	2	51	3	3	24	128	32	92	43
Sept-Nov 2019	797	1	50	3	4	26	131	33	88	41
Oct-Dec 2019	801	2	52	3	4	26	130	35	86	40
Nov-Jan 2020 (r)	807	2	55	3	4	26	129	36	87	42
Dec-Feb 2020 (r)	817	2	56	3	3	28	133	35	90	43
Jan-Mar 2020 (r)	794	2	52	3	4	27	129	35	86	42
Feb-Apr 2020 (p)	637	1	42	3	4	21	99	28	56	31
Change on quarter *	-170	0	-13	0	0	-6	-31	-8	-32	-11
Change % *	-21.0	-12.5	-24.1	0.0	-2.8	-22.1	-23.6	-22.8	-36.4	-26.7
Change on year	-210	0	-15	-1	0	-7	-39	-13	-39	-16
Change %	-24.8	-6.7	-26.8	-16.7	-10.3	-24.9	-28.2	-32.2	-41.5	-34.5
	AP2Z	JPA2	JPA3	JPA4	JPA5	JPA6	JPA7	JPA8	JPA9	JPB2
Vacancies per 100 employee jobs										
Feb-Apr 2018	2.7	2.0	2.5	2.3	2.1	1.6	2.8	2.8	3.8	3.6
Feb-Apr 2019 (r)	2.8	2.9	2.3	2.6	1.7	1.9	3.0	2.7	4.1	3.5
Mar-May 2019	2.7	3.1	2.3	2.6	1.7	1.9	2.9	2.7	4.2	3.5
Apr-Jun 2019	2.7	2.9	2.2	2.7	1.9	1.8	2.9	2.7	4.0	3.3
May-Jul 2019	2.7	2.9	2.1	2.5	1.9	1.7	2.9	2.5	4.0	3.2
Jun-Aug 2019	2.7	3.1	2.2	2.4	1.7	1.6	2.8	2.3	4.1	3.2
Jul-Sept 2019	2.7	3.1	2.1	2.2	1.4	1.7	2.8	2.2	4.1	3.3
Aug-Oct 2019	2.6	2.9	2.0	2.3	1.5	1.7	2.8	2.1	3.9	3.2
Sept-Nov 2019	2.6	2.7	2.0	2.3	1.6	1.8	2.8	2.2	3.8	3.1
Oct-Dec 2019	2.6	2.9	2.1	2.3	1.6	1.8	2.8	2.3	3.7	3.0
Nov-Jan 2020 (r)	2.6	3.1	2.2	2.2	1.6	1.8	2.8	2.4	3.7	3.2
Dec-Feb 2020 (r)	2.7	2.9	2.2	2.3	1.4	1.9	2.9	2.4	3.9	3.2
Jan-Mar 2020 (r)	2.6	2.9	2.1	2.4	1.6	1.8	2.8	2.3	3.7	3.1
Feb-Apr 2020 (p)	2.1	2.7	1.7	2.2	1.5	1.4	2.1	1.9	2.4	2.3
Change on quarter *	-0.6	-0.4	-0.5	0.0	0.0	-0.4	-0.7	-0.5	-1.4	-0.8
Change on year	-0.7	-0.2	-0.6	-0.4	-0.2	-0.5	-0.8	-0.9	-1.7	-1.2

SIC 2007 sections	Financial & insurance activities	Real estate activities ²	Professional scientific & technical activities	Administrative & support service activities	Public admin & defence; compulsory social security	Education	Human health & social work activities	Arts, entertainment & recreation	Other service activities	Total services
	K	L	M	N	O	P	Q	R	S	G-S
	JP9Q	JP9R	JP9S	JP9T	JP9U	JP9V	JP9W	JP9X	JP9Y	JP9Z
Levels (thousands)										
Feb-Apr 2018	40	10	76	53	20	47	127	22	22	723
Feb-Apr 2019 (r)	35	12	81	51	22	52	136	22	22	753
Mar-May 2019	34	11	80	49	22	52	138	21	21	749
Apr-Jun 2019	34	12	79	50	23	53	138	20	20	739
May-Jul 2019	34	11	80	48	22	52	139	23	19	736
Jun-Aug 2019	33	11	80	52	23	51	139	23	19	731
Jul-Sept 2019	32	10	84	54	22	49	139	20	20	734
Aug-Oct 2019	31	12	83	54	23	48	138	17	19	720
Sept-Nov 2019	31	11	79	52	23	51	138	16	19	714
Oct-Dec 2019	32	12	77	55	24	51	138	18	19	716
Nov-Jan 2020 (r)	31	11	75	53	22	53	137	22	19	717
Dec-Feb 2020 (r)	31	13	77	54	22	51	137	22	18	726
Jan-Mar 2020 (r)	29	14	73	51	22	50	136	23	17	706
Feb-Apr 2020 (p)	26	12	57	41	21	41	126	15	14	566
Change on quarter *	-5	1	-18	-12	-1	-11	-11	-6	-4	-151
Change % *	-16.6	7.0	-24.4	-23.0	-3.7	-21.6	-8.2	-29.3	-23.1	-21.1
Change on year	-8	0	-24	-10	-1	-11	-11	-7	-8	-187
Change %	-24.3	-0.8	-29.3	-20.4	-2.3	-21.0	-7.7	-30.9	-35.3	-24.8
	JPB3	JPB4	JPB5	JPB6	JPB7	JPB8	JPB9	JPC2	JPC3	JPC4
Vacancies per 100 employee jobs										
Feb-Apr 2018	3.8	1.9	2.9	2.0	1.5	1.8	3.2	2.9	3.6	2.8
Feb-Apr 2019 (r)	3.3	2.3	3.0	1.9	1.6	2.0	3.3	3.0	3.4	2.9
Mar-May 2019	3.2	2.1	3.0	1.8	1.7	1.9	3.4	2.9	3.2	2.9
Apr-Jun 2019	3.2	2.3	2.9	1.8	1.7	2.0	3.4	2.7	3.0	2.8
May-Jul 2019	3.2	2.1	3.0	1.8	1.7	2.0	3.4	3.1	2.9	2.8
Jun-Aug 2019	3.2	2.1	3.0	1.9	1.7	1.9	3.4	3.1	3.0	2.8
Jul-Sept 2019	3.0	1.9	3.1	2.0	1.7	1.9	3.4	2.7	3.1	2.8
Aug-Oct 2019	3.0	2.2	3.1	2.0	1.8	1.8	3.4	2.3	2.9	2.7
Sept-Nov 2019	2.9	2.1	2.9	2.0	1.8	1.9	3.4	2.2	2.9	2.7
Oct-Dec 2019	3.0	2.3	2.9	2.1	1.8	1.9	3.4	2.4	2.9	2.7
Nov-Jan 2020 (r)	3.0	2.1	2.8	2.0	1.6	2.0	3.4	2.9	2.9	2.7
Dec-Feb 2020 (r)	2.9	2.5	2.9	2.0	1.6	1.9	3.4	3.0	2.7	2.8
Jan-Mar 2020 (r)	2.8	2.6	2.7	1.9	1.7	1.9	3.3	3.0	2.6	2.7
Feb-Apr 2020 (p)	2.5	2.3	2.1	1.5	1.6	1.5	3.1	2.0	2.2	2.2
Change on quarter *	-0.5	0.2	-0.7	-0.5	-0.1	-0.4	-0.3	-0.8	-0.7	-0.6
Change on year	-0.8	0.0	-0.9	-0.4	0.0	-0.4	-0.3	-0.9	-1.2	-0.7

1. Excludes Agriculture, Forestry and Fishing.

2. Not seasonally adjusted. These series do not display seasonality. Therefore the unadjusted series is the best estimate of a 'seasonally adjusted' series.

* Change on previous non-overlapping three month rolling average time period.

Source: ONS Vacancy Survey

Vacancy Survey enquiries: vacancy.survey@ons.gov.uk, 01633 456777

REDUNDANCIES

22 Redundancies: level and rates¹

United Kingdom (seasonally adjusted)

	People (aged 16 and over)		Men (aged 16 and over)		Women (aged 16 and over)	
	Level (000s)	Rate ¹	Level (000s)	Rate ¹	Level (000s)	Rate ¹
	BEAO	BEIR	BEIU	BEIX	BEJA	BEJD
Jan-Mar 2018	95	3.5	55	4.0	41	3.0
Jan-Mar 2019	92	3.3	57	4.0	36	2.6
Apr-Jun 2019	104	3.8	59	4.2	45	3.3
Jul-Sep 2019	118	4.3	59	4.3	59	4.3
Oct-Dec 2019	109	3.9	63	4.6	45	3.3
Jan-Mar 2020	107	3.9	60	4.3	47	3.4
Change on quarter	-2	-0.1	-3	-0.2	1	0.1
Change %	-1.5		-4.6		2.8	
Change on year	15	0.5	4	0.3	11	0.8
Change %	16.1		6.9		30.6	

Data source: Labour Force Survey

Labour market statistics enquiries: labour.market@ons.gov.uk

1. The redundancy rate is the ratio of the redundancy level for the given quarter to the seasonally adjusted number of employees in the previous quarter, multiplied by 100.

REGIONAL SUMMARY

23(1) Regional summary of labour market headline indicators

Thousands, seasonally adjusted

Headline estimates for January to March 2020

Area Codes	Area Names	Economical ly active ¹		Employe nt		Unemploy ment		Economical ly inactive	
		Aged 16+ Level	Aged 16-64 Rate (%) ²	Aged 16+ Level	Aged 16-64 Rate (%) ²	Aged 16+ Level	Aged 16+ Rate (%) ³	Aged 16-64 Level	Aged 16-64 Rate (%) ²
K02000001	United Kingdom	34,492	79.8	33,144	76.6	1,348	3.9	8,353	20.2
K03000001	Great Britain	33,593	80.0	32,267	76.8	1,326	3.9	8,052	20.0
E92000001	England	29,285	80.4	28,120	77.1	1,165	4.0	6,849	19.6
E12000001	North East	1,296	77.1	1,226	72.9	70	5.4	375	22.9
E12000002	North West	3,707	79.5	3,559	76.2	148	4.0	924	20.5
E12000003	Yorkshire and The Humber	2,717	77.3	2,601	73.9	116	4.3	768	22.7
E12000004	East Midlands	2,483	81.3	2,390	78.2	94	3.8	552	18.7
E12000005	West Midlands	2,957	79.0	2,808	75.0	149	5.0	759	21.0
E12000006	East	3,246	81.1	3,127	78.0	120	3.7	714	18.9
E12000007	London	5,128	80.6	4,888	76.9	239	4.7	1,181	19.4
E12000008	South East	4,869	82.7	4,727	80.2	142	2.9	968	17.3
E12000009	South West	2,881	81.8	2,793	79.2	88	3.1	609	18.2
W92000004	Wales	1,530	76.8	1,481	74.3	49	3.2	443	23.2
S92000003	Scotland	2,779	77.9	2,666	74.7	113	4.1	760	22.1
N92000002	Northern Ireland	898	74.2	877	72.4	21	2.4	301	25.8

Change on quarter (change since October to December 2019)

Note: Changes on quarter at regional level are particularly subject to sampling variability and should be interpreted in the context of changes over several quarters rather than in isolation.

Area Codes	Area Names	Economical ly active ¹		Employe nt		Unemploy ment		Economical ly inactive	
		Aged 16+ Level	Aged 16-64 Rate (%) ²	Aged 16+ Level	Aged 16-64 Rate (%) ²	Aged 16+ Level	Aged 16+ Rate (%) ³	Aged 16-64 Level	Aged 16-64 Rate (%) ²
K02000001	United Kingdom	268	0.3	211	0.2	58	0.1	-125	-0.3
K03000001	Great Britain	268	0.3	210	0.2	58	0.1	-124	-0.3
E92000001	England	261	0.4	224	0.2	37	0.1	-117	-0.4
E12000001	North East	20	1.3	28	1.8	-8	-0.7	-22	-1.3
E12000002	North West	16	0.2	25	0.3	-9	-0.3	-9	-0.2
E12000003	Yorkshire and The Humber	28	0.5	32	0.6	-4	-0.2	-18	-0.5
E12000004	East Midlands	-9	-0.1	-13	-0.2	4	0.2	3	0.1
E12000005	West Midlands	-3	-0.1	-20	-0.5	17	0.6	3	0.1
E12000006	East	11	-0.1	-1	-0.6	12	0.4	6	0.1
E12000007	London	165	1.7	138	1.4	27	0.4	-103	-1.7
E12000008	South East	50	0.0	59	0.1	-9	-0.2	0	0.0
E12000009	South West	-16	-0.7	-23	-1.0	8	0.3	23	0.7
W92000004	Wales	4	0.1	0	-0.1	4	0.3	-2	-0.1
S92000003	Scotland	2	0.1	-14	-0.3	16	0.6	-5	-0.1
N92000002	Northern Ireland	1	0.0	1	0.0	0	0.0	0	0.0

Change on year (change since January to March 2019)

Area Codes	Area Names	Economical ly active ¹		Employe nt		Unemploy ment		Economical ly inactive	
		Aged 16+ Level	Aged 16-64 Rate (%) ²	Aged 16+ Level	Aged 16-64 Rate (%) ²	Aged 16+ Level	Aged 16+ Rate (%) ³	Aged 16-64 Level	Aged 16-64 Rate (%) ²
K02000001	United Kingdom	497	0.7	448	0.6	50	0.1	-256	-0.7
K03000001	Great Britain	484	0.7	431	0.6	54	0.1	-248	-0.7
E92000001	England	521	0.9	468	0.8	53	0.1	-294	-0.9
E12000001	North East	21	1.8	20	1.8	1	0.0	-30	-1.8
E12000002	North West	90	1.6	78	1.3	11	0.2	-73	-1.6
E12000003	Yorkshire and The Humber	-17	-0.9	-3	-0.5	-14	-0.5	31	0.9
E12000004	East Midlands	37	1.5	42	1.7	-5	-0.3	-44	-1.5
E12000005	West Midlands	30	1.0	30	1.1	0	-0.1	-35	-1.0
E12000006	East	21	-0.8	-5	-1.4	25	0.8	32	0.8
E12000007	London	230	2.3	204	1.9	25	0.3	-128	-2.3
E12000008	South East	110	0.9	119	1.1	-10	-0.3	-48	-0.9
E12000009	South West	0	0.0	-18	-0.5	19	0.6	0	0.0
W92000004	Wales	-44	-2.3	-21	-1.1	-22	-1.3	44	2.3
S92000003	Scotland	8	-0.1	-16	-0.8	23	0.8	2	0.1
N92000002	Northern Ireland	13	0.7	17	1.1	-4	-0.5	-9	-0.7

The Labour Force Survey is tabulated by region of residence.

1. Economically active = Employment plus Unemployment.

2. Denominator = all persons aged 16 to 64.

3. Denominator = total economically active

Source: Labour Force Survey
Labour market statistics enquiries: labour.market@ons.gov.uk

REGIONAL SUMMARY

23(2) Regional summary of Workforce Jobs

Thousands,
seasonally adjusted

Area Codes	Area Names	December 2019	Change on September 2019
K02000001	United Kingdom	35,832	67
K03000001	Great Britain	34,904	68
E92000001	England	30,615	63
E12000001	North East	1,211	-15
E12000002	North West	3,796	-53
E12000003	Yorkshire and The Humber	2,782	27
E12000004	East Midlands	2,448	-1
E12000005	West Midlands	2,941	-21
E12000006	East	3,269	40
E12000007	London	6,134	43
E12000008	South East	4,973	42
E12000009	South West	3,061	1
W92000004	Wales	1,467	-27
S92000003	Scotland	2,822	32
N92000002	Northern Ireland	921	0

Workforce jobs are mainly sourced from employer surveys and are tabulated by region of workplace.

HM Forces stationed abroad are included in the UK workforce jobs estimates but not in the regional estimates. The UK workforce jobs estimates therefore do not equal the sum of the regional estimates.